



University of HUDDERSFIELD

University of Huddersfield Repository

Hinchliffe, Peter

Student Works: Peter Hinchliffe

Original Citation

Hinchliffe, Peter (2010) Student Works: Peter Hinchliffe. In: Being There - Reflections on 20 years of the International course at the Huddersfield Department of Architecture. University of Huddersfield, Huddersfield, UK, pp. 50-51. ISBN 9781682180864

This version is available at <http://eprints.hud.ac.uk/id/eprint/9111/>

The University Repository is a digital collection of the research output of the University, available on Open Access. Copyright and Moral Rights for the items on this site are retained by the individual author and/or other copyright owners. Users may access full items free of charge; copies of full text items generally can be reproduced, displayed or performed and given to third parties in any format or medium for personal research or study, educational or not-for-profit purposes without prior permission or charge, provided:

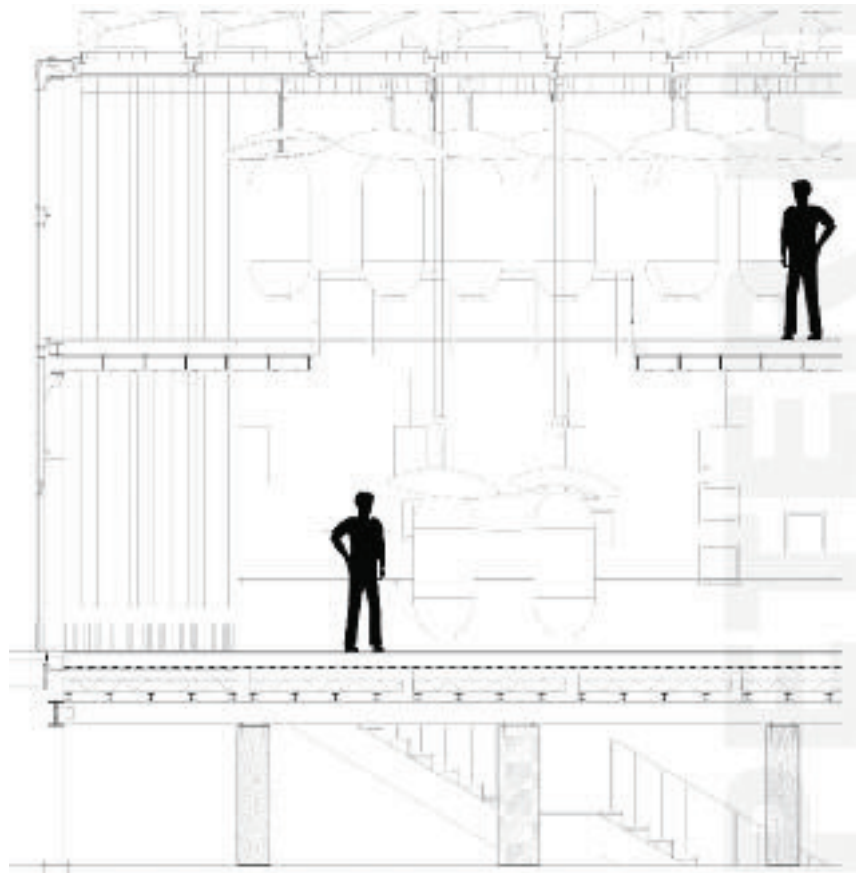
- The authors, title and full bibliographic details is credited in any copy;
- A hyperlink and/or URL is included for the original metadata page; and
- The content is not changed in any way.

For more information, including our policy and submission procedure, please contact the Repository Team at: E.mailbox@hud.ac.uk.

<http://eprints.hud.ac.uk/>

PETER HINCHCLIFFE





The site for this building sits on an axis of the more than two thousand year old city of Kunming in China, between an overcrowded pedestrian area and an underused large scale sunken square that was surrounded by some derelict 2-3 story buildings. The design solution not only investigates the ways that newly created spaces intervene with the existing space at various levels, but also creates new open public areas that support the access to existing small businesses at different levels, as an alternative to the adjacent large shopping malls. The design process explores the programme of information dissemination through a series of dynamic and sculptural components which are integral in defining the spatial choreography of the cultural centre.

