



# *University of* **HUDDERSFIELD**

## **University of Huddersfield Repository**

Barber, Claire

The Train Track and the Basket

### **Original Citation**

Barber, Claire (2017) The Train Track and the Basket. In: Making Futures V, 21-22 Sep 2017, Plymouth College of Art. (Unpublished)

This version is available at <https://eprints.hud.ac.uk/id/eprint/33525/>

The University Repository is a digital collection of the research output of the University, available on Open Access. Copyright and Moral Rights for the items on this site are retained by the individual author and/or other copyright owners. Users may access full items free of charge; copies of full text items generally can be reproduced, displayed or performed and given to third parties in any format or medium for personal research or study, educational or not-for-profit purposes without prior permission or charge, provided:

- The authors, title and full bibliographic details is credited in any copy;
- A hyperlink and/or URL is included for the original metadata page; and
- The content is not changed in any way.

For more information, including our policy and submission procedure, please contact the Repository Team at: [E.mailbox@hud.ac.uk](mailto:E.mailbox@hud.ac.uk).

<http://eprints.hud.ac.uk/>

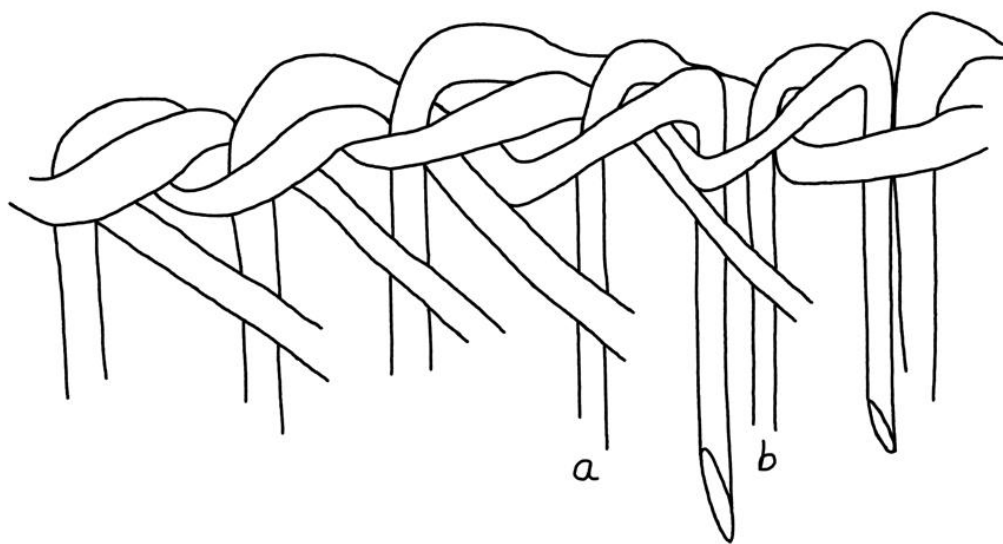
# The Train Track and the Basket

Dr Claire Barber  
University of Huddersfield, UK





Materials in and of the landscape



*Fig. 10*

Drawing of the Polish Border style of basket weaving



Immigrants arriving from Europe to Ellis Island circa 1900







Coates Willow and Basket Centre, Taunton, Somerset (left and centre images)





Coates Willow and Basket Centre, Taunton, Somerset (left and centre images)





Passengers on train to Gdansk, Poland.  
YIVO Institute for Jewish research (top image)



Coates Willow and Basket Centre, Taunton, Somerset (centre images)





Passengers on train to Gdansk, Poland.  
YIVO Institute for Jewish research.



Wicker reed suitcase that belonged to donor's mother who immigrated to US from Poland in 1915 (top image). Ellis Island National Museum of Immigration.

Wicker trunk that belonged to Hellen Paap, departed from Germany circa 1900 (bottom image). Ellis Island National Museum of Immigration.







Passengers on train to Gdansk, Poland.  
YIVO Institute for Jewish research (top image)



Wicker reed suitcase that belonged to donor's mother who immigrated to US from Poland in 1915 (top image). Ellis Island National Museum of Immigration.







Passengers on train to Gdansk, Poland.  
YIVO Institute for Jewish research (top image)



Wicker reed suitcase that belonged to donor's mother who immigrated to US from Poland in 1915 (top image). Ellis Island National Museum of Immigration.

Abraham Solomon 'Second Class—The Parting: "Thus part we rich in sorrow, parting poor"' 1855. Yale Center for British Art, Paul Mellon Collection







Passengers on train to Gdansk, Poland.  
YIVO Institute for Jewish research (top image)



Albert Bierstadt 'Donna Lake from the Summit' 1873. New York Historical Society (top image)



Abraham Solomon 'Second Class—The Parting: "Thus part we rich in sorrow, parting poor"' 1855.  
Yale Center for British Art, Paul Mellon Collection







Albert Bierstadt 'Donna Lake from the Summit' 1873. New York Historical Society (top image)

Abraham Solomon 'Second Class—The Parting: "Thus part we rich in sorrow, parting poor"' 1855. Yale Center for British Art, Paul Mellon Collection





'A Day for Stepping Lightly' Bardsey Island, 2001.



Albert Bierstadt 'Donna Lake from the Summit' 1873. New York Historical Society (top image)

Abraham Solomon 'Second Class—The Parting: "Thus part we rich in sorrow, parting poor"' 1855. Yale Center for British Art, Paul Mellon Collection



Materials distanced from the landscape





# SEARS, ROEBUCK AND CO.

CHEAPEST SUPPLY HOUSE

AUTHORIZED  
AND  
INCORPORATED  
UNDER THE LAWS  
OF  
ILLINOIS

ON EARTH  
OUR TRADE REACHES  
THE WORLD

WITH A CAPITAL

OF  
\$150,000.00

PAID IN FULL

REFERENCE BY SPECIAL PERMISSION

NATL BANK OF THE REPUBLIC CHICAGO  
METROPOLITAN NATL BANK  
NATL BANK OF ILLINOIS  
GERMAN EXCHANGE BANK NEW YORK

## CONSUMERS GUIDE



CATALOGUE  
No 104

82 to 96 FULTON

73 to 87 DESPLAINES

17 to 31 WAYMAN STREET

CHICAGO, ILL. U.S.A.







## Canvas Covered Trunks.



No. 21631 An Unquestionable Bargain. Square Trunk, with heavy iron bottom. Painted canvas covering, heavy iron straps, as well as neat in appearance. This trunk has hardwood slats on top and body, and is protected with heavy malleable iron clamps and corner protectors.

SIZE.	PRICE.
14 inch.....	\$0.65
16 inch.....	.75
18 inch.....	.85



No. 21632 Sole leather straps, canvas covered, heavy japanned steel clamps and corners. We have here an article to meet the demand of a cheap 3 strap trunk, large box covered with heavy canvas, painted, wide iron bound, heavy hardwood slats full length of trunk, body and end slats, heavy bumpers and steel clamps, rollers, etc., and braced Excelsior lock, with heavy bolts, iron bound, all protected with two heavy sole leather straps, high set-up tray with hat box, and side compartments all separately covered and cloth faced, extra dress tray.

SIZE.	PRICE.
28 inch.....	\$2.50
30 inch.....	6.00
32 inch.....	6.50

## Canvas Covered Stateroom Trunks

No. 21633 Iron center band, steel trimmings. Made to go under berth of any stateroom. This is a very convenient trunk for short journeys; japanned iron trimmings; bumpers, clamps, and corner shoes; large flat steel key, lock, side pockets, and set up tray.

SIZE.	PRICE.
28 inch.....	\$3.00
30 inch.....	3.25
32 inch.....	3.50



No. 21635 Leather bound brass excelsior lock steel trimmings, covered tray. Cheapest leather bound trunk made, canvas duck covered, edges bound with heavy leather, and leather center band, best steel bumpers, clamps, corner shoes, valance clamps, hinges, etc., excelsior lock, full covered tray, lined lined throughout.

SIZE.	PRICE.
30 inch.....	\$0.75
32 inch.....	1.00
34 inch.....	1.25

## 5¢ DOLLARS WORKS WONDERS IN OUR DRESS GOODS DEPARTMENT.

Convince yourself of the truth of this assertion by sending for a sample of our famous 40 inch finest imported French silk finished Henrietta. Positively the best value ever offered in Henrietta. Price per yd., 69¢. For 8 yds. dress pattern, \$5.35. Write for sample of No. 22198.

OUR BOOK DEPARTMENT EMBRACES ALL THE BEST AND MOST POPULAR AUTHORS. YOU NEED NEVER BE AT A LOSS FOR GOOD READING EVEN THOUGH YOUR PURSE IS LIMITED.

## Toy Trunks.



No. 21636 Square top, good lock, handles, set up tray.

SIZE.	PRICE.
12 inch.....	\$0.40
14 inch.....	.50
16 inch.....	.60



No. 21637 Crystal Saratoga. Fancy metal cover, barrel top, fancy stripe, with clamps, bottom rollers, set up tray and covered hat box.

SIZE.	PRICE.
16 inch.....	\$1.00
18 inch.....	1.15
20 inch.....	1.35

## Traveling Bags.

No better selection of Club Bags, Satchels, Gladstones, etc., can be found anywhere than the assortment shown here. Our line comprises the best products of three leading factories, and we offer the goods with our guarantee that if they are not fully up to our representation, and if you do not think you have gotten your money's worth, and more, you can return goods to us and we will refund amount paid. Remember our special discount of 3% for full cash with order.



No. 21638 Alligator Cloth Club Bag, alligator finish, top push lock, cloth lined Chestnut.

SIZE.	PRICE.
10 inch.....	\$0.35
12 inch.....	.40
14 inch.....	.45
16 inch.....	.50
18 inch.....	.55
20 inch.....	.60
22 inch.....	.65



No. 21640 Club Bag, selected pebble leather, large nickel lock and side catches, leather handles with rings, cloth lined.

SIZE.	PRICE.
10 inch.....	\$0.60
12 inch.....	.70
14 inch.....	.80
16 inch.....	.90
18 inch.....	1.00
20 inch.....	1.10
22 inch.....	1.20



No. 21641 Fine Alligator Club Bag, made of selected goat skin, double flange frame, large nickel plated double hasp lock and side catches, English handle with ring attachments, lined lined.

SIZE.	PRICE.
10 inch.....	\$0.70
12 inch.....	.80
14 inch.....	.90
16 inch.....	1.00
18 inch.....	1.10
20 inch.....	1.20



No. 21642 Pebble and alligator finish, japanned frame, flat steel key lock and thinned iron trimmings, strong iron handle.

SIZE.	PRICE.
14 inch.....	\$0.35
16 inch.....	.40
18 inch.....	.45
20 inch.....	.50
22 inch.....	.55
24 inch.....	.60



No. 21643 Rubber Pellissier.

SIZE.	PRICE.
14 inch.....	\$0.60
16 inch.....	.75
18 inch.....	.85
20 inch.....	.95
22 inch.....	1.05
24 inch.....	1.15



No. 21644 Grain Leather Gladstone. One of the most serviceable and best grain leather bags in the market, made of fine selected full stock grain leather, heavy grain leather straps all around, double flange frame, nickel plated long flat key lock, with handle combined, heavy nickel side catches, lined lined.

SIZE.	PRICE.
14 inch.....	\$2.85
16 inch.....	3.10
18 inch.....	3.35
20 inch.....	3.60
22 inch.....	3.85
24 inch.....	4.10

## Alligator Rubber Gladstone.



No. 21643 Alligator finish, strong lock and catches, straps all around, lined lined. Chestnut.

SIZE.	PRICE.
14 inch.....	\$0.85
16 inch.....	.95
18 inch.....	1.05
20 inch.....	1.25
22 inch.....	1.35
24 inch.....	1.55



No. 21644 Made of heavy selected sheep skin, with heavy japanned frame, nickel lock and trimmings. English handle, cloth lined, a very cheap and durable bag.

SIZE.	PRICE.
12 inch.....	\$2.25
14 inch.....	2.50
16 inch.....	2.75
18 inch.....	3.00
20 inch.....	3.25
22 inch.....	3.50
24 inch.....	3.75



No. 21645 Best selected grain leather, leather covered frame, large nickel lock, with combination ring handle and top catches, full leather lined, inside pockets.

SIZE.	PRICE.
12 inch.....	\$3.75
14 inch.....	4.00
16 inch.....	4.25
18 inch.....	4.50
20 inch.....	4.75
22 inch.....	5.00
24 inch.....	5.25



No. 21646 Grain Leather Gladstone. One of the most serviceable and best grain leather bags in the market, made of fine selected full stock grain leather, heavy grain leather straps all around, double flange frame, nickel plated long flat key lock, with handle combined, heavy nickel side catches, lined lined.

SIZE.	PRICE.
14 inch.....	\$2.85
16 inch.....	3.10
18 inch.....	3.35
20 inch.....	3.60
22 inch.....	3.85
24 inch.....	4.10



No. 21647 Grain Leather Gladstone. This bag is made from the very best full stock grain leather, double strong frame, nickel corner protectors, large nickel lock, with combination handle, heavy English strap catches, grain leather straps, full leather lined.

SIZE.	PRICE.
14 inch.....	\$3.75
16 inch.....	4.12
18 inch.....	4.50
20 inch.....	\$4.88
22 inch.....	5.25
24 inch.....	5.62



No. 21647 Grain Leather Gladstone. This bag is made from the very best full stock grain leather, double strong frame, nickel corner protectors, large nickel lock, with combination handle, heavy English strap catches, grain leather straps, full leather lined.

SIZE.	PRICE.
14 inch.....	\$3.75
16 inch.....	4.12
18 inch.....	4.50
20 inch.....	\$4.88
22 inch.....	5.25
24 inch.....	5.62



No. 21650 Leather Gladstone. Very fine pebble leather, grain leather straps all around, double flange frame, large nickel flat key lock, heavy nickel catches, double stitched leather handle, heavy rings, lined lined.

SIZE.	PRICE.
14 inch.....	\$1.55
16 inch.....	1.75
18 inch.....	1.95
20 inch.....	\$2.45
22 inch.....	2.65
24 inch.....	2.85



No. 21652 Alligator Leather Gladstone. Made of selected goatskin leather, heavy double flange frame, nickel double hasp lock and side catches, heavy English handle, with ring attachment, cloth lined, portfolio. Tan and chestnut.

SIZE.	PRICE.
14 inch.....	\$1.70
16 inch.....	1.90
18 inch.....	2.10
20 inch.....	\$2.30
22 inch.....	2.50
24 inch.....	2.70

## ...OUR MAMMOTH...

## DRESS &amp; GOODS DEPARTMENT

Makes a Special Offer This Season of a

## 46-IN. WATERPROOF FRENCH SERGE

In Black or Blue, at 45¢ Per Yard. Nothing like it ever before sold for less than 65 cents. Or, if you will send us \$3.50 we will send you a FULL DRESS PATTERN OF 8 YARDS of this famous serge. \$5.00 would be considered cheap for it by most dealers.

For Further Particulars See Quotations in Our Dress Goods Department.

## SEND FOR SAMPLES

NEVER WRITE ANYTHING ON YOUR ORDER BUT WHAT APPLIES TO THE ORDER ITSELF. IF YOU WISH TO KNOW ABOUT OTHER

## Canvas Gladstone.

Strong, Serviceable and Popular.



No. 21655 This is an exceptionally Fine Gladstone Bag. Made from extra heavy canvas with morocco leather corners, grain leather straps all around and large handsomely nickel-plated lock. Finely japanned frame and heavy stitched grain leather handle. Full lined lined. One of our specially good values.

SIZE.	PRICE.
14 inch.....	\$1.37
16 inch.....	1.50
18 inch.....	1.67
20 inch.....	\$1.90
22 inch.....	2.05
24 inch.....	2.25



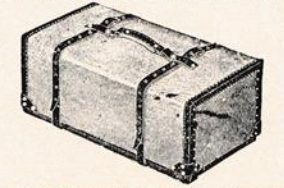
No. 21657 The Handsomest Bag ever Made. Famous Canvas Cabin Bag. Made from extra strong heavy weight canvas. Opens at top with spring clasp.

SIZE.	PRICE.
14 in., price.....	\$0.74
16 in., price.....	.85
18 in., price.....	.98
20 in., price.....	1.05
22 in., price.....	1.15
24 in., price.....	1.25



No. 21658 Riveted leather corner and bottom tips, heavy stitched handle; two straps.

SIZE.	PRICE.
14 inch.....	\$0.55
16 inch.....	0.45
18 inch.....	0.55
20 inch.....	\$0.65
22 inch.....	0.75
24 inch.....	0.85



No. 21659 Heavy canvas, leather bound, hand sewed, heavy leather tips, grain leather straps all around.

SIZE.	PRICE.
16 inch.....	\$1.10
18 inch.....	1.25
20 inch.....	1.40
22 inch.....	1.50
24 inch.....	1.65



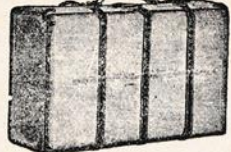
No. 21660 Extra Heavy Canvas: edges bound all around with wide leather; very heavy corner protectors; two and three sole leather straps; best handle made.

SIZE.	PRICE.
16 in., each.....	\$2.00
18 in., each.....	2.50
20 in., each.....	\$2.85
22 in., each.....	3.00
24 in., each.....	3.25

## YOU CAN NOT AFFORD TO PAY TWO PRICES WHEN ONE PRICE WILL DO...

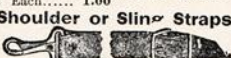
BUT WHAT APPLIES TO THE ORDER ITSELF. IF YOU WISH TO KNOW ABOUT OTHER

## Dress Suit Case.



No. 21662 Dress Suit Case. Plain Canvas, telescope style, heavy collar, leather straps and handles.

SIZE.	PRICE.
20 inch.....	\$0.40
22 inch.....	1.00
24 inch.....	\$1.10



No. 21663 Solid Grain Leather Shoulder or Sling Straps, for use on club bags, 1/2 inch wide with spring snaps. Price each.....



No. 21665 Grain leather, spring snaps, 1/2 inch. Each.....



No. 21667 Good Solid Shawl Straps with heavy stitched handles and rings with 2 straps 2 feet long. Price, each.....



No. 21669 This is something Entirely New, and it is certainly the best thing in lunch boxes ever produced. These boxes are made from a specially prepared fibre. Leather corners and thoroughly water-proof. They are very strong and tough, and will stand the very hardest kind of service. Each box has neat attached leather strap and handle. Made in three sizes, as follows:

SIZE.	PRICE.
Size, 4 1/2 x 6 1/2 in. deep.	\$0.15
Size, 6 1/2 x 7 1/2 in. deep.	0.30
Size, 6 3/4 x 4 1/2 in. deep.	0.25

Size, 6 3/4 x 4 1/2 in. deep. Price, each.....

## A SAMPLE OF OUR BOOK BARGAINS.

..\$19.95..

FOR A COMPLETE SET OF

Encyclopedia

Britannica.

BEAUTIFUL CLOTH BOUND BOOKS

...AT...

18 Cts., 22 Cts. and 25 Cts. a Volume.

Pages 346 to 349.

IF YOU WISH TO KNOW ABOUT OTHER

...AT...

18 Cts., 22 Cts. and 25 Cts. a Volume.

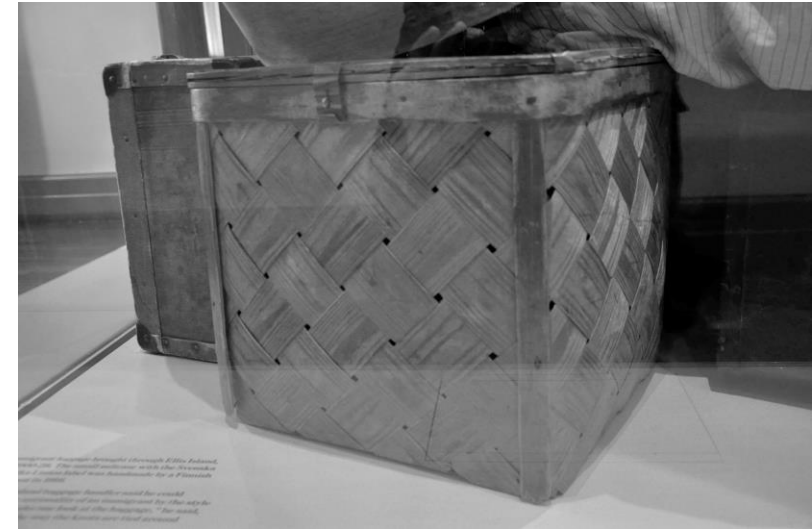
Pages 346 to 349.

IF YOU WISH TO KNOW ABOUT OTHER

...AT...

18 Cts., 22 Cts. and 25 Cts. a Volume.





Basket that belonged to the donors mother Augusta Bronstrom who immigrated to the US from Sweden in 1907. She brought food in the basket. Ellis Island National Museum of Immigration.





Wicker reed suitcase that belonged to the donors mother who immigrated to the US from Poland in 19015. Ellis Island National Museum of Immigration.





Sewing machine, Christine and Mortina Pettersen, Norway.  
Wood plane and grooving plane, Karl Steitz, Germany, 1919.  
Ellis Island National Museum of Immigration.







Loom N<sup>o</sup> 1  
Cloth N<sup>o</sup> .....  
Pattern N<sup>o</sup> 1  
Designed by .....  
BELOWDA DODSON  
Woven by .....  
Date MAY 1946.

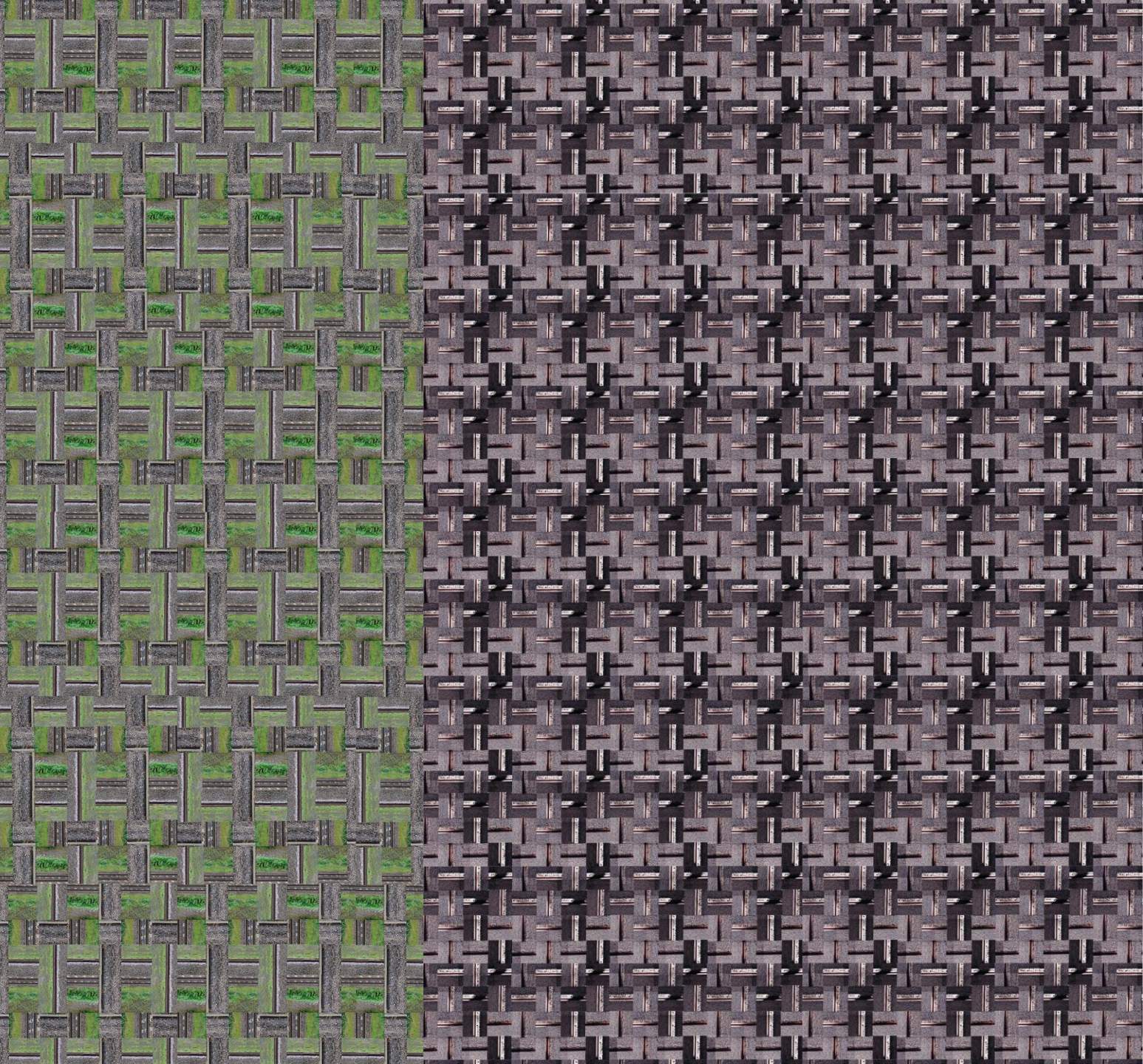
A blank sheet of graph paper with a grid pattern. The grid consists of small squares formed by thin black lines. There are also thicker black lines forming a larger grid, dividing the page into four equal quadrants. The paper is otherwise empty of any markings or text.

DESIGN REPEAT ON 192 384 BOOKS = 2 REPEATS.

[illegible]

Remarks

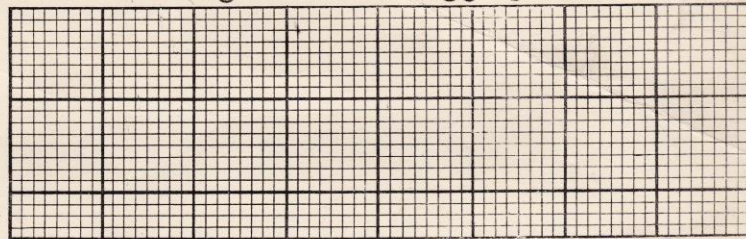
Signed by \_\_\_\_\_





# Design, Draft & Pegging Plans.

Loom No. 1  
 Cloth No.  
 Pattern No. 1  
 Designed by BELINDA DOBSON  
 Woven by  
 Date MAY 1986.



DESIGN REPEAT ON 192 384 PICKS = 2 REPEATS.

Counts	Kind	Blend No.	Shade	Warping	IN LOOM
2/36	COTTON	1	CAMEL	1	Beams.
2/36	COTTON	2	BLACK	1	1
2/36	COTTON	3	CAMEL	1	Ends.
2/36	COTTON	4	BLACK	1	2448
2/36	COTTON	5	CAMEL	1	60EPI
2/36	COTTON	6	BLACK	1	Length.
2/36	COTTON	7	CAMEL	1	Sign 10 YARDS
2/36	COTTON	8	BLACK	1	lbs.
2/36	COTTON	9	CAMEL	1	Reed.
2/36	COTTON	10	BLACK	1	Width.
2/36	COTTON	11	CAMEL	1	36"
2/36	COTTON	12	BLACK	1	Shuttles.
2/36	COTTON	13	CAMEL	1	Picks per Inch.
2/36	COTTON	14	BLACK	1	SQUARE SET.
2/36	COTTON	15	CAMEL	1	lbs.
2/36	COTTON	16	BLACK	1	FINISHED.
2/36	COTTON	17	CAMEL	1	Ends per Inch.
2/36	COTTON	18	BLACK	1	Picks per Inch.
2/36	COTTON	19	CAMEL	1	Length.
2/36	COTTON	20	BLACK	1	Width.
2/36	COTTON	21	CAMEL	1	lbs.
2/36	COTTON	22	BLACK	1	Ozs. per Yard.
2/36	COTTON	23	CAMEL	1	Finish.

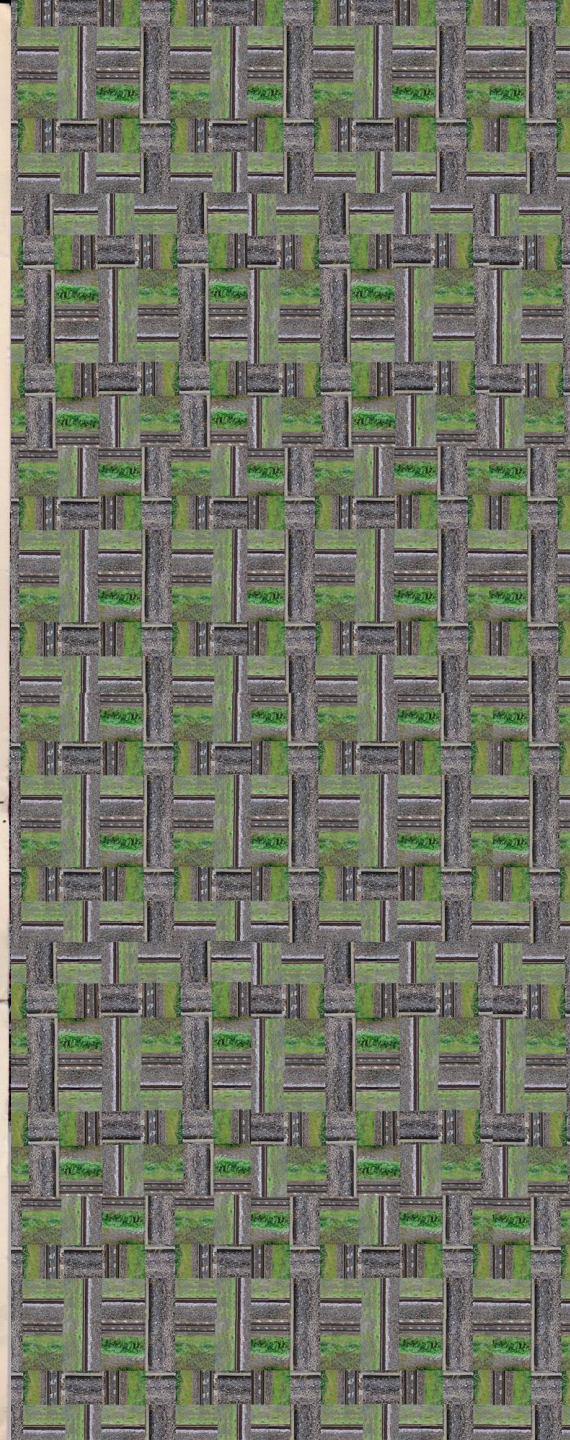
WARP 10 yds

WEAVE 4 yds of each 3/4

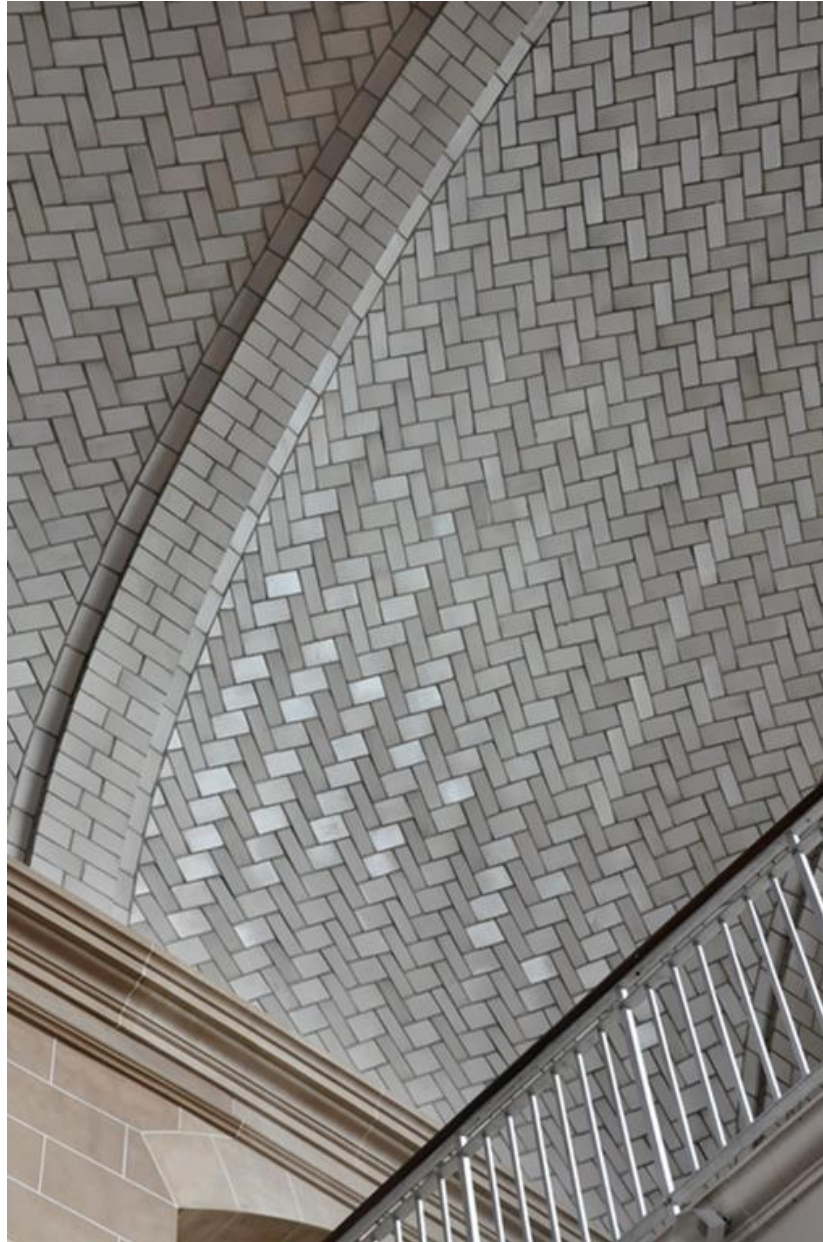
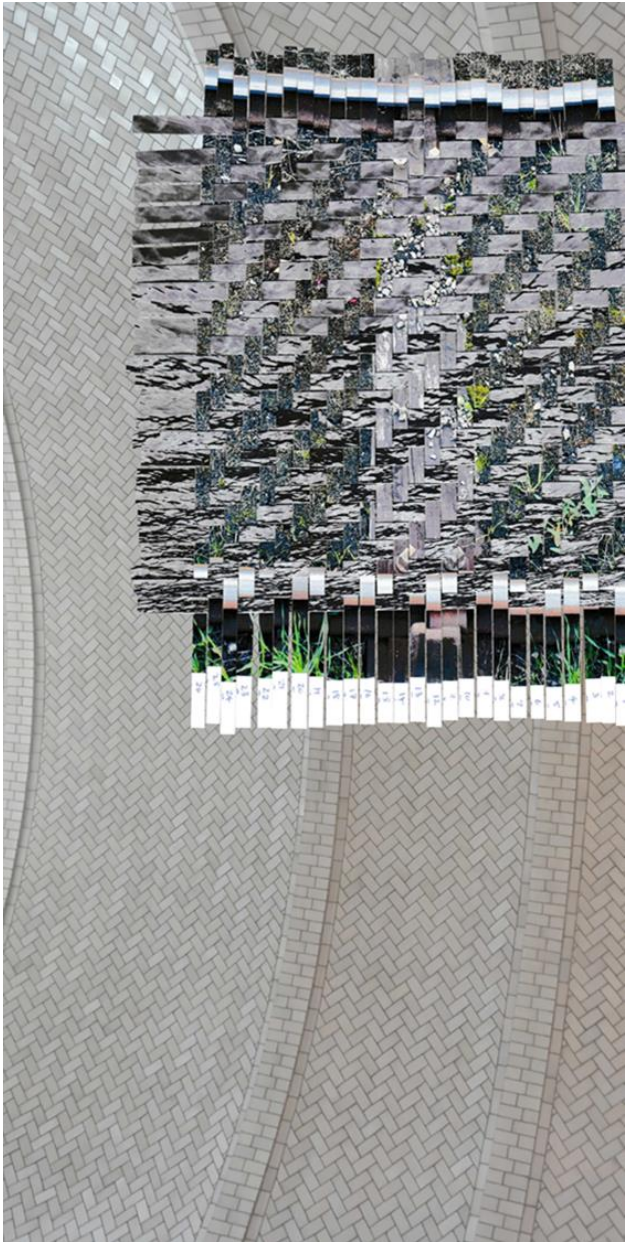


Remarks

Signed by





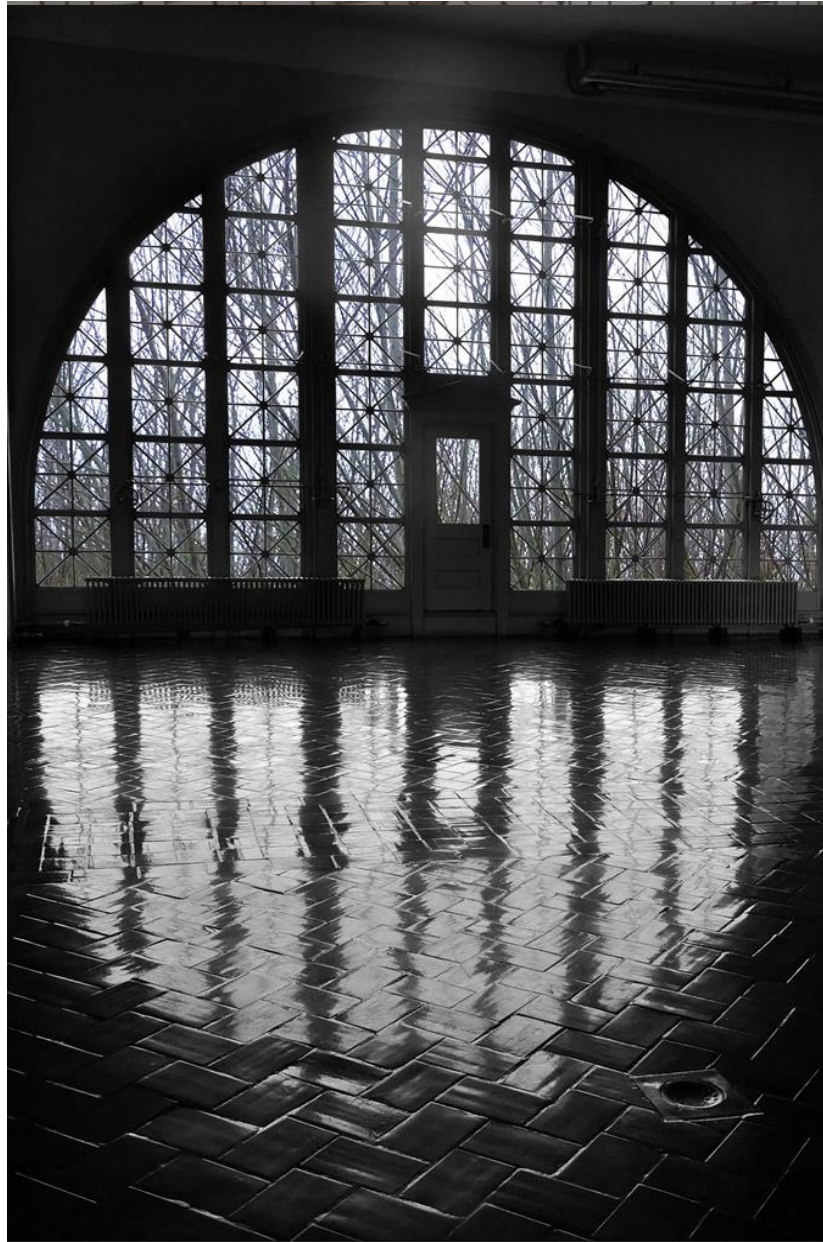
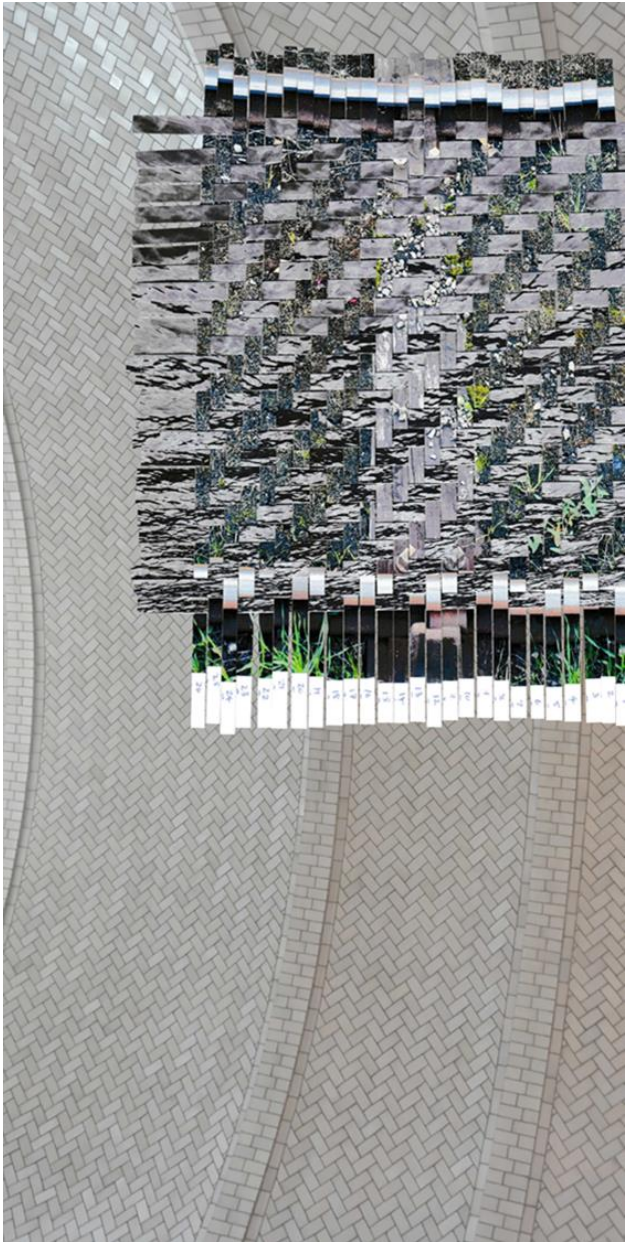


Ceiling of Great Hall at Ellis Island National Museum of Immigration where immigrants were processed.



Wicker Suitcase that belonged to Albert Gusset from Brienz, Switzerland. National Museum of Immigration.





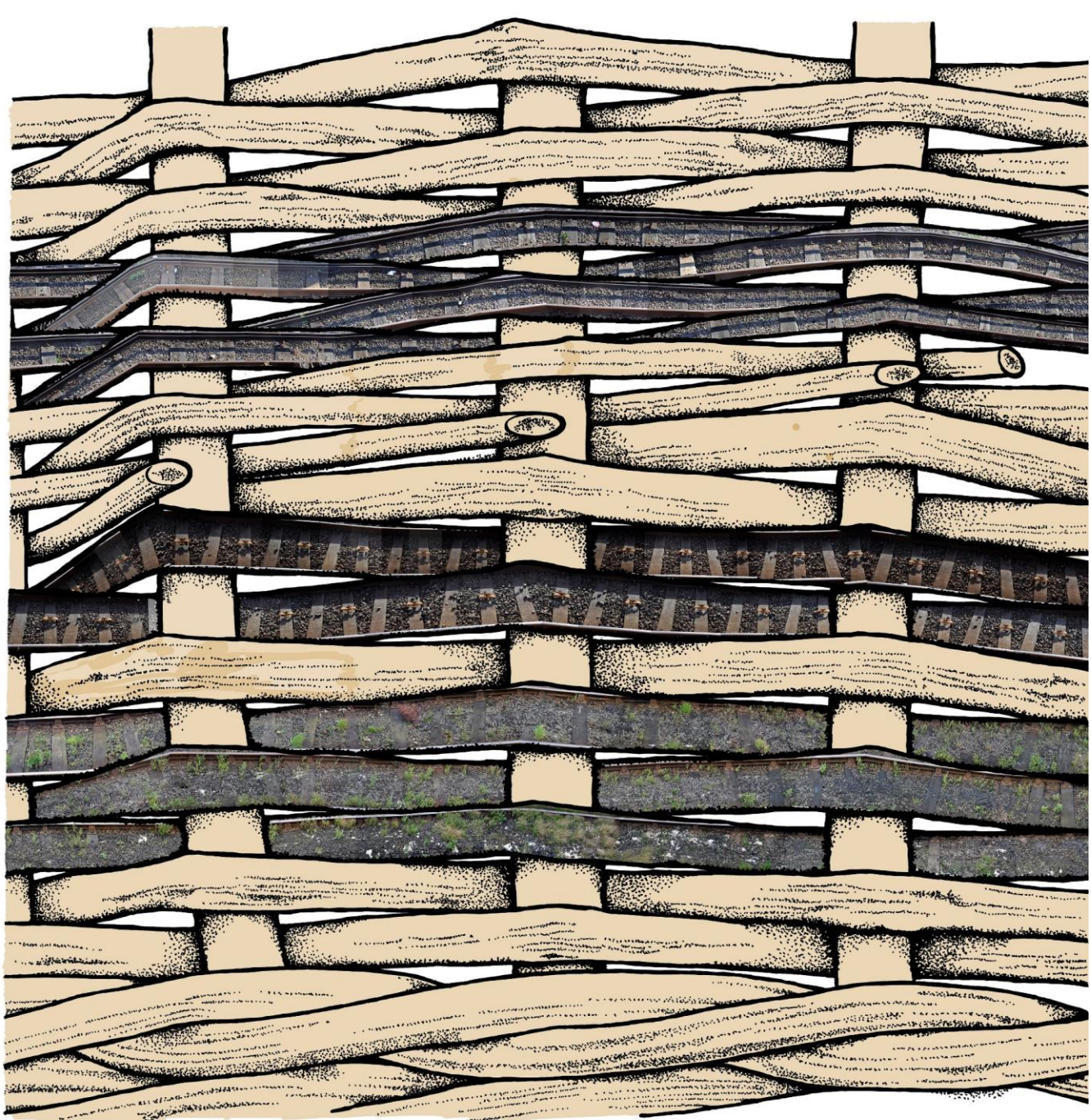
Wicker Suitcase that belonged to Albert Gusset from Brienz, Switzerland. National Museum of Immigration.



Concepts that travel









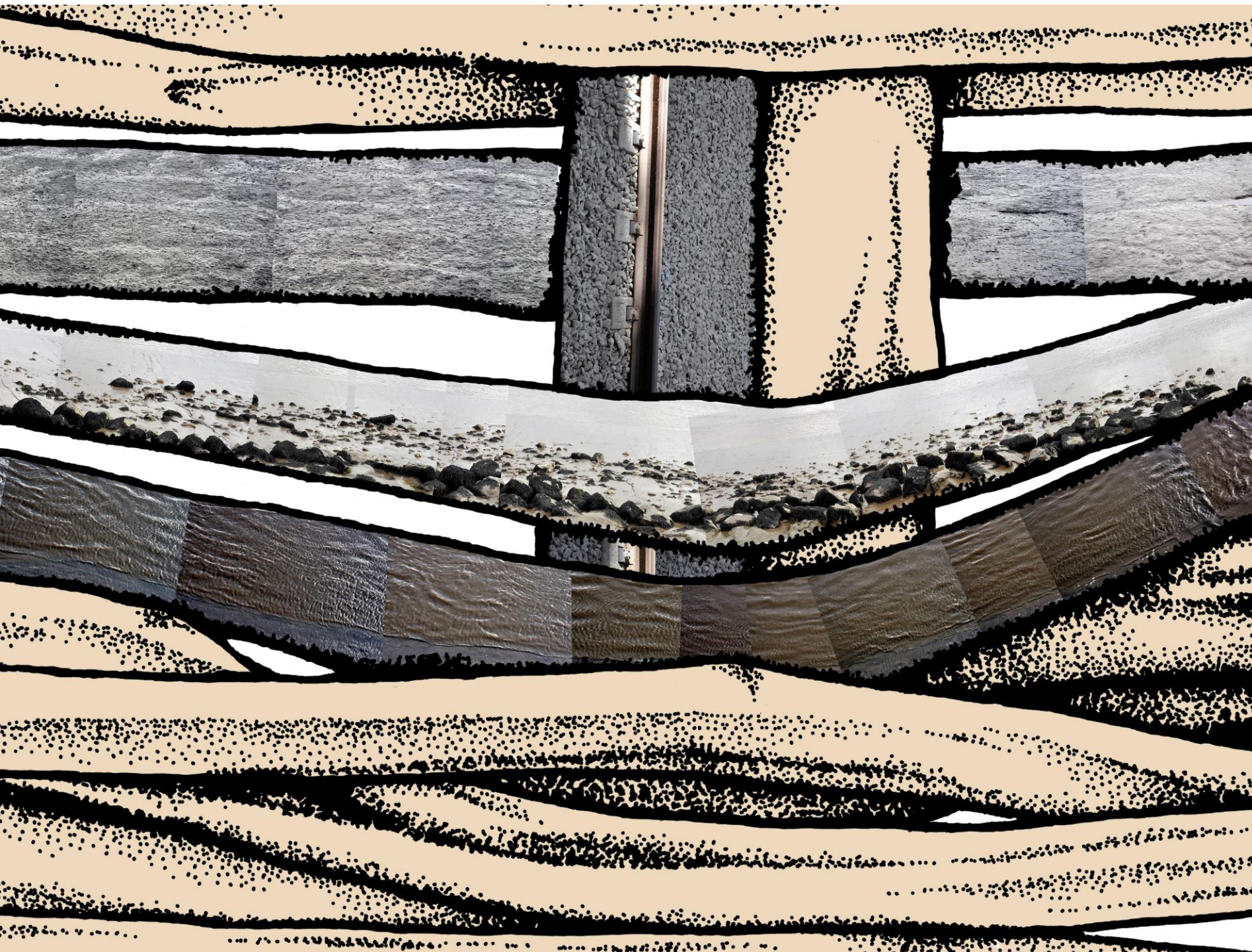
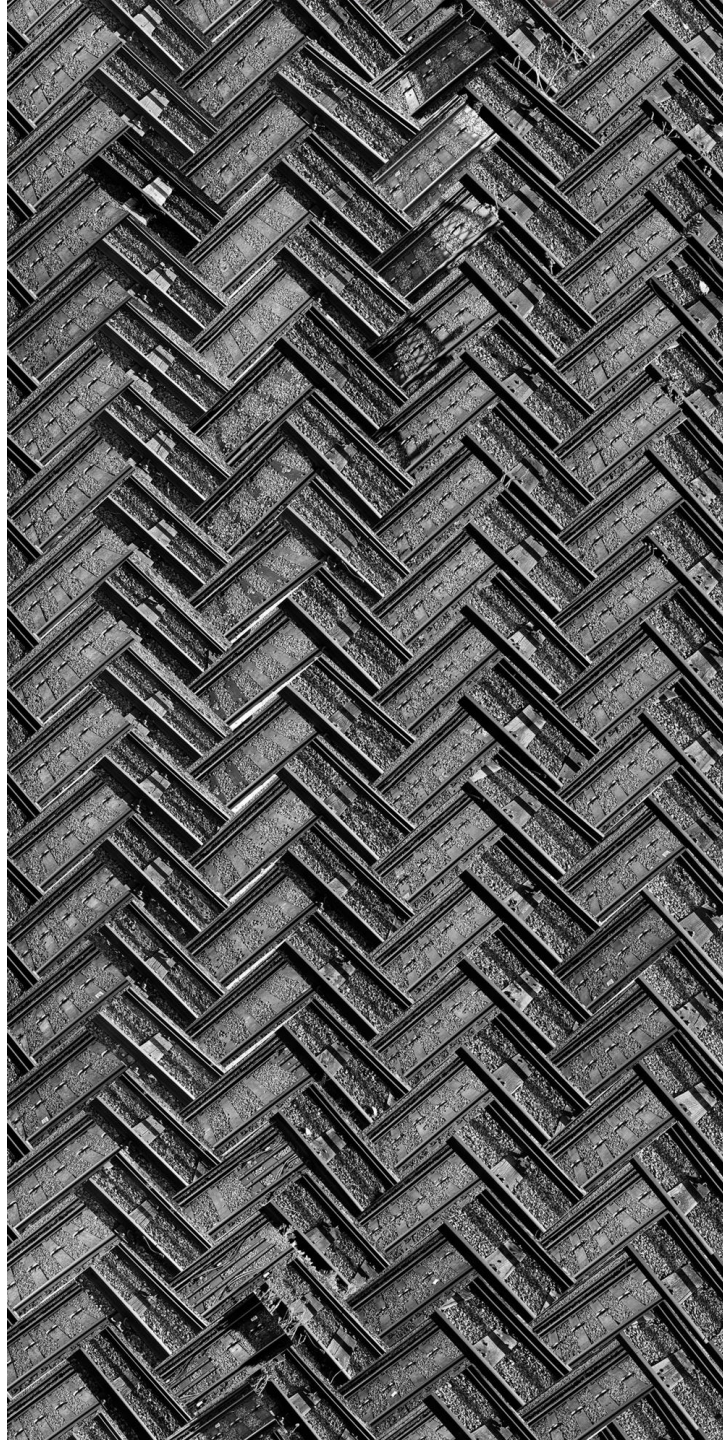
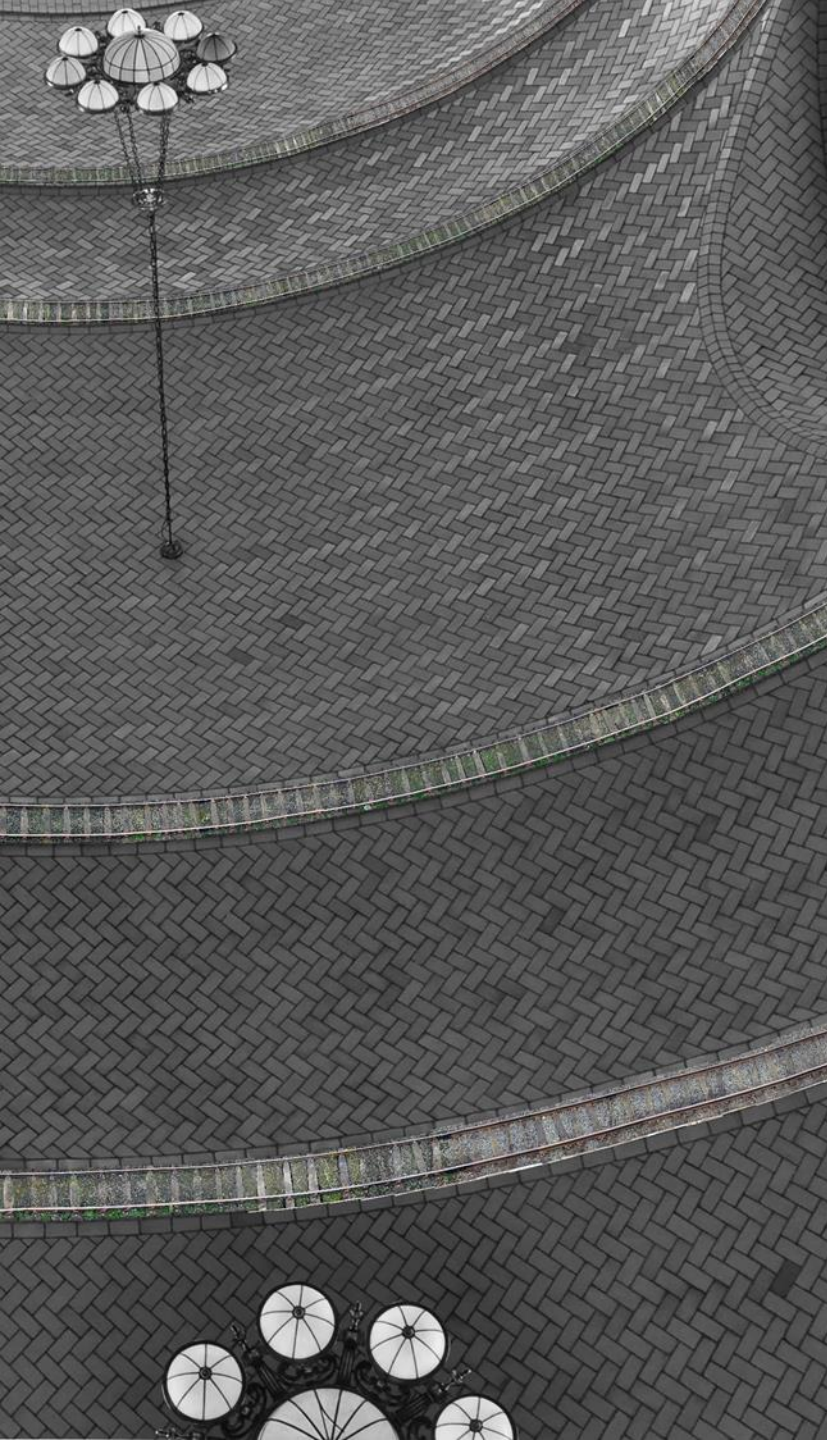


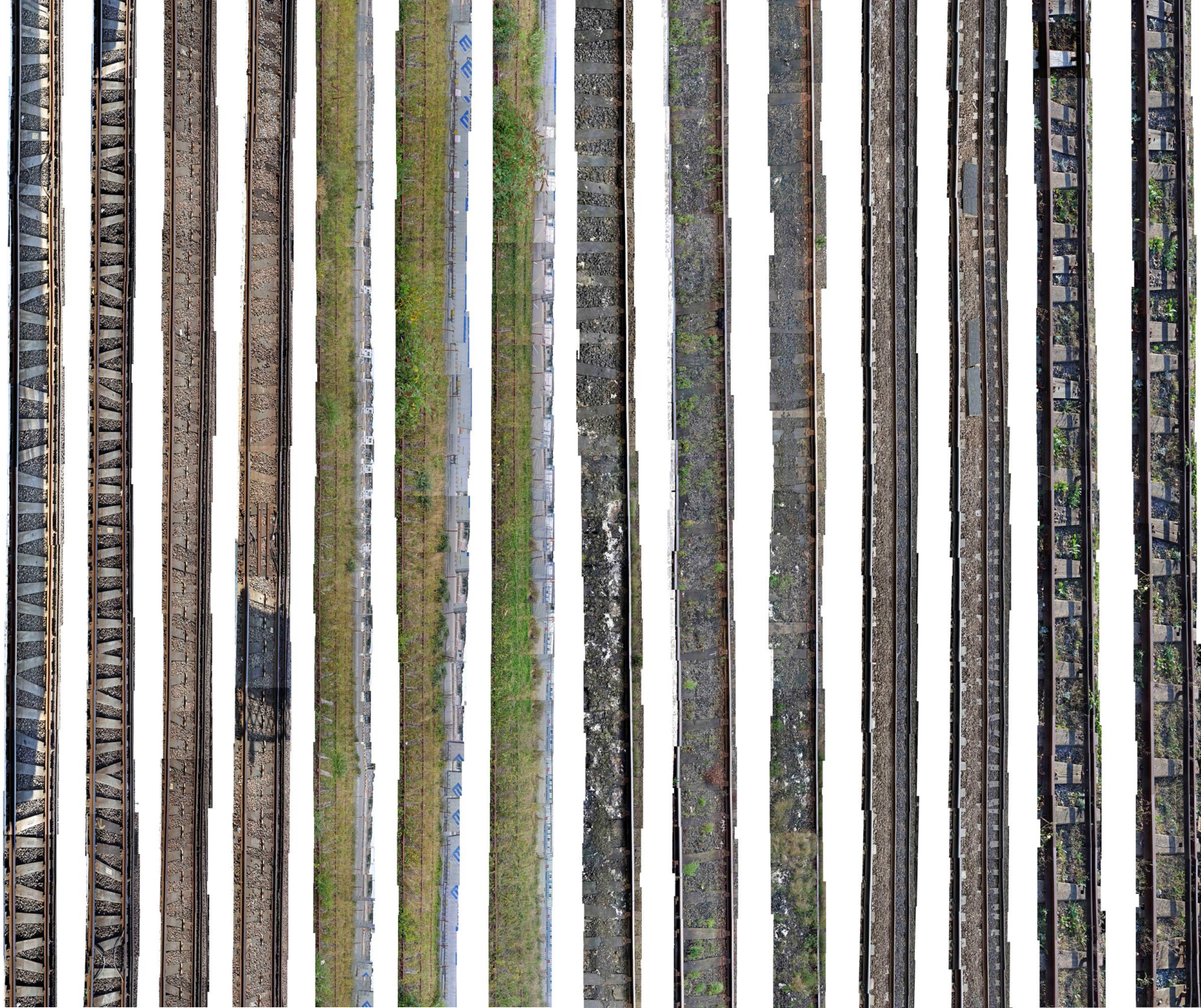
Diagram of Slewing, a type of decorative band used in basket weaving, with sequential documentation of Guimaraes train track in Portugal and The Humber, Hull.





Wicker Suitcase that belonged to Albert Gusset from Brienz, Switzerland (detail).  
National Museum of Immigration.

















*The Train Track and the Basket,*  
Hull Paragon Railway Station, 2017









In memory of those who left Hull station in  
1914-1918 (WWI) and never returned



In memory of those who left Hull station in  
1914-1918 (WWI) and never returned





[illegible]

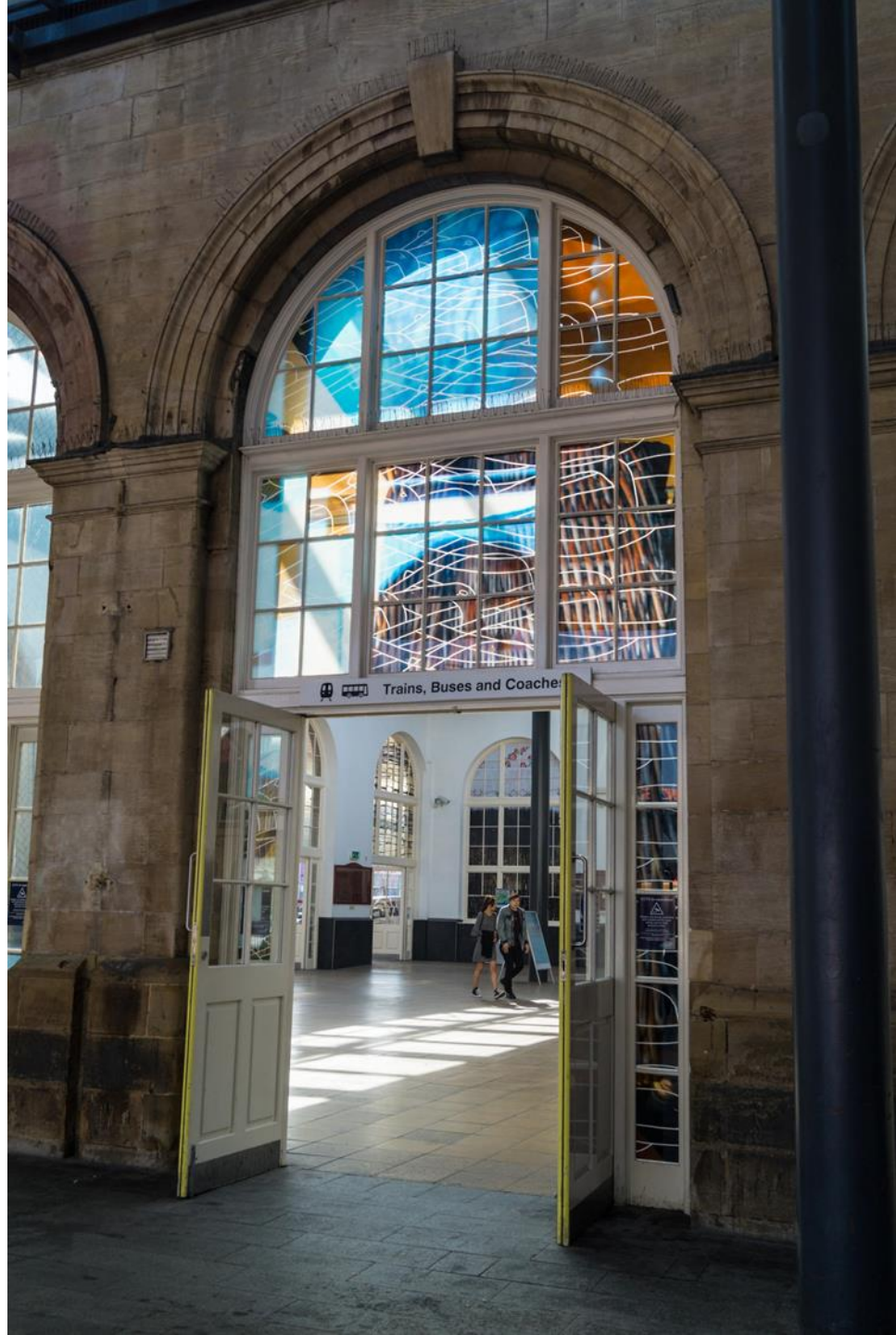












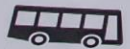












Trains, Buses and Coaches



























# References

- Barratt, O. E. (1991). Basket making. London: Charles Letts & Co Ltd.
- Butcher, M. E. (2010). Basket Borders. Kent: The Basket Makers Association.
- Evans, N. J. (2001) Work in progress: Indirect passage from Europe Transmigration via the UK, 1836-1914. In *Journal for Maritime Research*, 3:1, 70-84.
- Evans, N. J. (2006). Aliens en route: European transmigration through Britain, 1836-1914 (Unpublished doctoral thesis). University of Hull, Hull.
- Dines, T. (2013). The wild things: Guide to the changing plant life of the British Isles. London: Transworld Publishers.
- Gillow, J. and Sentence, B. (1999). World textiles. London: Thames & Hudson Ltd.
- Goldstein, K. (Curator). (1999). Packing for America: The prized and the practical [exhibition]. Exhibited at Pilgrim Hall Museum, Massachusetts June 1999 - May 2001.
- Hixson, K. (2011). Anna Wilson: Wind/Rewind/Weave. In *Textile*, Volume 9, Issue 2, pp.220-229.
- Israel, F. L. (1968). 1897 Sears Roebuck catalogue. New York: Chelsea House Publishers.
- Royer, R. (1977). Original fabric designs influenced by those imported by Scandinavian immigrants. Retrospective theses and dissertations, paper 7952. Iowa, USA: Iowa State University.