



University of HUDDERSFIELD

University of Huddersfield Repository

Walker, Martyn

The Development of Education and Training for the British Coal Industry and the Contributions made by Further and Higher Education with some Oral Testimonies

Original Citation

Walker, Martyn (2017) The Development of Education and Training for the British Coal Industry and the Contributions made by Further and Higher Education with some Oral Testimonies. In: BERA Annual Conference 2017, 5-7 September 2017, University of Sussex. (Unpublished)

This version is available at <http://eprints.hud.ac.uk/id/eprint/33433/>

The University Repository is a digital collection of the research output of the University, available on Open Access. Copyright and Moral Rights for the items on this site are retained by the individual author and/or other copyright owners. Users may access full items free of charge; copies of full text items generally can be reproduced, displayed or performed and given to third parties in any format or medium for personal research or study, educational or not-for-profit purposes without prior permission or charge, provided:

- The authors, title and full bibliographic details is credited in any copy;
- A hyperlink and/or URL is included for the original metadata page; and
- The content is not changed in any way.

For more information, including our policy and submission procedure, please contact the Repository Team at: E.mailbox@hud.ac.uk.

<http://eprints.hud.ac.uk/>

BERA Annual Conference University of Sussex 5 – 7 September 2017

‘The development of education and training for
the British coal industry and the contributions
made by further and higher education with
some oral testimonies’

Burnley Municipal College Prospectus 1940-1941, p.72



Dr Martyn Walker
University of Huddersfield



Walker, M (2015) 'Rule of thumb methods no longer suffice' Development of British coal industry education and training 1900 – 1970: Lessons for present-day education policy makers' *Journal of Educational Administration and History* , 47 (4).

UNION OF
NATIONAL MINEWORKERS
YORKSHIRE AREA

NO NUCLEAR POWER

PROSPERITY
PEACE
SOCIAL WELFARE
EQUALITY



HAPPINESS
HEALTH
EDUCATION
ENDEAVOUR

19	26
39	72
41	74
10	84

UNITY IS STRENGTH
DINNINGTON BRANCH

- Previous research had identified a scattering of Mining Institutes, particularly in the North East,
- Malicious Injuries to Property Act (1861)
- Marchioness of Londonderry, 1867



- City and Guilds London Institute 1888
- Technical Instruction Acts 1889



Working environments



- The Miners' Welfare Fund,
- Coal Mines Act of 1911,
- Foundation of Mining Colleges,
 - Barnsley, Yorkshire,
 - Chelmsford, Dinnington, Yorkshire,
 - Rotherham,
 - Wakefield and Castleford Colleges,
 - Burnley,
 - Wigan and District Mining and Technical College



**A career for
tomorrow
for young
lads of
today**

You're paid to learn a trade in the Country's

COALMINES

Barnsley Technical School Academic Year 1910- 1911

Examination Number of successes

County Council Mining Examinations	45
County Council Science Examinations	45
Board of Education (General) Examinations	7
County Council Commercial Examinations	69
National Union of Teachers' Examinations	31
Royal Society of Arts Examinations	17
City and Guilds London Institute (trades)	48
Scholarships to Sheffield and Leeds Universities	9

The Barnsley Education Committee Annual Distribution of Prizes and Report 1912,

Salaries in the mining industry in relation to qualifications 1962.

Department (Administration)	£18 - £20 per week
Under Manager	£1,125 - £1,500 p.a.
Manager	£1,400 - 2,100 p.a.
Agent	£1,750 - £2,400 p.a.
Group Manager	£2,000 - £2,750 p.a.
Production Manager	£2,250 - £3,000 p.a.
Area Manager	£4,000 maximum p.a.
Colliery Engineer	£900 - £1,400 p.a.
Group Engineer	£1,005 - £1,600
Area Engineer	£1,550 - £2,150
Divisional Engineer	£2,000 - £2,750
The NCB also sponsor scholarships to University	

Guide to Courses available at Barnsley Mining College y (1962), p.7.

Courses offered in the Mining Department at Rotherham College in 1956

- Juvenile Entrants Training Course,
- Pre-Senior Mining Course,
- Shot Firer's Certificate,
- Deputy's Certificate,
- Deputy's part time Certificate Course,
- General Craft Course (Mining, Colliery Electrical Engineering and Colliery Mechanical Engineering),
- Advanced Certificate Course (Colliery Electrical Engineering and Colliery Mechanical Engineering),
- Ordinary National Certificate (Mining, Mine Surveying, Mine Mechanical Engineering, Mine Electrical Engineering),
- Higher National Certificate (Mining, Mine Surveying),
- Colliery Managers' Certificate,
- A.M.I. Mining Engineering Course,
- Colliery Medical Attendance Course
- Colliery Rope-men's' Course

Chelmsford Institute			
Subject	Pass	Referred	Failed
Yorkshire Mining Exam Board, Pre-senior mining course.	44	14	22
General Mining Certificate.			
Calculations,	25	0	0
Drawing,	25	0	0
Science,	25	0	0
Workshop technology and practice.	19	0	6
General Mining Course Part 1.	5	0	2
General Mining Course Part 2.	5	0	5
National Certificate Course in Mining			
Ordinary National Certificate Part 1.	9	2	3
Ordinary National Certificate Part 2.	11	1	6

Wigan and District Mining and Technical College

Mining Courses:

Associate Membership Examination for the Institute of Mining Engineers,
Wigan District and Mining and Technical College Mining Diploma, Approved by the Ministry of
Power under the Mining and Quarries Act of 1954
National Diploma in Mining (three year sandwich course),
National Certificate in Mining,
Colliery Deputies and Shot firers,
City and Guilds London Institute (City and Guilds) Coal Preparation and Fuel
Testing
Geology, for the mining industry:
Colliery Diploma in Mining,
National Diploma in Mining,
Higher Nation Certificate in Mine Surveying,
Ordinary National Certificate in Mine Surveying,

Royal Institution of Chartered Surveyors,
Institute of Mining Engineers,
Institute of Fuel,
London University BSc Degrees (general and specialists),
Institute of Civil Engineers,

Geology for general interest: General Certificate in Education Ordinary ('O' level) and Advanced
('A' level) and degree level. Fieldwork is carried out in the Yorkshire Dales, Cliverger near Burnley
and Isle of Arran

Surveying for the mining industry:

National Certificate in Mine Surveying,
Royal Institute of Chartered Surveyors,
GCE 'O' Level,

Law for the mining industry:

Ownership and development of mineral properties for builders, finance,
surveyors and mining engineers,
Subsidence and support,

Mechanical Engineering for the mining industry:

Colliery Mechanical Engineering,
Craft apprentice,
Mechanical Mining National Certificate
General Mining Mechanical,
Mining Industry Certificate for Mining Engineers,
City and Guilds in Mining and Mechanical Engineering (Class I and II),

Electrical Engineering for the mining industry:

Colliery Electrical Engineering,
Craft Apprentice,
City and Guilds Mining Electrical Engineer,

Wigan and District Mining and Technical College

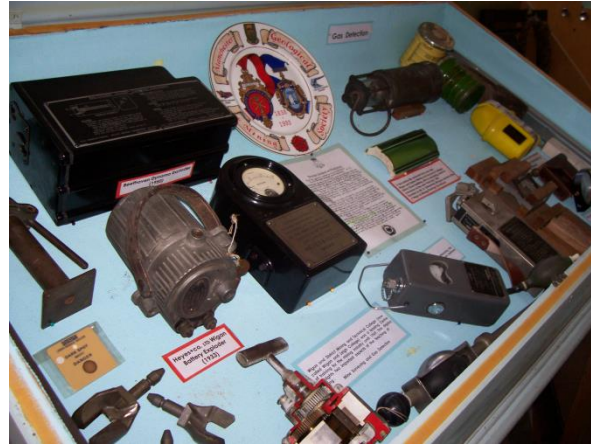


Former Wigan and District Mining and Technical College Mining & Geology Laboratory

The Museum was 'saved' by a IT Lecturer who painstakingly put it back together in a classroom (on loan) at the Leigh site



Geology Museum



Mining Equipment



Model Coal Tubs for Measuring Gradients



Model of an underground working

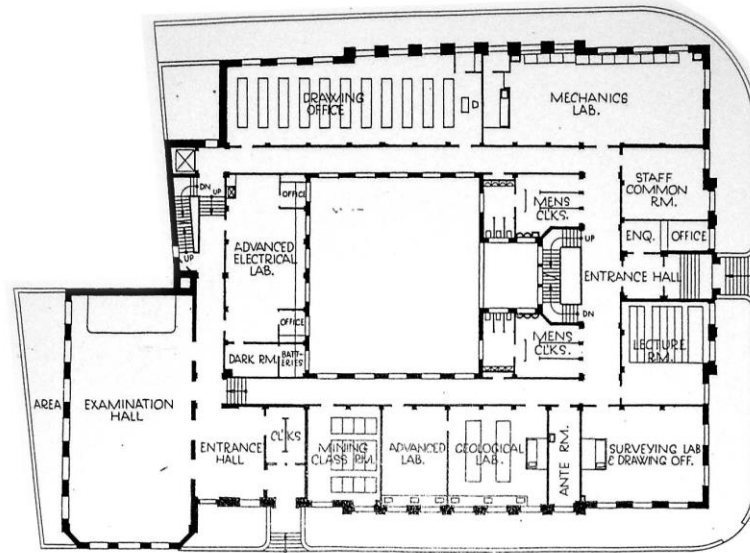


Fossils from recovered from local coal mines

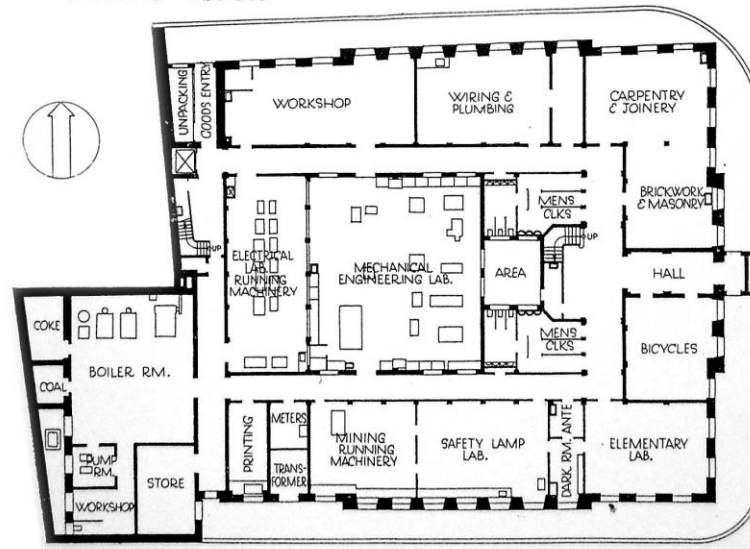


Gas Detection Lamp

Barnsley Mining College

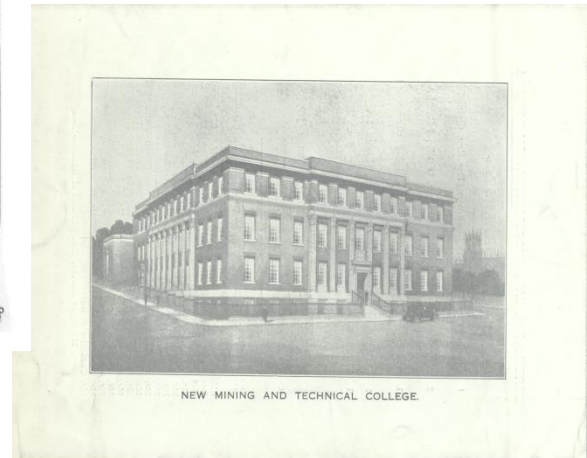


GROUND FLOOR



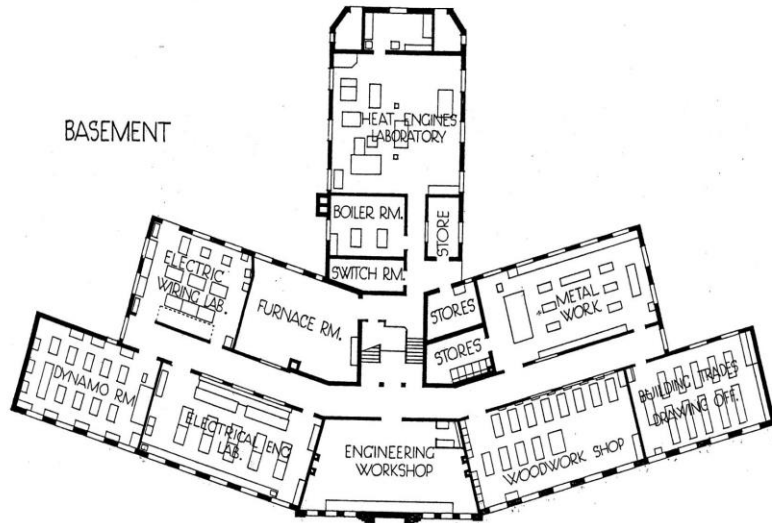
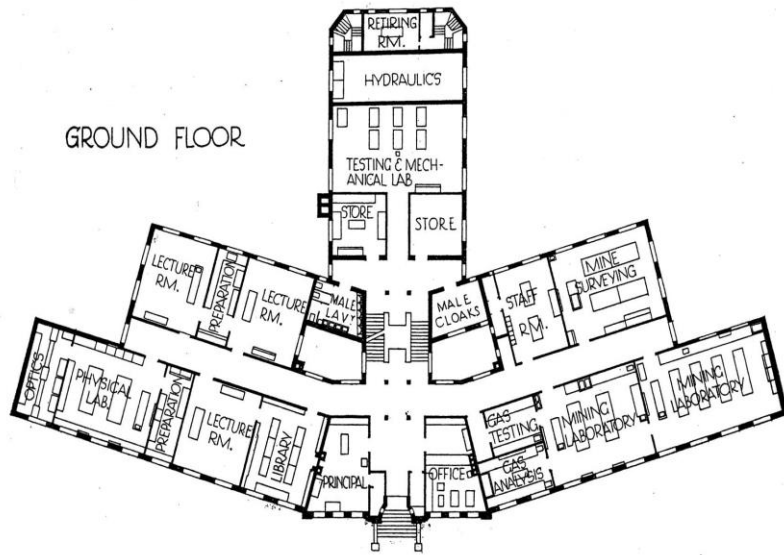
BASEMENT

10 0 10 20 30 40 50 60 70
SCALE OF FEET



NEW MINING AND TECHNICAL COLLEGE.

Rotherham Mining and Technical College



ROTHERHAM TECHNICAL COLLEGE





Whitwood Mining and Technical College



Chelmsford Mining and Technical Institute



Burnley Municipal College



Atherton Science and Art School



Tyledesley Technical School



Leigh Municipal College (pt of Wigan & Leigh College)



Firth College Mining Department now University of Sheffield

Higher Education

- Glasgow University,
- Durham at Newcastle University,
- Manchester University,
- Leeds University,
- Sheffield University

NCB sponsored degrees at these universities.

‘Controlled’ the numbers of undergraduates each year.

NCB also sponsored sons and daughters of miners who were offered places at university.

Oral education history

Case study 1. John North East Coalfield

Case study 2. Alan Lancashire Coalfield



Case study 3. Dave Yorkshire Coalfield

Case study 4. Dan Yorkshire Coalfield

Summary

- From Rule of thumb to higher degrees,
- Employer funding: (NCB),
- Miners to Teachers,
- Mining Departments worked collaboratively with other subject areas,
- Decline in mining qualifications during 1980s but colleges and HEIs: offered qualifications for overseas students,
- Qualifications at all levels were highly regarded by employers outside the coal industry.