

University of
HUDDERSFIELD
Inspiring tomorrow's professionals

Joanne Harris BA (Hons) MA FHEA PgCert

The Surface Design Show 2014

**SURFACE
DESIGN
SHOW**

BUSINESS DESIGN CENTRE
LONDON - 4.6 FEB 2014

The Surface Design Show 2014

Exhibition stand curated by Joanne Harris



Business Design Centre Islington

Surface Design Show focuses solely on showcasing the finest and most inspiring internal and external surface materials and lighting.

It attracts over 5000 visiting architects, designers and specifiers.

University of
HUDDERSFIELD
Inspiring tomorrow's professionals

Joanne Harris BA (Hons) MA FHEA PgCert

The Surface Design Show 2014

**SURFACE
DESIGN
SHOW**

BUSINESS DESIGN CENTRE
LONDON - 4.6 FEB 2014

The Surface Design Show 2014

Exhibition stand curated by Joanne Harris

Making it Real

The 2014 Exhibition presented “Making it Real” an exhibition of surface design product prototypes for the interiors and architectural industries . Demonstrating the importance of real time experience of designing for industry through sponsored and collaborative industry design and research projects. The 2014 Exhibition presented “Making it Real” an exhibition of surface design product prototypes for the interiors and architectural industries . Demonstrating the importance of real time experience of designing for industry through sponsored and collaborative industry design and research projects.

Making it Real showcases the University's passion for enterprise and innovation, highlighting the real learning and creative experience offered to students through a series of industry sponsored projects. They highlight ideas for surface solutions, future materials research and present work from collaborative projects with **Ege Carpets**, CD UK and **NovaGlaze**. This year staff from surface and textiles will be showcasing a sneak preview of their research that predominately focusses on concepts that challenges sustainable practices and future material applications within a wider context, to proactively engage viewers to consider the impact that new materials within the fields of science, technology and design will have on enhanced living environments.





BA(Hons) Textiles with Surface Design Second Year Ege Carpets Sponsored Project Winners Visit the Show



Making it Real Stand showcased the innovation and creativity of ideas through industry collaboration

Making

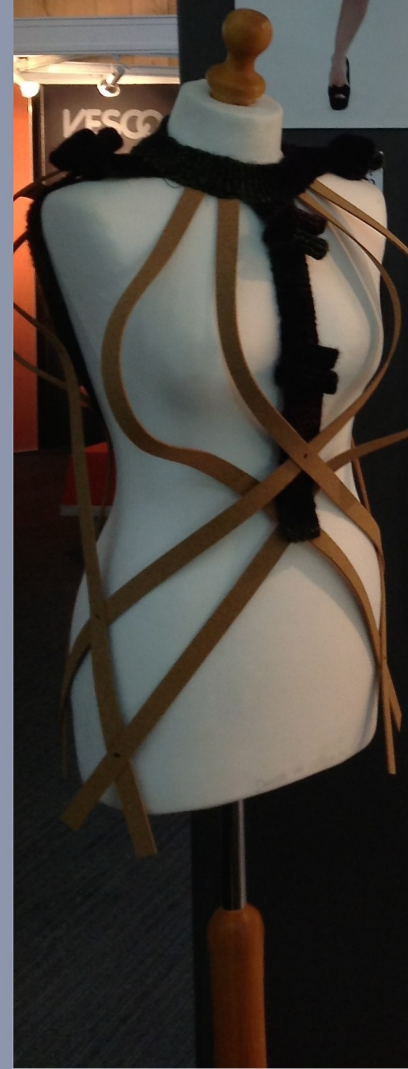


Montgomery Exhibitions for The Surface Design Show:
Sponsoring Final Year Surface Design Student Danielle
McGilloway

The 84th Annual Surface Design Show at The University of Huddersfield has been selected as the most influential Surface Design Show for the past seven years and has been the most educational exhibition for the last three years.

Finalist McGilloway's creative project work has been recognized by Montgomery's exhibition and competition.

The Surface Design Show is a platform for students to showcase their work and receive feedback from industry professionals. The show is a key event in the Surface Design community and is a great opportunity for students to network and learn from others.



FUTURE MATERIALS *Research*

UNIVERSITY OF
HODDERSFIELD
UNIVERSITY OF THE WEST
OF ENGLAND





BA(Hons) Surface Design Graduate Deborah Scott

Graduate Deborah Scott collaborated with Industry Contact NovaGlaze to produce Industry ready prototypes of laminated glass tiles. The laminated tile consist of fabric and UV Printed Plastics and paper art work.



The University of Huddersfield

Making it Real



Martini



FUTURE MATERIALS

Research



VCAIWI



BA(Hons) Surface Design Graduate Material Trend Research by Laura Greenwood (left) and Concrete Tiles by MA Research Student Rebecca Fairley



The stand is consistently busy visitors are always impressed and interested in the concepts and Ideas on Exhibition



Surface Design Student Collaborated with CD UK

Rachel Webb, Surface Design student

"It's been a great experience collaborating with CD(UK) Ltd, feedback and suggestions from Gary Baker have really helped with the development of the Corian® designing; the future progression of this project is really exciting."

CORIAN®

DISTRIBUTED BY CD (UK) Ltd

www.cdukltd.co.uk

ThermoLine

EXTERNAL CLADDING



CD(UK) Ltd who are distributors of DuPont™ Corian® in the UK. During the project students have worked closely with Managing Director Gary Baker to challenge the material and look at researching creative new outcomes.

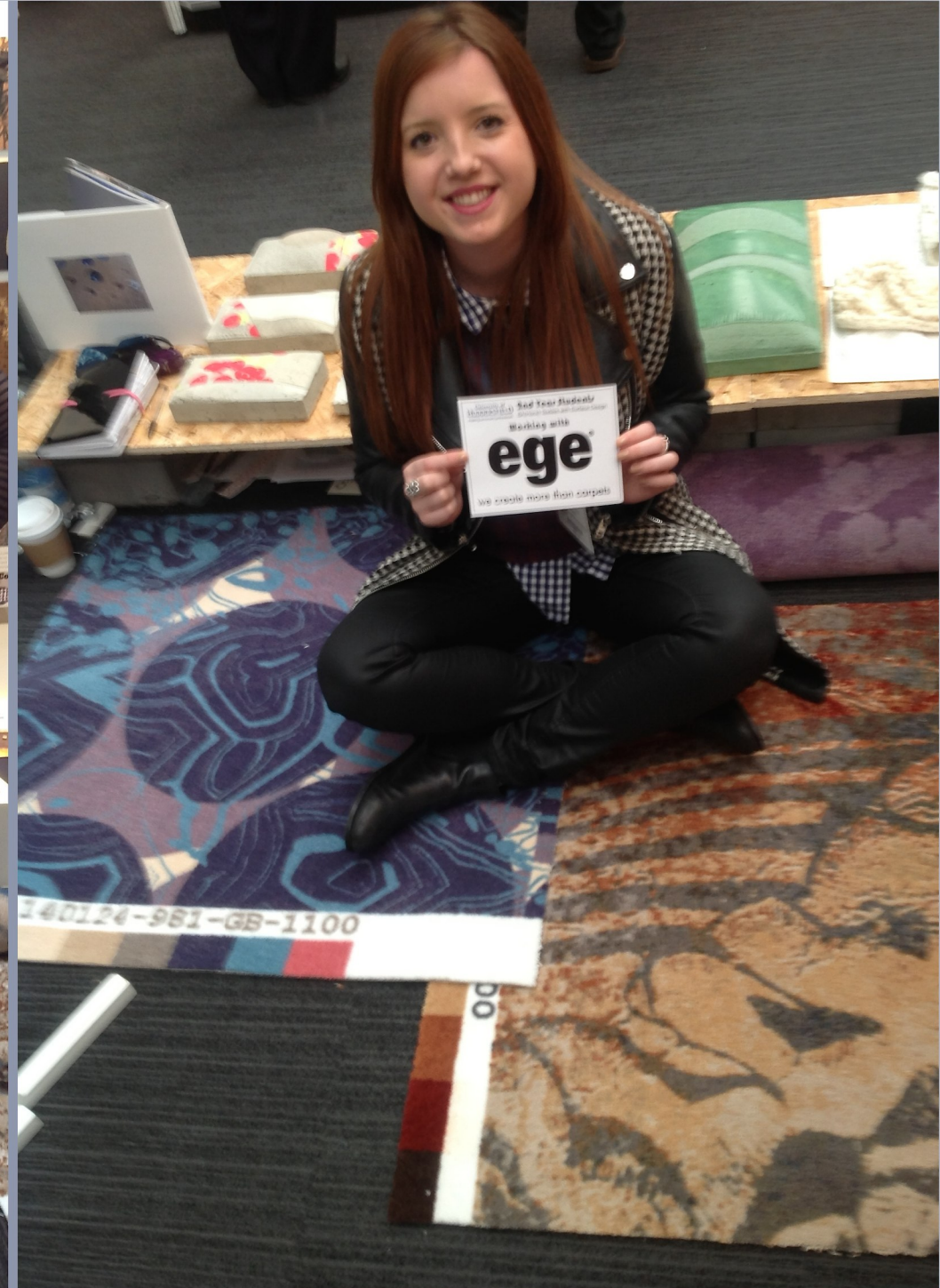
“Huddersfield University represent the next generation of designers who will help to push the boundaries in terms of how Corian® can be used and applied. Rachel’s project has already started us looking at brand new techniques for working with Corian®.”

Gary Baker, Managing Director CD(UK) Ltd

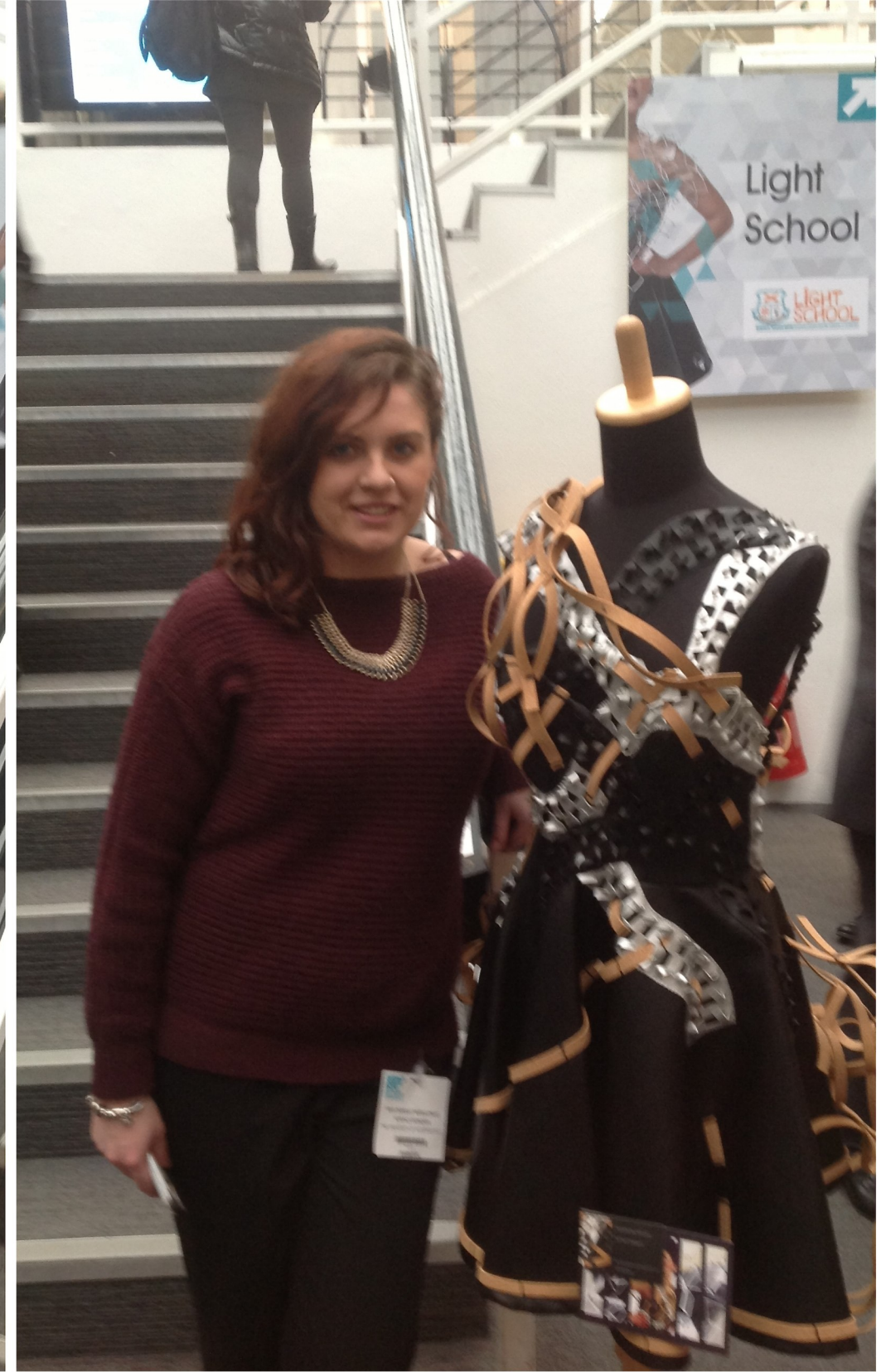




Student Design work digitally printed by Ege Carpets to create “Real” Product Samples



Jo Cybulska (left) Surface Design Graduate now Design assistant at Ege Carpets with Jo Harris BA(Hons) Surface Design Course Leader at The University of Huddersfield with exhibited carpet samples.





Surface Design Student works in collaboration with the shows organisers to produces the two main mixed media wearable structure for the 2014 Surface Design Show main marketing image.

