



University of HUDDERSFIELD

University of Huddersfield Repository

Carr, Martin, Bensasson, Douda and Bergman, Casey M.

Evolutionary genomics of transposable elements in *Saccharomyces cerevisiae*

Original Citation

Carr, Martin, Bensasson, Douda and Bergman, Casey M. (2012) Evolutionary genomics of transposable elements in *Saccharomyces cerevisiae*. PLoS ONE, 7 (11). e50978. ISSN 1932-6203

This version is available at <http://eprints.hud.ac.uk/id/eprint/15812/>

The University Repository is a digital collection of the research output of the University, available on Open Access. Copyright and Moral Rights for the items on this site are retained by the individual author and/or other copyright owners. Users may access full items free of charge; copies of full text items generally can be reproduced, displayed or performed and given to third parties in any format or medium for personal research or study, educational or not-for-profit purposes without prior permission or charge, provided:

- The authors, title and full bibliographic details is credited in any copy;
- A hyperlink and/or URL is included for the original metadata page; and
- The content is not changed in any way.

For more information, including our policy and submission procedure, please contact the Repository Team at: E.mailbox@hud.ac.uk.

<http://eprints.hud.ac.uk/>

Evolutionary Genomics of Transposable Elements in *Saccharomyces cerevisiae*

Martin Carr^{1*}, Douda Bensasson², Casey M. Bergman²

1 School of Applied Sciences, University of Huddersfield, West Yorkshire, United Kingdom, **2** Faculty of Life Sciences, University of Manchester, Manchester, United Kingdom

Abstract

Saccharomyces cerevisiae is one of the premier model systems for studying the genomics and evolution of transposable elements. The availability of the *S. cerevisiae* genome led to unprecedented insights into its five known transposable element families (the LTR retrotransposons *Ty1-Ty5*) in the years shortly after its completion. However, subsequent advances in bioinformatics tools for analysing transposable elements and the recent availability of genome sequences for multiple strains and species of yeast motivates new investigations into *Ty* evolution in *S. cerevisiae*. Here we provide a comprehensive phylogenetic and population genetic analysis of all *Ty* families in *S. cerevisiae* based on a systematic re-annotation of *Ty* elements in the S288c reference genome. We show that previous annotation efforts have underestimated the total copy number of *Ty* elements for all known families. In addition, we identify a new family of *Ty3*-like elements related to the *S. paradoxus Ty3p* which is composed entirely of degenerate solo LTRs. Phylogenetic analyses of LTR sequences identified three families with short-branch, recently active clades nested among long branch, inactive insertions (*Ty1*, *Ty3*, *Ty4*), one family with essentially all recently active elements (*Ty2*) and two families with only inactive elements (*Ty3p* and *Ty5*). Population genomic data from 38 additional strains of *S. cerevisiae* show that the majority of *Ty* insertions in the S288c reference genome are fixed in the species, with insertions in active clades being predominantly polymorphic and insertions in inactive clades being predominantly fixed. Finally, we use comparative genomic data to provide evidence that the *Ty2* and *Ty3p* families have arisen in the *S. cerevisiae* genome by horizontal transfer. Our results demonstrate that the genome of a single individual contains important information about the state of TE population dynamics within a species and suggest that horizontal transfer may play an important role in shaping the genomic diversity of transposable elements in unicellular eukaryotes.

Citation: Carr M, Bensasson D, Bergman CM (2012) Evolutionary Genomics of Transposable Elements in *Saccharomyces cerevisiae*. PLoS ONE 7(11): e50978. doi:10.1371/journal.pone.0050978

Editor: Jason E. Stajich, University of California Riverside, United States of America

Received: September 4, 2012; **Accepted:** October 31, 2012; **Published:** November 30, 2012

Copyright: © 2012 Carr et al. This is an open-access article distributed under the terms of the Creative Commons Attribution License, which permits unrestricted use, distribution, and reproduction in any medium, provided the original author and source are credited.

Funding: This work was partly supported by a NERC Fellowship to Douda Bensasson [grant number NE/D008824/1] (<http://www.nerc.ac.uk>). No additional external funding was received for this study. The funder had no role in study design, data collection and analysis, decision to publish, or preparation of the manuscript.

Competing Interests: The authors have declared that no competing interests exist.

* E-mail: MartCarr74@gmail.com

Introduction

Transposable elements (TEs) have been shown to be a component of most, although not all, studied eukaryotic genomes [1]. Empirical and theoretical work from a broad range of host organisms suggests that TE insertions are generally deleterious and that natural selection acts to suppress proliferation in host populations [2–7]. Classically, it has been thought that a balance between increases in copy number by transposition and selection against deleterious insertions govern the dynamics of TE evolution [8]. However, more recent work has shown that some proportion of TE insertions may also evolve under positive selection (e.g. [9–13]), and that TE families undergo horizontal transfer at a higher rate than previously anticipated (e.g. [14–17]). In the genomics era, many unresolved questions about the factors that control TE evolution can now be addressed with the growing volumes of available sequence data.

The first eukaryote to have its genome completely sequenced was the yeast *Saccharomyces cerevisiae* [18]. This landmark achievement allowed unprecedented insights into the impact that TEs have on genome structure and evolution. The 12.2 Mb yeast

genome is known to harbour five families of TEs, *Ty1* through *Ty5*, all of which are long terminal repeat (LTR) retrotransposons [19]. *Ty1* and *Ty2* have been studied intensively and are known to be active families [20] that together make up ~75% of the *Ty* insertions in the reference genome [21,22]. These two closely-related families can be differentiated by sequence divergence in their *gag* open-reading frame (ORF) and a hypervariable region of the *pol* ORF [22]. In contrast, the only fixed difference between their LTR sequences is a one base pair deletion present in all copies of *Ty2* [22]. The high level of nucleotide identity between *Ty1* and *Ty2* LTRs permits interfamily recombination, and elements with hybrid *Ty1/2* LTRs are present in the *S. cerevisiae* genome [23]. The smaller families *Ty3-Ty5* have been characterised to a more limited extent: *Ty3* is thought to be an active family [24] with full-length elements in the genome; full-length copies of *Ty4* exist in the genome but transposition of this family has not been observed [25]; and there are no longer any functionally-intact copies of *Ty5* in the yeast genome [19].

The abundance of *Ty* elements varies considerably between populations of *S. cerevisiae*, with lab strains tending to possess greater abundance than wild populations [26,27]. The relatively

low copy numbers observed in wild populations, despite ongoing transposition, is consistent with the proliferation of elements being held in check by natural selection. Work by Blanc *et al.* [28] has suggested that the presence of a single *Ty* element insert results in a <2% loss of fitness. Not all *Ty* element insertions result in deleterious mutations, however, with some *Ty* insertions being proposed to play adaptive roles in the evolution of gene regulation [29]. As with other eukaryotes, the evolutionary and genomic forces that control TE abundance and variation in yeast remain a matter of debate, necessitating detailed investigation of the copy number, allele frequency and sequence variation of *Ty* elements within and among *S. cerevisiae* genomes.

Kim *et al.* [22] conducted the first systematic survey of *Ty* insertions in the *S. cerevisiae* reference genome, determining both the copy number and genomic distribution of all five known *Ty* families and performing a phylogenetic analysis of *Ty1* and *Ty2* LTR sequences. Jordan and McDonald [30] used the element copies identified by Kim *et al.* [22] to show that all five *Ty* families exhibit low levels of sequence variation in their ORFs and appear to be evolving under purifying selection. Comparative analysis involving other species of *Saccharomyces sensu stricto* clade [31–34] provides evidence that *Ty* families have been inherited both vertically and horizontally within the *Saccharomyces* genus, as well as undergoing occasional loss from their host's genome. These insights into the evolution of *Ty* families in *Saccharomyces* species have been based primarily on single reference genomes. Genomic analysis of *Ty* elements in multiple individuals within species has, until very recently, required sophisticated microarray techniques to be devised [35–37]. However, with the advent of high-throughput re-sequencing approaches, it is now possible to add a population genomic perspective to the evolution of *Ty* elements in yeast species [27,38–42].

Here we investigate the evolutionary genomics of all *Ty* families in *S. cerevisiae* using a combination of bioinformatic, phylogenetic and population genomic approaches. We first provide a re-annotation of the *S. cerevisiae* reference genome, showing a considerably larger copy number than that originally reported by Kim *et al.* [22]. The majority of newly discovered *Ty* insertions are small, degenerate fragments that provide important data for inferring the evolutionary history of these families. In addition to finding new insertions of all five known *Ty* families, we also find insertions for a previously unannotated family, *Ty3p*. We then conduct phylogenetic and molecular evolutionary analyses on LTR sequences of all *Ty* families, which provide insight into the transpositional activity and evolutionary history of these families. For all *Ty* copies present in the reference genome, we also determine their presence or absence in a large sample of genomes from the *Saccharomyces* Genome Resequencing Project (SGRP) [27] and map this population genomic data onto *Ty* element phylogenies. In general, we find strong concordance between inferences of insertion history based on phylogenetic analysis with those based on population genomic evidence, but also identify a small subset of young *Ty* insertions at high frequency that may be under the influence of natural selection. Finally, we investigate the origins of *Ty2* and *Ty3p* in *S. cerevisiae* by phylogenetic analysis of the *Ty1/Ty2* and *Ty3/Ty3p* super-families in the *Saccharomyces sensu stricto* clade, and provide evidence that both *Ty2* and *Ty3p* in *S. cerevisiae* arose by horizontal transfer at different times in the past. Together our results demonstrate that the reference genome of a single individual contains important information about the state of TE population dynamics within a species, but that full insight into TE evolutionary genomics requires complete genome sequences from multiple individuals and species.

Materials and Methods

Re-annotation of Ty Elements in *S. cerevisiae*

The June 2008 (sacCer2) version of the *S. cerevisiae* genome was downloaded from the UCSC Genome database and screened for TE sequences using RepeatMasker open-3.1.6 using a custom yeast TE library that includes *Ty1-Ty5* from *S. cerevisiae* as well as *Ty3p* from *S. paradoxus* (File S1). Our custom TE library was constructed by exporting “saccharomyces” from the 20061006 RepeatMasker library, removing the redundant TY sequence, replacing TY4 with the first LTR element (positions 262–632) and internal sequence (positions 633–6116) from GenBank accession X67284 [43], adding the *Ty3p* LTR (Genbank: AY198187) and internal sequences (positions 306–4980 of Genbank: AY198186) [32], and renaming fasta headers for consistency. The decision to include *Ty3p* in our library was based on preliminary analyses that revealed additional *Ty3*-like sequences in the *S. cerevisiae* genome that were not fully identified using the *Ty3* element as a query.

RepeatMasker output was then processed with REANNOTATE version 26.11.2007 (options: -g -f -d 10000) [44] in order to join LTRs to internal sequences and defragment nested and degenerate insertions (see Figure 1 for an example screenshot of the REANNOTATE output). LTR sequences from *Ty1* and *Ty2* were treated as equivalent in the defragmentation process. We then compared individual *Ty* copies from the REANNOTATE output to *Ty* annotations in sacCer2 taken from SGD and a small number were manually edited to correct any obvious errors. In total, 10 *Ty* annotations from the REANNOTATE output were manually split or joined to correct defragmentation problems, and coordinate spans of an additional 19 REannotate fragments were updated to remove redundant overlaps among features.

LTR sequences of *Ty1* and *Ty2* are distinguished by a single base pair deletion in *Ty2* elements [22]. We labelled LTRs identified by REANNOTATE from either of these families as *Ty2* when this deletion could clearly be identified. We also re-evaluated the identity of all *Ty1* and *Ty2* LTRs after a preliminary phylogenetic analysis of LTRs from both families. All LTRs nested within the *Ty2* clade, including those that had secondary deletions spanning the diagnostic one bp *Ty2* deletion, were then relabelled as *Ty2* inserts. In total, 85 LTR fragments were relabelled from *Ty1* to *Ty2* or *vice versa*. The final dataset of curated *Ty* annotations can be found in File S2 and the RepeatMasker/REANNOTATE fragments supporting these annotations can be found in File S3.

Phylogenetic Analysis of Paralogous LTR Sequences

Multiple alignments of paralogous LTRs were created individually for all five families (*Ty1*, *Ty2*, *Ty3+Ty3p*, *Ty4* and *Ty5*) using MUSCLE 3.7 [45]. Phylogenetic trees were generated from each alignment using maximum likelihood and Bayesian inference analyses. The maximum likelihood analyses were performed using RAxML 7.2.6 [46] on raxmlGUI 0.9.3. The analyses were initiated with 100 parsimony trees, created using the recommended GTRCAT model incorporating 25 site-rate categories, and bootstrapped with 1,000 replicates. Parameters for each analysis were determined by RAxML. Bayesian phylogenies were created using MrBayes 3.1.2 [47]. MrBayes analyses were run using a GTR+I+ Γ model and a four-category gamma distribution. Searches consisted of two parallel chain sets run at default temperatures, with a sample frequency of 10, until they had reached convergence (i.e. average standard deviation of split frequencies equal to 0.01) or had ran for 5,000,000 generations. Runs consisted of a minimum of 500,000 generations. The first

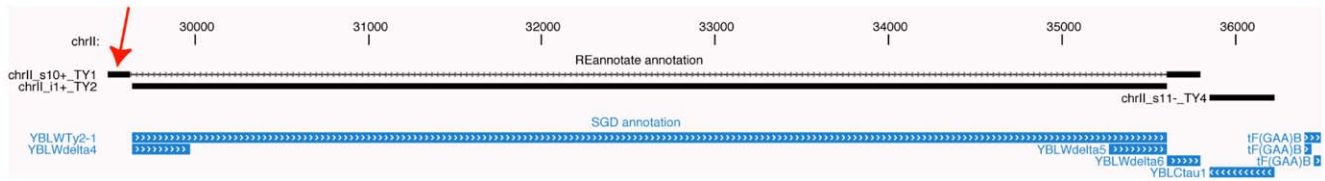


Figure 1. Example re-annotation of Ty elements in the *S. cerevisiae* genome. Re-annotation of Ty elements using RepeatMasker and REannotate is shown in black above, and the original annotation of Ty elements and tRNA genes are shown in blue below. The red arrow indicates a newly annotated Ty1 fragment 5' to a full-length Ty2 element that joins with a pre-existing Ty1 fragment 3' to the Ty2 element, revealing a new TE nesting event.

doi:10.1371/journal.pone.0050978.g001

25% of sampled trees were discarded as burnin before calculating posterior probabilities.

Phylogenies of the *Ty3/Ty3p* and *Ty1/Ty2* super-families were created using LTR sequences from multiple *Saccharomyces sensu stricto* species. Sequence similarity searches were performed on the genomes of *S. bayanus*, *S. castellii*, *S. kluyveri*, *S. kudriavzevii*, *S. mikatae*, *S. paradoxus*, *S. servazii* and *S. unisporus*. LTR sequences were extracted using WU-BLAST2 at SGD using the 3' LTRs of u11 (*Ty3*) and u23 (*Ty2*) as the query sequences. With the exception of the highly degenerate *Ty3p* LTR sequences in *S. cerevisiae*, hits were filtered to a minimum length of 280 bp and an E-value of 1×10^{-10} for inclusion in these alignments. For each super-family, LTR sequences from each species were first aligned in MUSCLE and preliminary phylogenies were created from the unedited alignments using RAxML with 100 rapid bootstrap replicates using the GTRCAT model. These preliminary phylogenies were used to identify short branch (presumably recently active) sequences that spanned the diversity of active elements from each species for inclusion in the multi-species alignment. The final multispecies datasets were aligned using MUSCLE and maximum likelihood phylogenies were created following the same protocol as used for the individual *S. cerevisiae* Ty families. MrBayes analyses were also performed, running for 5,000,000 generations, a sampling frequency of 100 and with a burnin of 12,500, using the same protocol as for the individual Ty families. Nexus files for the *Ty3/Ty3p* and *Ty1/Ty2* super-family alignments can be found in File S4 and S5, respectively.

For the *Ty1/Ty2* superfamily the total number of hits from *S. mikatae* was 145, of which 44 were excluded on the basis of their long-branch length. LTR sequences of full-length *Ty1* elements from *S. cerevisiae* (excluding the recombinant *Ty1/Ty2* hybrid elements) were added to the dataset, as were LTR sequences of *Ty2* from *S. cerevisiae* (excluding the long branch elements s304, st39, st3, st97, st98 and st107). For the *Ty3* super-family, the *Ty3p* LTRs from *S. cerevisiae* were restricted to the seven longest sequences (which had a minimum length of 175 bp).

Molecular Evolutionary Analyses of Paralogous LTR Sequences

Phylogenetic trees were inspected and used to classify individual elements in the reference genome manually as being derived from 'active' or 'inactive' clades. Short-branch LTRs from clades with full-length elements were classified as active irrespective of whether the insert was itself still capable of transposition (e.g. a short-branch solo LTR from a recent intra-element recombination event would be classified as being in an active clade). LTRs present on long branches were classified as being in inactive clades. Separate alignments were created for all, inactive and active paralogous LTR sequences using MUSCLE, with only the 5' LTR included from full-length elements containing both LTRs. An archive of all

the paralogous LTR alignments used for molecular evolutionary analysis can be found in File S6.

Nucleotide diversity between paralogous LTRs in the three datasets (all, inactive and active) for each family was determined in DnaSP 5.1 [48] using π [49] and θ [50]. Tajima's *D* [51] was calculated from the alignments of active elements to detect departures from expected patterns of nucleotide diversity under a standard neutral model of sequence evolution with families that have a constant rate of insertion that are at copy number and coalescent equilibrium [52–54].

Recombination events between recently active elements were identified with two datasets using Hudson and Kaplan's *R_M* [55]. First, the minimum number of recombination events (*R_M*) was determined for all full-length elements for *Ty1*, *Ty2* and *Ty4*. Second, we determined *R_M* for all LTR sequences of active elements for *Ty1*, *Ty2*, *Ty3* and *Ty4*. This second dataset was constructed to increase the number of paralogous elements included in this analysis, albeit at the expense of sequence length. Because of limited data, *Ty3*, *Ty3p* and *Ty5* were excluded from analyses of recombination in full-length elements, and *Ty3p* and *Ty5* were excluded from analyses of recombination among recently active LTRs.

Population Genomic Analyses of Orthologous Ty Insertions

S. cerevisiae resequencing data was downloaded from the SGRP ftp site: <ftp://ftp.sanger.ac.uk/pub/dmc/yeast/latest/misc.tgz> (last modified on 20/9/08). Coordinates of re-annotated Ty elements in the sacCer2 reference genome were transferred to the coordinate system of the SGRP reference genome from the by extracting the entire insertion including ± 200 bp of flanking sequence from the sacCer2 genome and searching for an exact match in the SGRP reference genome. SGRP based coordinates were then used to extract multiple alignments of sequenced nucleotides prior to imputation using alicat.pl (option: q40). The *S. cerevisiae* strains involved were: 273614N, 322134S, 378604X, BC187, DBVPG1106, DBVPG1373, DBVPG1788, DBVPG1853, DBVPG6040, DBVPG6044, DBVPG6765, K11, L_1374, L_1528, NCYC110, NCYC361, RM11_1A, S288c, SK1, UWOPS03_461_4, UWOPS05_217_3, UWOPS05_227_2, UWOPS83_787_3, UWOPS87_2421, W303, Y12, Y55, Y9, YIIc17_E5, YJM789, YJM975, YJM978, YJM981, YPS128, YPS606, YS2, YS4, YS9. Resulting multiple alignments were viewed in Seaview 3.2 [56] and each Ty insertion was manually classified as present, absent or missing data for all 38 strains of *S. cerevisiae*. Insertion sites were then classified as fixed (scored as present or missing data in all genomes), polymorphic (scored as both present and absent in genomes with data), or S288c-only (found only in the S288c reference genome). Alignments of

population genomic data in the SGRP strains for each *Ty* insertion can be found in File S7.

Results

Re-evaluation of TE Content and Copy Number in the S288c Reference Genome

We reannotated *Ty* elements in the reference *S. cerevisiae* genome and found a total of 483 *Ty* element insertions (Table 1; Files S2 and S3), which is ~46% higher than the estimate of 331 by Kim *et al.* [22]. Increased copy number is observed for all five previously annotated *Ty* families, but is greatest for the most abundant family *Ty1* (Table 1). Our reannotation uncovered 406,829 bp of DNA (3.35%) in the *S. cerevisiae* reference genome that was of recognisable *Ty* element origin. This value is only ~30 kb greater than the estimate of Kim *et al.* [22], indicating that the majority of previously unannotated *Ty* insertions we identify are small fragments. The majority of the 152 new insertions identified here are degenerate solo LTRs, reinforcing the findings of Kim *et al.* [22] that full-length elements only make up a small proportion of *Ty* insertions in *S. cerevisiae*.

Fifteen of the newly annotated inserts were identified by including *Ty3p* (a *Ty3* family from *S. paradoxus* [32]) as a query. Evidence for *Ty3p* sequences in the *S. cerevisiae* genome has not previously been reported, although a solo LTR (YNLWsigma2) previously annotated as a *Ty3* insertion by Kim *et al.* [22] on chromosome XIV corresponds to a copy of *Ty3p*, s349, found here. *Ty3p* insertions are present only as solo LTRs in *S. cerevisiae* (Table 1) and thus, like *Ty5*, this lineage is comprised entirely of non-functional insertions in *S. cerevisiae*. We do not believe that the *Ty3p* sequences we detect in *S. cerevisiae* are simply ancient copies from the *Ty3* lineage, since a phylogeny of the *Ty3* super-family (Figure 2) across the *Saccharomyces* genus showed that *Ty3* and *Ty3p* are distinct lineages that are separated by strongly supported branches (maximum likelihood bootstrap percentage, mlBP \geq 70%, Bayesian inference posterior probability, biPP \geq 0.95). The *S. cerevisiae* *Ty3* elements form a sister-group with the *Ty3* sequences of *S. mikatae*, while the highly degenerate *S. cerevisiae* *Ty3p* insertions are found in a well-supported clade with the *Ty3p* sequences of *S. paradoxus* and *S. kudriavzevii*. Furthermore, both *Ty3* and *Ty3p* lineages are present and recently active in *S. kudriavzevii* suggesting that these are indeed distinct lineages. These results are consistent with the origin of the *Ty3p* family in *S. cerevisiae* by horizontal transfer (see below), and justify treatment of the *S. cerevisiae* *Ty3p* as a distinct family in the following analyses.

We identified only one additional full-length element, a *Ty1* element (u19, on chromosome XII) relative to the SGD annotation of *Ty* elements on the sacCer2 genome. Examination of this region of Chromosome XII reveals a 5,926 bp element that possesses 338 bp LTRs and encodes putative TYA (Gag) and TYB (Pol) proteins. This insertion was erroneously annotated in the sacCer2 SGD annotation as two solo LTRs (YLRCdelta2 and YLRCdelta3) [22].

Kim *et al.* [22] classified all *Ty* insertions either as full-length or solo LTRs. Our re-annotation also identified a new class of five “truncated” elements generated through deletions of genomic DNA rather than LTR-LTR recombination. Three of the truncated elements (t41, t120 and t194) were identified previously as solo LTRs [22] while the other two truncated elements (t219 and t220), which both lack any LTR sequence, have not been identified previously.

Molecular Evolution of Paralogous *Ty* LTR Sequences

Variation among paralogous sequences of *Ty* elements in the *S. cerevisiae* reference genome allows indirect observations to be made of element activity using both phylogenetic and molecular evolutionary approaches. Recently transposed elements are unlikely to have accumulated a large number of mutations that differentiate them from their parental element; therefore recently active TEs are expected to exhibit short branches in phylogenetic trees generated from paralogous LTRs in a single genome. Likewise, active TE families that have undergone a recent increase in copy number will harbour an excess of sequence differences between paralogous copies that are at low frequency in the sample, resulting in a negative value of the Tajima’s *D* statistic [53,54]. This pattern is analogous to the signature of recent population growth in population genetic analyses of an orthologous loci [51]. Finally, patterns of molecular variation that arise from genetic exchange can be used to detect gene conversion or recombination between paralogous *Ty* sequences in the past. Results for these three approaches are presented below to infer aspects of the evolutionary history for each *Ty* family.

Ty1

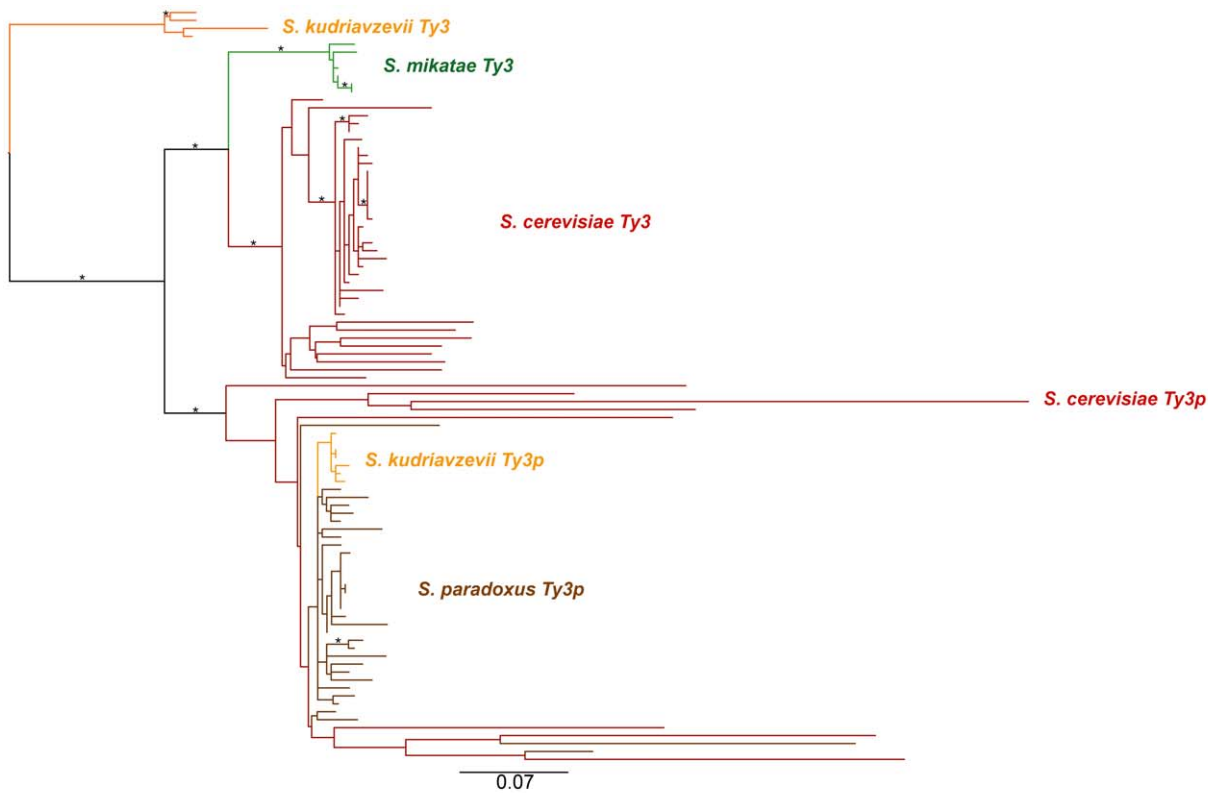
Ty1 has a much higher copy number ($n = 313$) than all other *Ty* families present in the *S. cerevisiae* genome (Table 1; see also [22]). Long branch, presumably inactive, insertions make up the majority (~87%, $n = 272$; Table 2) of *Ty1* insertions; these are exclusively solo LTRs (Figure 3). Short branch, presumably active *Ty1* elements cluster together on the phylogeny, suggesting that all

Table 1. Copy numbers and fixation status of *Ty* families within the *S. cerevisiae* genome.

Family	Total	Full-length	Truncated	Solo LTR	Polymorphic	Fixed	Percentage Fixed
<i>Ty1</i>	313 (217)	32 (32)	2 (0)	279 (185)	48 (4)	265	84.7
<i>Ty2</i>	46 (34)	13 (13)	2 (0)	31 (21)	35 (1)	11	23.9
<i>Ty3</i>	45 (41)	2 (2)	0 (0)	43 (39)	22 (1)	22	48.9
<i>Ty3p</i>	15 (0)	0 (0)	0 (0)	15 (0)	1 (0)	14	93.3
<i>Ty4</i>	49 (32)	3 (3)	1 (0)	45 (29)	18 (0)	31	63.3
<i>Ty5</i>	15 (7)	1 (1)	0 (0)	14 (6)	2 (0)	13	86.7
Total	483 (331)	51 (51)	5 (0)	427 (280)	127 (6)	356	73.7

Full-length elements are defined as those that possess both LTRs; truncated elements have lost one LTR and/or internal DNA through deletion other than LTR-LTR recombination; solo LTRs are generated through intra-element LTR-LTR recombination and can be complete or partial LTR sequences. Numbers in parentheses for the total, full-length, truncated and solo LTR columns are those reported in Kim *et al.* [22]. Fixed elements are those where a particular insertion was present in all scorable SGRP genomes. Numbers in parentheses for the polymorphic column indicate the number of insertions that could only be found in the S288c reference genome.

doi:10.1371/journal.pone.0050978.t001



Ty3/Ty3p Superfamily

Figure 2. Maximum likelihood phylogeny of LTR sequences from the Ty3/Ty3p super-family within *Saccharomyces sensu stricto*. The phylogeny was created from 983 aligned nucleotide positions. The branches are colour-coded based on the species labelled on the phylogeny. Individual sequence names have been omitted. Branches are drawn to scale and the bar represents the number of nucleotide substitutions per site. A “*” denotes branches with both mlBP $\geq 70\%$ and biPP ≥ 0.95 support. doi:10.1371/journal.pone.0050978.g002

such elements have a recent common ancestry. There are a total of 41 *Ty1* elements that appear to have inserted recently into the reference genome (Table 2, Figure 3). Eight of these young elements have subsequently undergone intra-element LTR-LTR recombination to become solo LTRs.

The phylogeny also supports subdivision of the active *Ty1* lineages into three previously proposed subfamilies [22,23] that we refer to as “canonical” *Ty1*, *Ty1'* and *Ty1/Ty2* (Figure 3). The majority of *Ty1* insertions are from the canonical, presumably ancestral, subfamily. In the clade containing the active canonical class, there are fourteen full-length elements and one solo LTR. The *Ty1'* subfamily [22] is characterised by its highly divergent *gag* ORF. In addition to the three full-length elements described by Kim *et al.* [22], we identify a further five solo LTRs in the *Ty1'* subfamily. The *Ty1* phylogeny also supports a clade of 18 recombinant *Ty1/2* elements [23], which fall into two distinct groups. The maximum likelihood tree places five long-branch solo LTRs within the *Ty1/2* clade (shown as collapsed red clades in Figure 3), however their positions are not strongly supported and they are not recovered in this position in the Bayesian tree (data not shown). Fourteen of the *Ty1/2* elements have previously been described and the approximate sites of recombination mapped [23,57]. The newly identified hybrid elements appear to show the same recombination breakpoints (File S8).

LTR sequences of the active *Ty1* elements harbour greater nucleotide diversity in comparison to the LTRs of active elements from other families (Table 2). Tajima’s *D* for the active *Ty1*

elements is positive, rather than negative (Table 2). It is unlikely that this result is due to a recent contraction in the number of elements within the genome; the phylogeny strongly suggests that *Ty1* is currently transposing in *S. cerevisiae*, a result confirmed in numerous studies (e.g. [58,59]). A more probable explanation is the presence of multiple active *Ty1* subfamilies (see above, Figure 3). This phylogenetic sub-structure (like population subdivision) will result in intermediate frequency polymorphisms in the total population of active elements, leading to a positive value of *D* among paralogous *Ty1* elements within the reference genome. Separate alignments of only canonical, *Ty1'*, or *Ty1/2* elements however all exhibit a negative value for Tajima’s *D* (data not shown), consistent with their recent transposition.

Patterns of sequence diversity provide evidence for recombination between the full-length *Ty1* copies that have integrated into the genome, with a minimum of 41 recombination events occurring between the 32 full-length elements. These results are consistent with recombination among paralogous sequences occurring at low frequency [60].

Ty2

The total copy number of *Ty2* ($n = 46$) is similar to those of *Ty3* ($n = 45$) and *Ty4* ($n = 49$), but substantially lower than *Ty1* (Table 1). The *Ty2* phylogeny is poorly resolved under both maximum likelihood and Bayesian inference methods (Figure 4). Unlike *Ty1*, *Ty3* and *Ty4* there is no clear separation of long-branch, inactive elements and short branch, putatively active

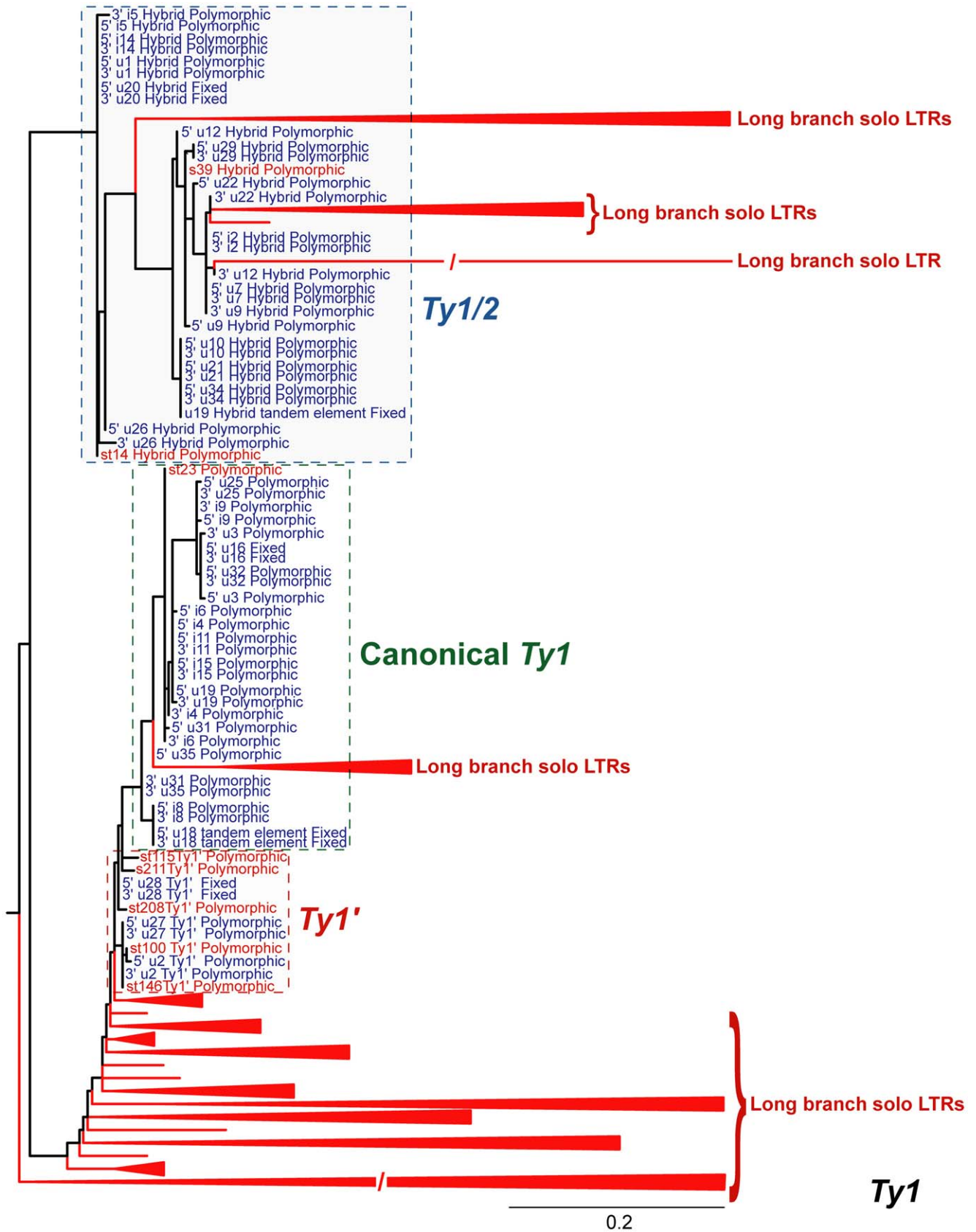


Figure 3. Maximum likelihood phylogeny of *Ty1* LTR sequences from the reference genome of *S. cerevisiae*. The phylogeny was created from 731 aligned nucleotide positions. LTRs in red are from partial elements and are no longer capable of autonomous transposition; LTRs in blue are from full-length elements and denoted as being from the 5' or 3' end of the element. Canonical, *Ty1'* and hybrid *Ty1/2* elements are boxed in green,

red and blue, respectively. Clades composed entirely of inactive elements have been collapsed and labelled “Long branch solo LTRs”, while recently active solo-LTRs are individually named. Branches are drawn to scale and the bar represents the number of nucleotide substitutions per site. A “/” denotes arbitrarily shortened branches and a “*” denotes branches with both mlBP $\geq 70\%$ and biPP ≥ 0.95 support. doi:10.1371/journal.pone.0050978.g003

elements. There are nine long-branch solo LTRs in the phylogeny, which are presumably older inserts, however they do not cluster together. The remaining 35 inserts are present on short branches and appear to have recently integrated. Intra-element LTR-LTR recombination or truncation has converted 23 of the 35 recently integrated copies to solo LTRs.

Consistent with a poorly resolved phylogeny, *Ty2* elements have diverged less in comparison to all other families in the *S. cerevisiae* genome. Recent common ancestry of most *Ty2* copies seems to be the most likely explanation of the poorly resolved phylogeny and relatively low nucleotide diversity in comparison to the other TE families in the genome (see below). A negative value of Tajima’s *D* is consistent with the recent arrival of *Ty2* elements in the *S. cerevisiae* genome (Table 2).

In spite of their recent origin, there is evidence that paralogous copies of *Ty2* are undergoing recombination, similar to *Ty1*. A minimum of 19 recombination events can be detected between the 13 full-length copies of *Ty2* and recently integrated *Ty2* LTR sequences also show evidence for three recombination events among paralogous copies.

Ty3

The 45 copies of *Ty3* exhibit lower levels of nucleotide diversity than most other families, with only copies of *Ty2* showing less variation (Table 2). The *Ty3* phylogeny exhibits long-branch, older inserts as well as a single clade containing putatively active elements (Figure 5). Nested among the short branch, younger inserts are two clades of long branch LTRs. The placements of the two long branch clades have no support (mlBP $<50\%$, biPP <0.70), are not supported by the Bayesian phylogeny, and their placement in the tree are most likely to be phylogenetic artefacts.

The active clade of *Ty3* (excluding the long branch LTRs) is composed of 24 inserts and shows the lowest nucleotide diversity of all the active *Ty* lineages. Tajima’s *D* calculated from the alignment of LTRs from this clade is negative, consistent with this group of elements having undergone a recent expansion (Table 2). Although this clade has recently been active there are only two full-length, and therefore potentially transpositionally competent, elements in the reference genome. The remainder of the inserts within this clade are solo LTRs, suggesting a high rate

of intra-element LTR-LTR recombination for this family. The proportion of solo LTRs seen in the active *Ty3* lineage is not significantly different to that seen in the active lineage of *Ty4* elements (Fisher’s exact test; $P=0.36$), however it is significantly higher than both *Ty1* ($P<0.0001$) and *Ty2* ($P<0.0001$).

As there are only two full-length copies of *Ty3* in the reference genome, it was not possible to detect any possible recombination events between full-length paralogues. Nucleotide sequences of the recently inserted copies of *Ty3* do not show any evidence of recombination between the LTR sequences at paralogous sites.

Ty3p

The 15 copies of the new *Ty3p* family we report here are only present as highly degenerate solo LTRs (Table 1). This family also harbours the highest level of nucleotide diversity among paralogous copies in the reference genome (Table 2). In addition, no copies of *Ty3p* are present on short branches in the combined *Ty3* and *Ty3p* phylogeny (Figure 5), highlighting a lack of recent transposition for this family. Together, these features indicate that *Ty3p* is an ancient component of the genome that lost the ability to transpose in *S. cerevisiae* long ago. Because there are no LTRs from full-length elements for this family, we did not perform recombination analyses for *Ty3p*.

Ty4

The phylogeny of the 49 *Ty4* insertions shows a single, well-supported (72% mlBP, 0.77 biPP) recently active lineage of 16 insertions with the remainder of the 33 LTR sequences being present on long, poorly supported branches (Figure 6). Only three of the insertions from the recently active clade are present as full-length copies in the reference genome, since the remainder have undergone LTR-LTR recombination. Tajima’s *D* is negative for the active clade of *Ty4* (Table 2), consistent with recent transposition for this group of elements. Hudson and Kaplan’s R_M failed to find any evidence of recombination between the full-length copies of *Ty4* or between the active LTR sequences of this family.

Ty5

Phylogenetic analysis of the 15 *Ty5* insertions revealed the absence of a putatively active clade for this family, suggesting that

Table 2. Patterns of nucleotide diversity among paralogous LTR sequences within *Ty* families in the *S. cerevisiae* genome.

Family	All			Inactive			Active			Tajima’s <i>D</i>	Mean Terminal Branch Length (subs/site \pm S.D.)	
	n	π	θ	n	π	θ	n	π	θ		Fixed	Polymorphic
<i>Ty1</i>	313	0.300	0.308	272	0.321	0.314	41	0.076	0.054	1.176	0.210 \pm 0.151	0.020 \pm 0.062
<i>Ty2</i>	44	0.046	0.088	9	0.119	0.142	35	0.025	0.029	-0.900	0.044 \pm 0.091	0.003 \pm 0.011
<i>Ty3</i>	45	0.116	0.173	21	0.192	0.218	24	0.019	0.035	-1.878	0.212 \pm 0.165	0.005 \pm 0.007
<i>Ty3p</i>	15	0.397	0.349	15	0.411	0.351	0	-	-	-	0.374 \pm 0.120	0.359 \pm 0.032
<i>Ty4</i>	49	0.304	0.251	33	0.292	0.247	16	0.021	0.027	-1.614	0.225 \pm 0.107	0.004 \pm 0.004
<i>Ty5</i>	15	0.332	0.262	15	0.322	0.256	0	-	-	-	0.143 \pm 0.208	0.046 \pm 0.064

The total number of *Ty2* insertions with LTRs here differs from total number of *Ty2* insertions in Table 1 since two truncated insertions lack LTRs. These are indicated by “n.a.” in File S2.

doi:10.1371/journal.pone.0050978.t002

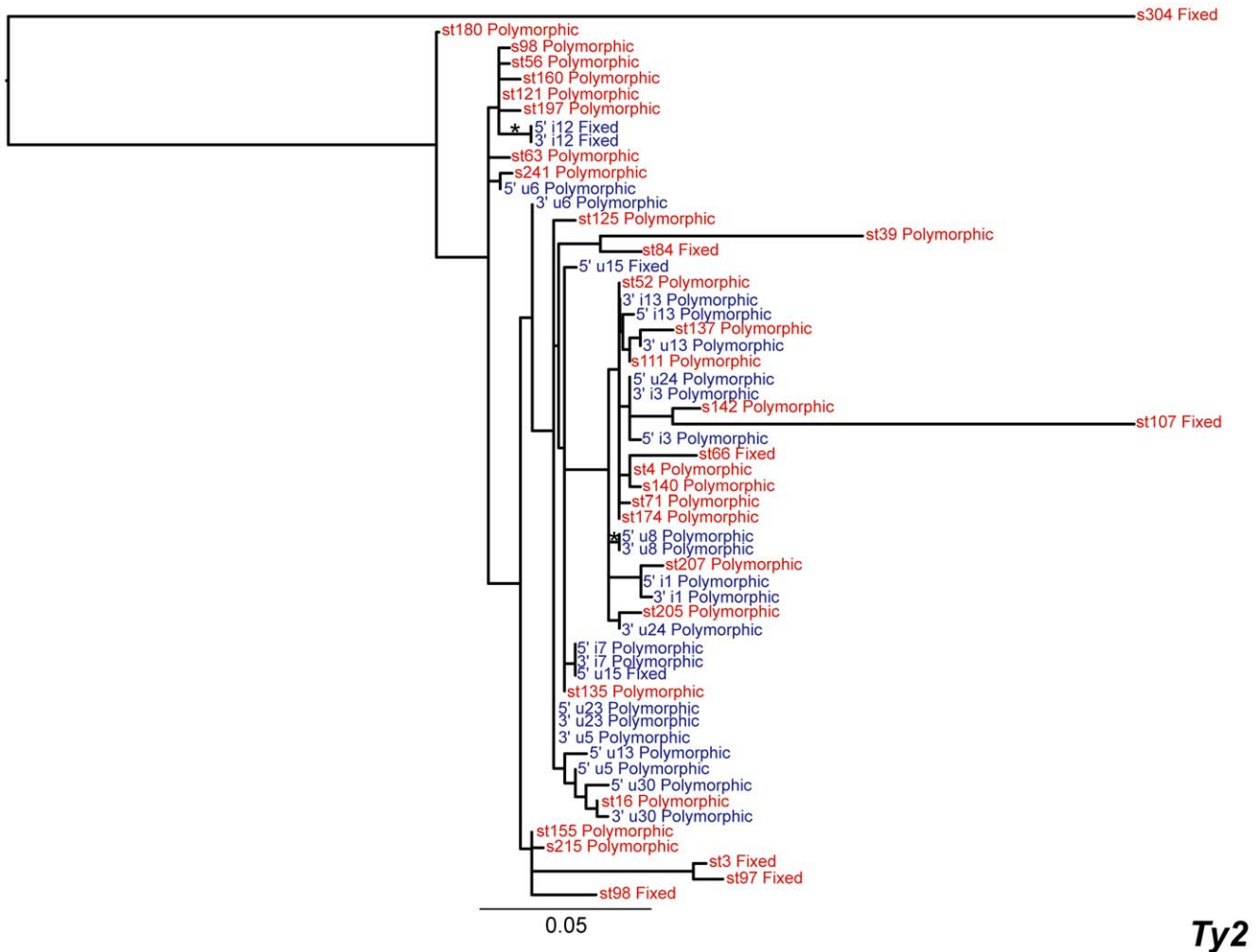


Figure 4. Maximum likelihood phylogeny of *Ty2* LTR sequences from the reference genome of *S. cerevisiae*. The phylogeny was created from 362 aligned nucleotide positions. Colour codes and nomenclature for LTRs are the same as in Figure 3, with the exception that no clades are composed entirely of inactive elements and so none have been collapsed. doi:10.1371/journal.pone.0050978.g004

there has been very little, if any, transposition of this family in the recent evolutionary history of *S. cerevisiae* (Figure 7). This result supports previous findings [61] and is reinforced by the fact that the only full-length copy of *Ty5* in the reference genome harbours internal deletions and the LTRs share 91% identity [19]. There are two identical *Ty5* solo LTRs on chromosomes IV and X (s49 and s261) that give rise to short branches in the phylogeny; however examination of their flanking DNA shows that they have arisen due to an inter-chromosomal segmental duplication rather than transposition, as has been observed previously for *Ty1* [22]. The same genomic duplication event also generated additional copies of the *Ty4* solo LTRs that flank the s49 and s261 *Ty5* fragments, since the *Ty4* inserts s50 and s260 are also present in the duplicated region. Because there are no LTRs from full-length elements for this family, we did not perform recombination analyses for *Ty5*.

Population Genomic Analyses of Ty Elements in 38 *S. cerevisiae* Strains

While important inferences about the history of *Ty* element activity such as those above can be made from a single reference genome, it remains an open question whether information in

reference genomes accurately represent the state of TE population dynamics within a species. To address this issue, all 483 *Ty* element insertions present in the reference genome were screened *in silico* for their presence or absence in whole genome reference-based alignments of the 37 other *S. cerevisiae* strains sequenced by the SGRP. Because we only use the actual, not imputed, sequence data from the SGRP alignments, the relevant segment of an SGRP strain can be missing due to the low-coverage nature of these shotgun sequences. The number of genomes with data available to score presence/absence of an insertion ranged from 2–37 per locus and, in total, 44% of alleles were classified as missing data across all strains and loci (see File S2). Because of the substantial degree of missing data, we did not attempt to analyze allele frequencies for each insertion and instead chose to classify *Ty* insertions as fixed, polymorphic or S288c-only. Polymorphic *Ty* insertions may be misclassified as S288c-only because of missing data in other strains, and thus both classes can be considered polymorphic.

Based on presence/absence data in the SGRP alignments, we estimate that 73.7% (356/483) of the *Ty* elements in the reference genome are fixed (scored as present in all genomes with sequence data) in the *S. cerevisiae* population (Table 1). *Ty2* shows the lowest proportion of fixed elements (23.9%), consistent with most

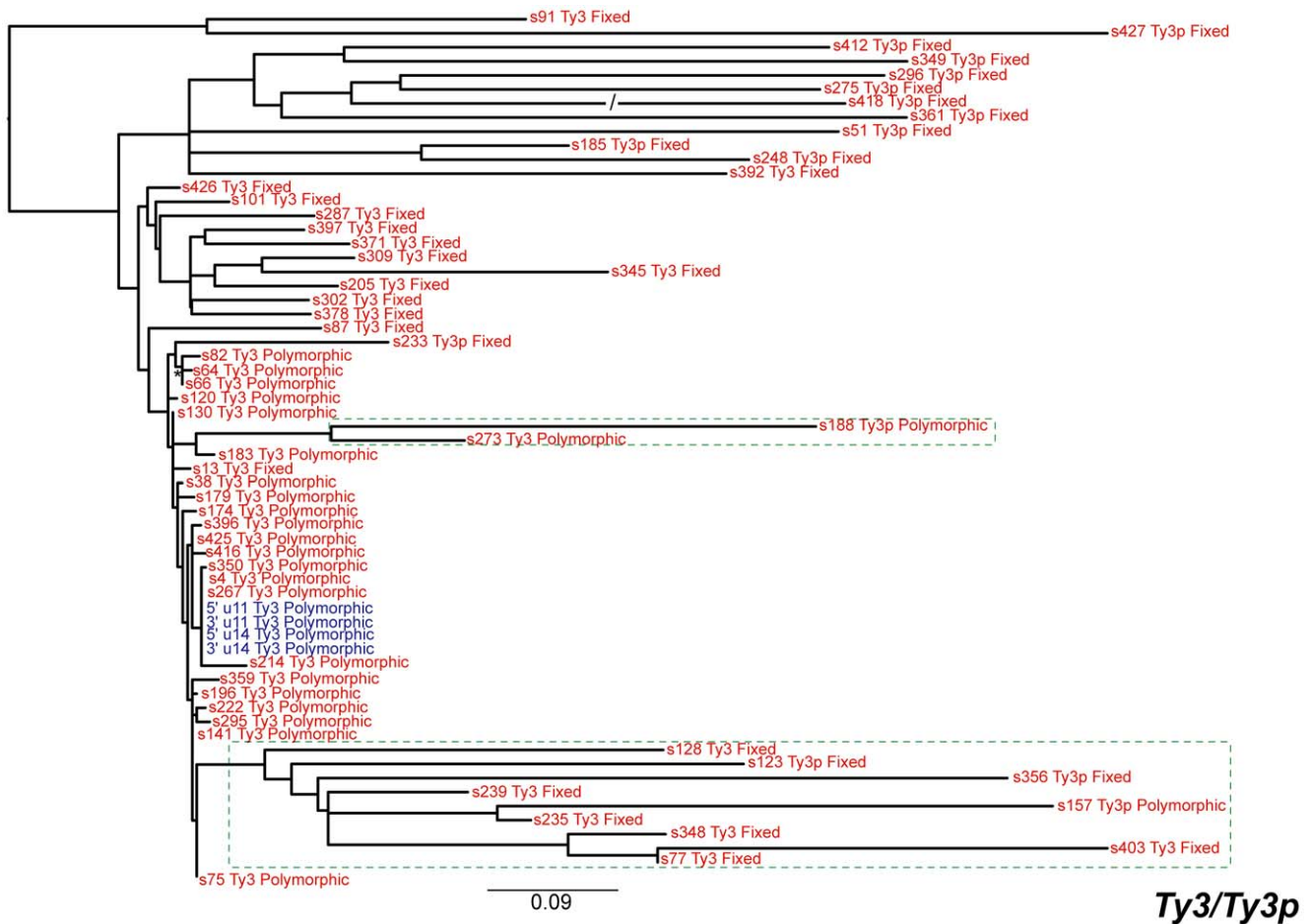


Figure 5. Maximum likelihood phylogeny of *Ty3* and *Ty3p* LTR sequences from the reference genome of *S. cerevisiae*. The phylogeny was created from 625 aligned nucleotide positions. Green boxes highlight long-branch clades whose positions among the short-branch, younger elements are probably phylogenetic artefacts since they found in different positions in the Bayesian analysis. Formatting of the tree is otherwise the same as in Figure 4.

doi:10.1371/journal.pone.0050978.g005

insertions from this family having recently integrated into the *S. cerevisiae* genome. Nearly half of the *Ty3* insertions are fixed (48.9%), and the majority of elements in the other *Ty* families are fixed. Fourteen of the fifteen *Ty3p* solo LTRs are fixed within the scored genomes. Only one copy appears to be polymorphic, but this is due to a post-fixation secondary deletion in the strain RM11_1A that covers the insertion site as well as the flanking DNA. Fixation of all *Ty3p* insertions is consistent with lack of recent transposition for this family in the *S. cerevisiae* genome. Previous studies have reported a lack of *Ty5* in some strains of *S. cerevisiae* [34,61]; our *in silico* screen of the SGRP genomes however shows that *Ty5* copies are predominantly fixed, with only two segregating inserts present in the reference genome. The two polymorphic inserts are both solo LTRs and are adjacent to each other, albeit on different strands, on Chromosome V.

We mapped polymorphism or fixation states of each insert onto the LTR phylogenies, which showed that most of the long-branch, inactive inserts are fixed within the population. In contrast, almost all of the inserts in the putatively active clades are polymorphic (Figures 3, 4, 5, 6, 7). This result demonstrates that both terminal branch lengths estimated from phylogenies of paralogous LTRs and fixation status of insertions estimated from population genomic data provide consistent inferences about the history of individual *Ty* insertions in *S. cerevisiae*. The mean terminal branch

lengths of fixed elements for *Ty1*, *Ty2*, *Ty3* and *Ty4* are an order of magnitude or more greater than the mean terminal branch lengths of polymorphic inserts (Table 2). The mean terminal branch length for fixed copies of *Ty1*, *Ty3* and *Ty4* are of a similar scale, suggesting that they have been components of the *S. cerevisiae* genome for a similar length of time. In contrast, fixed copies of *Ty2* show considerably shorter terminal branch lengths, which is consistent with a more recent origin of *Ty2* in *S. cerevisiae*.

Horizontal Transfer Explains the Existence of Closely Related Ty Families in *S. cerevisiae*

Two contrasting models can be put forward to explain the existence of closely related *Ty* families (like *Ty1* and *Ty2*, or *Ty3* and *Ty3p*) in the *S. cerevisiae* genome [22]. The first model proposes that closely-related families are sub-lineages of an ancestral super-family that evolved by vertical transmission and TE “speciation” within *S. cerevisiae* or its ancestor. Evidence for distinct, active subfamilies of *Ty1* in *S. cerevisiae* support the plausibility of the TE speciation model (Figure 3).

The second model proposes that closely-related families are sub-lineages of the same super-family that arose in different *Saccharomyces* species and subsequently came together in *S. cerevisiae* or its ancestor by horizontal transfer [22,34]. In the case of *Ty1*

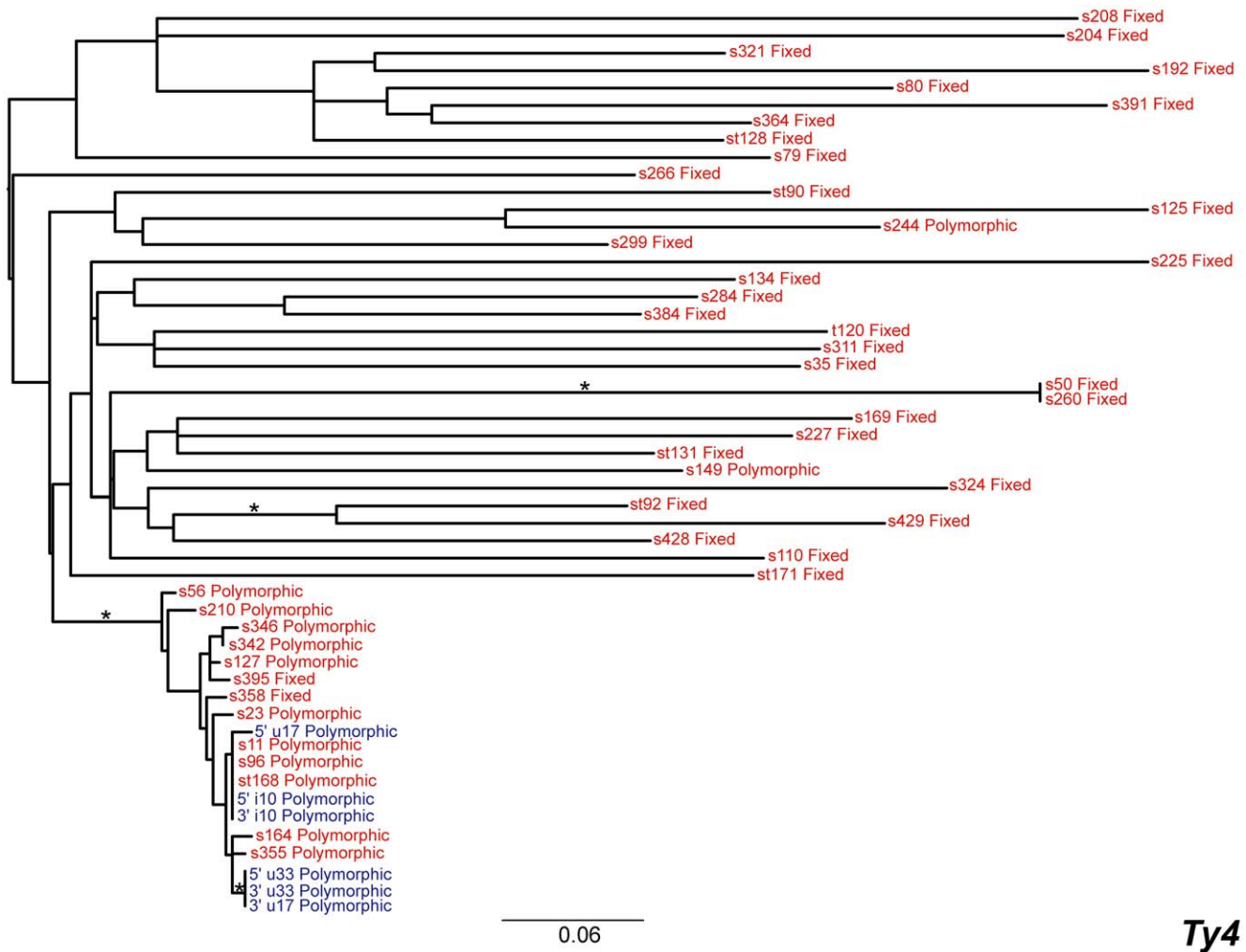


Figure 6. Maximum likelihood phylogeny of *Ty4* LTR sequences from the reference genome of *S. cerevisiae*. The phylogeny was created from 450 aligned nucleotide positions. Formatting of the tree and labels is the same as in Figure 4. doi:10.1371/journal.pone.0050978.g006

and *Ty2*, support for the horizontal transfer model comes from the fact that some *Saccharomyces* species (e.g. *S. paradoxus* and *S. bayanus*) appear to have only *Ty1* but not *Ty2* elements [62], while *S. mikatae* appears to have only *Ty2* but not *Ty1* elements [63]. Furthermore, Liti *et al.* [34] noted that *Ty2* is present in *S. mikatae* but not in species more closely related to *S. cerevisiae*, and that *Ty2* from *S. cerevisiae* and *S. mikatae* share a high level of nucleotide identity. These observations led Liti *et al.* [34] to propose a horizontal transfer of *Ty2* between *S. cerevisiae* and *S. mikatae*, but based on available data these authors could not determine the direction of any putative horizontal transfer event.

The low degree of nucleotide diversity observed here in *Ty2* is consistent with a recent invasion of the *S. cerevisiae* genome by this family. Furthermore *Ty2* has a significantly lower proportion of both long-branch and fixed copies in comparison to other families, and its fixed copies exhibit a considerably shorter mean terminal branch length (Table 2). The recent origin of virtually all *Ty2* copies in *S. cerevisiae* and the absence of *Ty2* in *S. paradoxus* – other than in hybrid strains [34] – point to the direction of horizontal transfer being from *S. mikatae* to *S. cerevisiae*. To test this model, we conducted a phylogenetic analysis of active *Ty1* and *Ty2* LTR sequences from multiple *Saccharomyces sensu stricto* species (Figure 8). This analysis provides direct evidence that *Ty2* is not a subfamily

of the *S. cerevisiae Ty1* family, as the *Ty2* families of *S. cerevisiae* and *S. mikatae* robustly cluster together (92% mlBP, 0.97 biPP). The phylogeny nests the monophyletic *S. cerevisiae Ty2* elements within the *S. mikatae Ty2* elements, with strong support (74% mlBP, 0.97 biPP), providing clear evidence that the direction of the horizontal transfer was from *S. mikatae* to *S. cerevisiae*. The observed phylogeny is not simply the result of LTR swapping through recombination, as protein phylogenies of *Gag* and a 300 amino acid residue region of *Pol* both show that the *S. cerevisiae Ty2* is more closely related to *Ty2* of *S. mikatae* than *S. cerevisiae Ty1* (data not shown).

Support for horizontal transfer as the primary explanation to understand the existence of closely related *Ty* families within a yeast species is also found in our *Ty3/Ty3p* superfamily analysis (Figure 2). However, the observation of distinct *Ty3* and *Ty3p* lineages in *S. cerevisiae* and *S. kudriavzevii* is compatible with several possible scenarios involving horizontal transfer. Under one scenario, a single *Ty3* family would have arisen in the ancestral *Saccharomyces* species with vertical transmission leading to a single *Ty3*-like family in most species except *S. cerevisiae* and *S. kudriavzevii*, which have two *Ty3*-like families due to horizontal transfer events: (i) one unsuccessful transfer of *Ty3p* from *S. paradoxus* to *S. cerevisiae* and (ii) one successful transfer of *Ty3p* from *S. paradoxus* to *S. kudriavzevii*. Alternatively, the presence of *S. cerevisiae* and *S.*

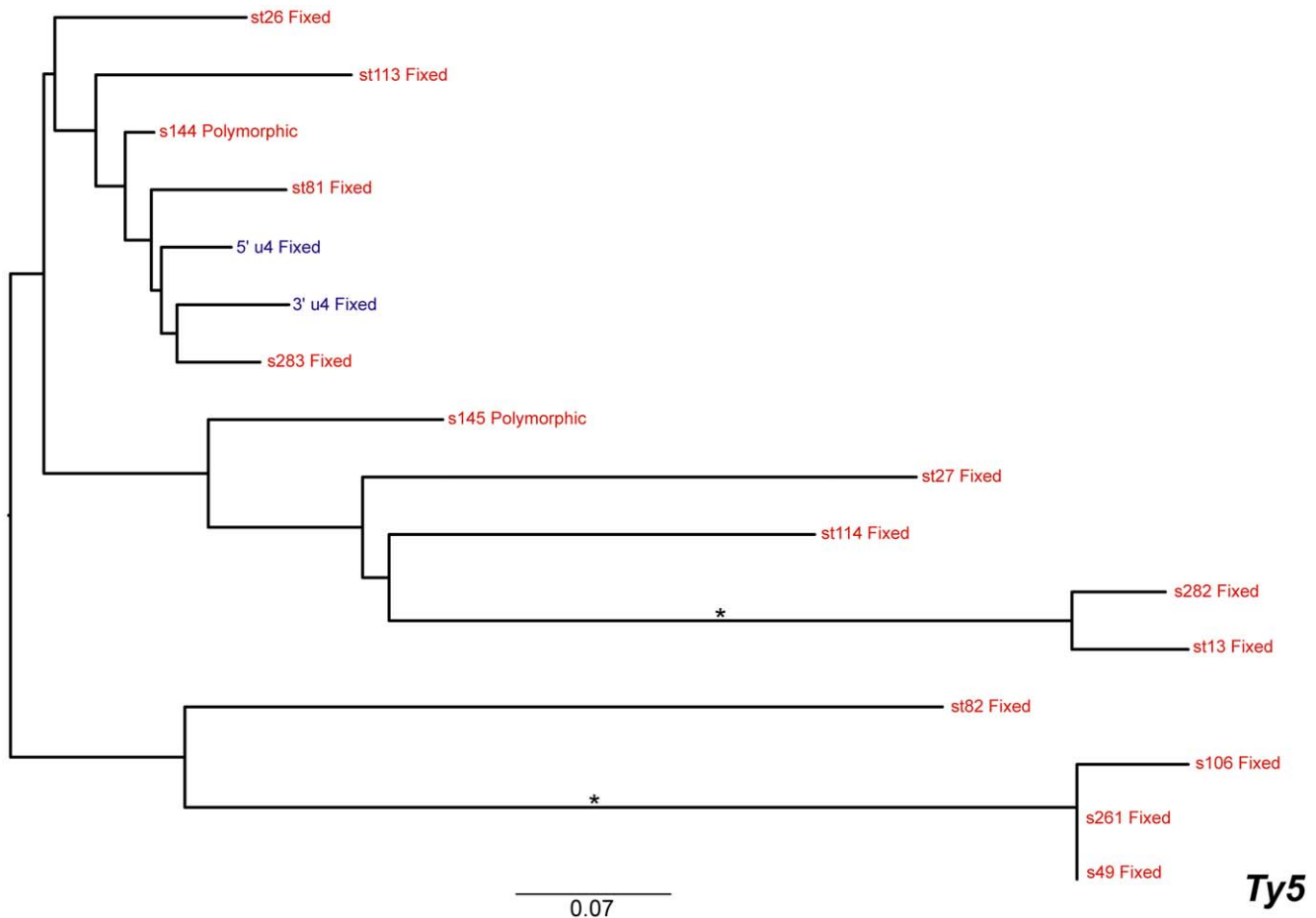


Figure 7. Maximum likelihood phylogeny of *Ty5* LTR sequences from the reference genome of *S. cerevisiae*. The phylogeny was created from 268 aligned nucleotide positions. Formatting of the tree and labels is the same as in Figure 4. doi:10.1371/journal.pone.0050978.g007

kudriavzevii could be explained by speciation of the *Ty3*-like ancestor into *Ty3* and *Ty3p* along the lineage leading to *S. kudriavzevii*, an ancient horizontal transfer of the *S. kudriavzevii* *Ty3p* family into the ancestor of *S. cerevisiae* and *S. paradoxus*, followed by inactivation of *Ty3p* in *S. cerevisiae* and complete loss of *Ty3* in *S. paradoxus*. Several other plausible alternatives that require at least one horizontal transfer event can also be formulated. Evaluation of which scenario can best explain the data will require further systematic genomic analysis in multiple *Saccharomyces* species. We note however that, while at face value our conclusion that *Ty3* has undergone horizontal transfer seems to contradict previous claims [32], our results are in fact compatible with the data of Fingerman *et al.* [32] which only support a long-term association of *Ty3*-like lineages in the *Saccharomyces* genus, but do not actually preclude the possibility of horizontal transfer events within the genus.

Discussion

The transposable elements of *S. cerevisiae* represent the most comprehensively investigated set of TEs studied at the genomic level within the eukaryotes. However our current understanding of evolutionary trends within *Ty* elements is predominantly based on research conducted at the end of the last century using data from a single reference genome [22,23,30,64]. Furthermore, previous studies focussed almost exclusively on a subset of families (namely *Ty1* and *Ty2*), and essentially no inferences have been drawn about

the history of the smaller families (*Ty3*, *Ty3p*, *Ty4* and *Ty5*) (but see [30]). With more sophisticated bioinformatic techniques now available to study TEs in genome sequences [65], as well as population and comparative genomic data from multiple *Saccharomyces* strains and species [27,66,67], it is an opportune time to re-evaluate the evolution of *Ty* elements in *S. cerevisiae*. The analyses performed here have shown that many of the ideas on TE evolution in *S. cerevisiae* require substantial revision.

Our high-resolution re-annotation of *Ty* elements presented here reveals that the original survey of *Ty* elements in the *S. cerevisiae* genome underestimated copy number by almost 50% [22]. Kim *et al.* [22] used cutoffs that allowed the identification of all full-length elements in the reference genome, but omitted a large number of additional partial elements that we have detected with improved bioinformatic methods and a refined library of *Ty* sequences. One of the more surprising aspects of the re-analysis is the identification of a previously un-annotated family of LTR retrotransposons, *Ty3p*. In addition to improving the *S. cerevisiae* genome annotation and providing resources to shed light on the evolution of transposable elements, the additional *Ty* sequences found here have practical importance for efforts to engineer synthetic yeast chromosomes that lack destabilising sequences like *Ty* elements and tRNA genes [68].

Our results also suggest that some conclusions about the long-term co-evolutionary relationship of *Ty* elements with their host should be re-interpreted. Kim *et al.* [22] proposed that *Ty3* and

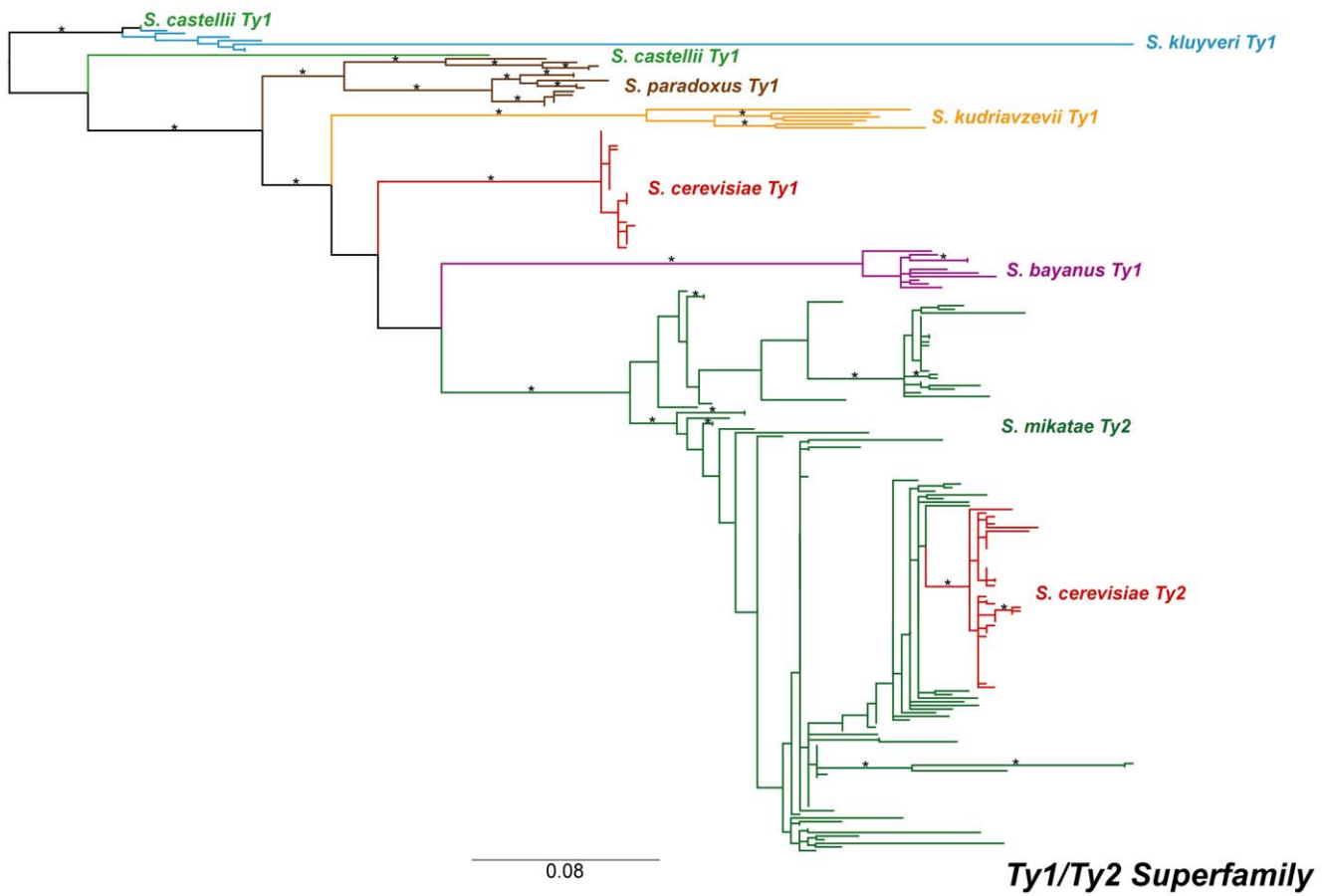


Figure 8. Maximum likelihood phylogeny of the *Ty1/Ty2* super-family within *Saccharomyces sensu stricto*. The phylogeny was created from 294 aligned LTR nucleotide positions. The branches have been colour coded based on the species from the LTRs were sequenced; species clades are labelled on the phylogeny. Individual sequence names have been omitted. Formatting of the tree and labels is the same as in Figure 2. doi:10.1371/journal.pone.0050978.g008

Ty4 may be recent arrivals in the *S. cerevisiae* genome, due to the low average nucleotide diversity that they observed in both families. In contrast, our phylogenetic analysis reveals long-branch, ancient lineages in these families indicating that both families are long-term inhabitants of the *S. cerevisiae* genome. *Ty3* and *Ty4* both also exhibit short-branch clades in their phylogenies providing evidence for the recent, and probably current, activity of these families in the *S. cerevisiae* population. This inference is supported by the negative value of Tajima's *D* for the putatively active lineages of *Ty3* and *Ty4*, which implies recent growth in the number of elements for these families within the yeast genome.

Our work also resolves controversy about the origin of the *Ty2* family, which has been proposed to have evolved either from a *Ty1*-like ancestor or arisen by horizontal transfer [22,34]. Both the lack of old copies of *Ty2* in the *S. cerevisiae* genome and the phylogenetic position within the *Ty1/Ty2* super-family are consistent with the recent horizontal transfer of this family, with *S. mikatae* the most probable donor species. The ability of *Saccharomyces sensu stricto* species to form viable hybrids naturally in the wild (reviewed in [69]) provides a simple mechanism for the horizontal transfer of TEs between species without the requirement of an intermediate vector. Interspecific hybrids typically show dramatically reduced fertility (reviewed in [69]), but viable gametes can be produced by interspecific hybrids [70–72] that can backcross with their parental species [72]. Moreover, several studies have reported naturally-occurring introgressions between

S. cerevisiae and *S. paradoxus* [73–76] demonstrating the successful transfer of genetic information between *Saccharomyces* species. If interspecific hybridisation is involved in the transfer of *Ty* families between *Saccharomyces* species it must be rare, since *Ty* element sequences are clearly not homogenized across yeast species [34].

The phylogenies presented here show that *Ty* families, with the exception of the inactive *Ty3p* and *Ty5*, contain clusters of short-branched elements that we consider to be the products of recent transposition events. However, the homogenizing effects of gene conversion can also lead to short branch lengths between paralogous copies of *Ty* elements, with branch lengths reflecting the time of the last gene conversion event rather than the last transposition event. It seems unlikely however that gene conversion, as opposed to recent transposition, is the cause of the short-branched clusters present in the LTR trees for several reasons. First, Kupiec and Petes [60] noted that gene conversion events occur at low frequency, suggesting that such a mechanism is not strong enough to homogenize the sequences within families in the genome. Second, the presence of ancient, highly divergent, elements in the genome, as well as three proliferating subfamilies of *Ty1*, also provides direct evidence that transposable element sequences can escape the action of gene conversion and diverge within the *S. cerevisiae* population. Third, the only two families that do not contain clusters of short branch elements, *Ty3p* and *Ty5*, are known to be incapable of transposition, but have no obvious impediment to gene conversion between paralogous copies. On

balance, it would appear that the phylogenies mainly represent the history of transposition within each family, rather than reflecting the action of widespread gene conversion.

The availability of genomic data from multiple *S. cerevisiae* strains means that studies on the evolution of *Ty* elements in this species are no longer limited to studies on a single reference genome. Our population genomic analyses show that, despite the assumed deleterious nature of most TE insertions, a surprisingly high percentage (73.7%) of *Ty* copies are fixed in *S. cerevisiae*. These results support previous work that has shown many *Ty* LTR sequences in *S. paradoxus* are fixed in natural populations [32,77], permitting their use as putatively unconstrained sequences in molecular evolutionary studies [77,78]. The vast majority (98%) of fixed *Ty* insertions are partial elements. The dearth of fixed full-length elements may be due in part to LTR-LTR recombination being a one-way process that occurs more rapidly than the sojourn time to fixation. However it is also likely that solo LTRs are less deleterious to their hosts [7], and are therefore more likely to go to fixation by drift. Regardless of the processes that lead to fixation, the fact that most *Ty* insertions are fixed suggests that the catalogue of *Ty* insertion sites discovered using the S288c reference genome describes the core state of most *Ty* element locations across strains in this species.

While our results show that the majority of *Ty* elements are likely to be fixed in *S. cerevisiae*, it is worth considering how our results would be affected by using other strains besides S288c strain for *Ty* element discovery. Discovery of *Ty* element locations using reference assemblies from other strains of *S. cerevisiae* besides S288c is likely to be biased toward finding fewer (or more highly fragmented) *Ty* elements, since repetitive sequences like TEs are often collapsed or present near gaps in draft assemblies. Moreover, previous work has shown that S288c has a higher proportion of *Ty* sequences than any other strain in the SGRP data set [27]. Therefore, population genomic analysis based on discovery of *Ty* elements using S288c as a reference strain is likely to survey a greater number of potential insertion sites than those based on other *S. cerevisiae* strains. Furthermore, it would not be possible to use the SGRP whole genome alignments as we have here to estimate polymorphism or fixation status of *Ty* elements using an alternative reference strain, since the SGRP alignments are reference-based and explicitly linked to the S288c genome. Future work using unassembled reads to identify de novo *Ty* element locations (e.g. [38]) and estimate allele frequencies will be needed to overcome the limitation of using draft assemblies and reference-based whole genome alignments in order to determine the generality of conclusions based on *Ty* element discovery in S288c.

While the majority of fixed elements are old *Ty* insertions, we have identified 33 young insertions that are segregating at high frequencies (≥ 0.50 , > 15 scored genomes) in sequenced *S. cerevisiae* strains (File S2), seven of which are full-length copies and 26 are solo LTRs. These insertions may be at high frequency due to drift or hitchhiking along with advantageous host alleles, but it is also possible that a number of these elements are positively selected. The LTRs of *Ty* elements contain multiple modifiers of transcription [25,79,80], and TEs are known to be able to alter the expression of neighbouring host genes [80,81]. However, none of the high frequency *Ty* insertions identified here correspond to a *Ty1* insertion previously reported to confer an adaptive change in gene expression of the *HAP1* gene [29,82]. Nevertheless, the high-frequency, young insertions identified here present a candidate set for further investigation into potential advantageous *Ty* insertions in *S. cerevisiae*.

By combining phylogenetic inferences with population genomic data on the presence or absence of *Ty* elements, our work provides

important confirmation that terminal branch lengths in phylogenetic trees provide information about the population frequency of individual insertions. Long branch inserts tend to be fixed in the *S. cerevisiae* genome, whereas short branch inserts mainly segregate at lower frequencies. This observation supports many previous studies (e.g. [7,22,83,84]) that rely on information from a single genome to make inferences about the dynamics of TE evolution in a given species. As we enter the era of widespread population-genomic resequencing, it will be of considerable interest to see how commonly this trend holds for LTR elements and other classes of TEs in the genomes and populations of other eukaryote species.

Supporting Information

File S1 Database of *Ty* element reference sequences used for re-annotation of the yeast genome. Fasta file of LTR and internal sequences from *Ty1-Ty5*, with the inclusion of *Ty3p* from *S. paradoxus*. (TXT)

File S2 Summary of the annotated *Ty* elements in the June 2008 version of *S. cerevisiae* genome from the UCSC Genome Database (sacCer2). Shown are the REANNOTATE identifier, genomic coordinates of the complete span of all fragments from an individual element, strand, name(s) of corresponding *Ty* elements from the SGD sacCer2 annotation, structural classification, activity status as determined by phylogenetic analysis, estimated allele frequency, and polymorphism/fixation status based on SGRP alignments. More specifically the status of *Ty* insertions in each SGRP alignment is classified as polymorphic or fixed, but *Ty* elements that are present only in the reference strain are labelled as S288c in this table and classified as polymorphic in subsequent analyses. Presence (1), absence (0) or missing data (n.a.) status is shown for individuals SGRP strains in columns following the “sgrp alignment status” column. REANNOTATE identifiers are comprised of the chromosome name, the insertion type, a numerical identifier and *Ty* family name. Insertion type can be full-length (i or u), truncated (t) or solo LTR (s or st). Insertions from the *Ty3p* family are labelled as TY3_1p according to RepBase nomenclature. (TXT)

File S3 GFF file of Repeatmasker/REANNOTATE *Ty* fragments in the June 2008 version of *S. cerevisiae* genome from the UCSC Genome Database (sacCer2). Individual fragments from the same element are given the same name in the ID column. The span of the union of fragments is the same as the range of coordinates given in File S2. (TXT)

File S4 Nexus file of aligned LTR sequences used for phylogenetic analysis of *Ty3/Ty3p* superfamily. Alignments of paralogous LTR sequence from the *Ty3/Ty3p* superfamily used to create the phylogeny in Figure 2. GenBank Accession Numbers are shown for sequences from species other than *S. cerevisiae*. (TXT)

File S5 Nexus file of aligned LTR sequences used for phylogenetic analysis of *Ty1/Ty2* superfamily. Alignments of paralogous LTR sequence from *Ty1/Ty2* superfamily used to create the phylogeny in Figure 8. Positions enclosed in square brackets were excluded from the phylogenetic analyses. GenBank Accession Numbers are shown for sequences from species other than *S. cerevisiae*. (TXT)

File S6 ZIP archive of LTR alignments used for molecular evolutionary analyses. Alignments of paralogous LTR sequence

from all, active and inactive elements are provided for *Ty1*, *Ty2*, *Ty3+Ty3p*, *Ty4* and *Ty5*, respectively. For full-length element only the 5' LTR was included. Also included are alignments of the *Ty3/Ty3p* superfamily and the *Ty1/Ty2* superfamily, respectively. Positions enclosed in square brackets were excluded from the phylogenetic analyses. GenBank Accession Numbers are shown for sequences from species other than *S. cerevisiae*. (ZIP)

File S7 ZIP archive of SGRP strain alignments used for population genomic analyses. Alignments of the orthologous genomic region in each SGRP strain corresponding to each *Ty* insertion in our re-annotation of the *S. cerevisiae* reference genome. N's represent low quality (<Q40 phred score) or missing data, primarily due to the low-coverage sequence of many SGRP strains. The DNA sequence of *sacCer2* is included as "REF" and each alignment includes the TE locus and 200 bp of DNA sequence on either side of the *Ty* insertion site. A dummy sequence shows the position of each TE in the alignment with "T"s. (ZIP)

References

- Pritham EJ (2009) Transposable elements and factors influencing their success in eukaryotes. *J Hered* 100: 648–655.
- Montgomery E, Charlesworth B, Langley CH (1987) A test for the role of natural selection in the stabilization of transposable element copy number in a population of *Drosophila melanogaster*. *Genet Res* 49: 31–41.
- Biemont C, Tsitrone A, Vicira C, Hoogland C (1997) Transposable element distribution in *Drosophila*. *Genetics* 147: 1997–1999.
- Charlesworth B, Langley CH, Sniegowski PD (1997) Transposable element distributions in *Drosophila*. *Genetics* 147: 1993–1995.
- Hollister JD, Gaut BS (2007) Population and evolutionary dynamics of Helitron transposable elements in *Arabidopsis thaliana*. *Mol Biol Evol* 24: 2515–2524.
- Song M, Boissinot S (2007) Selection against LINE-1 retrotransposons results principally from their ability to mediate ectopic recombination. *Gene* 390: 206–213.
- Carr M, Nelson M, Leadbeater BS, Baldauf SL (2008) Three families of LTR retrotransposons are present in the genome of the choanoflagellate *Monosiga brevicollis*. *Protist* 159: 579–590.
- Charlesworth B, Langley CH (1989) The population genetics of *Drosophila* transposable elements. *Annu Rev Genet* 23: 251–287.
- Daborn PJ, Yen JL, Bogwitz MR, Le Goff G, Feil E, et al. (2002) A single p450 allele associated with insecticide resistance in *Drosophila*. *Science* 297: 2253–2256.
- Darboux I, Charles JF, Pauchet Y, Warot S, Pauron D (2007) Transposon-mediated resistance to *Bacillus sphaericus* in a field-evolved population of *Culex pipiens* (Diptera: Culicidae). *Cell Microbiol* 9: 2022–2029.
- Schlenke TA, Begun DJ (2004) Strong selective sweep associated with a transposon insertion in *Drosophila simulans*. *Proc Natl Acad Sci U S A* 101: 1626–1631.
- Gonzalez J, Lenkov K, Lipatov M, Macpherson JM, Petrov DA (2008) High rate of recent transposable element-induced adaptation in *Drosophila melanogaster*. *PLoS Biol* 6: e251.
- Aminetzach YT, Macpherson JM, Petrov DA (2005) Pesticide resistance via transposition-mediated adaptive gene truncation in *Drosophila*. *Science* 309: 764–767.
- Bartolome C, Bello X, Maside X (2009) Widespread evidence for horizontal transfer of transposable elements across *Drosophila* genomes. *Genome Biol* 10: R22.
- Lerat E, Bulet N, Biemont C, Vicira C (2011) Comparative analysis of transposable elements in the melanogaster subgroup sequenced genomes. *Gene* 473: 100–109.
- Thomas J, Schaack S, Pritham EJ (2010) Pervasive horizontal transfer of rolling-circle transposons among animals. *Genome Biol Evol* 2: 656–664.
- Gilbert C, Schaack S, Pace JK 2nd, Brindley PJ, Feschotte C (2010) A role for host-parasite interactions in the horizontal transfer of transposons across phyla. *Nature* 464: 1347–1350.
- Goffeau A, Barrell BG, Bussey H, Davis RW, Dujon B, et al. (1996) Life with 6000 genes. *Science* 274: 546, 563–547.
- Voytas DF, Boeke JD (1992) Yeast retrotransposon revealed. *Nature* 358: 717.
- Kingsman AJ, Gimlich RL, Clarke L, Chinault AC, Carbon J (1981) Sequence variation in dispersed repetitive sequences in *Saccharomyces cerevisiae*. *J Mol Biol* 145: 619–632.
- Hani J, Feldmann H (1998) tRNA genes and retroelements in the yeast genome. *Nucleic Acids Res* 26: 689–696.
- Kim JM, Vanguri S, Boeke JD, Gabriel A, Voytas DF (1998) Transposable elements and genome organization: a comprehensive survey of retrotransposons revealed by the complete *Saccharomyces cerevisiae* genome sequence. *Genome Res* 8: 464–478.
- Jordan IK, McDonald JF (1998) Evidence for the role of recombination in the regulatory evolution of *Saccharomyces cerevisiae* Ty elements. *J Mol Evol* 47: 14–20.
- Hansen LJ, Sandmeyer SB (1990) Characterization of a transpositionally active Ty3 element and identification of the Ty3 integrase protein. *J Virol* 64: 2599–2607.
- Hug AM, Feldmann H (1996) Yeast retrotransposon Ty4: the majority of the rare transcripts lack a U3-R sequence. *Nucleic Acids Res* 24: 2338–2346.
- Wilke CM, Maimmer E, Adams J (1992) The population biology and evolutionary significance of Ty elements in *Saccharomyces cerevisiae*. *Genetica* 86: 155–173.
- Liti G, Carter DM, Moses AM, Warringer J, Parts L, et al. (2009) Population genomics of domestic and wild yeasts. *Nature* 458: 337–341.
- Blanc VM, Adams J (2004) Ty1 insertions in intergenic regions of the genome of *Saccharomyces cerevisiae* transcribed by RNA polymerase III have no detectable selective effect. *FEMS Yeast Res* 4: 487–491.
- Fraser HB, Moses AM, Schadt EE (2010) Evidence for widespread adaptive evolution of gene expression in budding yeast. *Proc Natl Acad Sci U S A* 107: 2977–2982.
- Jordan IK, McDonald JF (1999) Tempo and mode of Ty element evolution in *Saccharomyces cerevisiae*. *Genetics* 151: 1341–1351.
- Neueveglise C, Feldmann H, Bon E, Gaillardin C, Casaregola S (2002) Genomic evolution of the long terminal repeat retrotransposons in hemiascomycetous yeasts. *Genome Res* 12: 930–943.
- Fingerman EG, Dombrowski PG, Francis CA, Sniegowski PD (2003) Distribution and sequence analysis of a novel Ty3-like element in natural *Saccharomyces paradoxus* isolates. *Yeast* 20: 761–770.
- Moore SP, Liti G, Stefanisko KM, Nyswaner KM, Chang C, et al. (2004) Analysis of a Ty1-less variant of *Saccharomyces paradoxus*: the gain and loss of Ty1 elements. *Yeast* 21: 649–660.
- Liti G, Peruffo A, James SA, Roberts IN, Louis EJ (2005) Inferences of evolutionary relationships from a population survey of LTR-retrotransposons and telomeric-associated sequences in the *Saccharomyces sensu stricto* complex. *Yeast* 22: 177–192.
- Wheeler SJ, Scheifele LZ, Martinez-Murillo F, Irizarry RA, Boeke JD (2006) Transposon insertion site profiling chip (TIP-chip). *Proc Natl Acad Sci U S A* 103: 17632–17637.
- Gabriel A, Dapprich J, Kunkel M, Gresham D, Pratt SC, et al. (2006) Global mapping of transposon location. *PLoS Genet* 2: e212.
- Carreto L, Eiriz MF, Gomes AC, Pereira PM, Schuller D, et al. (2008) Comparative genomics of wild type yeast strains unveils important genome diversity. *BMC Genomics* 9: 524.
- Shibata Y, Malhotra A, Bekiranov S, Dutta A (2009) Yeast genome analysis identifies chromosomal translocation, gene conversion events and several sites of Ty element insertion. *Nucleic Acids Res* 37: 6454–6465.
- Mularoni L, Zhou Y, Bowen T, Gangadharan S, Wheeler S, et al. (2012) Retrotransposon Ty1 integration targets specifically positioned asymmetric nucleosomal DNA segments in tRNA hotspots. *Genome Res*.
- Qi X, Daily K, Nguyen K, Wang H, Mayhew D, et al. (2012) Retrotransposon profiling of RNA polymerase III initiation sites. *Genome Research*.
- Baller JA, Gao J, Voytas DF (2011) Access to DNA establishes a secondary target site bias for the yeast retrotransposon Ty5. *Proc Natl Acad Sci U S A* 108: 20351–20356.

42. Baller JA, Gao J, Stamenova R, Curcio MJ, Voytas DF (2012) A nucleosomal surface defines an integration hotspot for the *Saccharomyces cerevisiae* Ty1 retrotransposon. *Genome Res*.
43. Janetzky B, Lehle L (1992) Ty4, a new retrotransposon from *Saccharomyces cerevisiae*, flanked by tau-elements. *J Biol Chem* 267: 19798–19805.
44. Pereira V (2008) Automated paleontology of repetitive DNA with REANNO-TATE. *BMC Genomics* 9: 614.
45. Edgar RC (2004) MUSCLE: multiple sequence alignment with high accuracy and high throughput. *Nucleic Acids Res* 32: 1792–1797.
46. Stamatakis A, Hoover P, Rougemont J (2008) A rapid bootstrap algorithm for the RAxML Web servers. *Syst Biol* 57: 758–771.
47. Ronquist F, Huelsenbeck JP (2003) MrBayes 3: Bayesian phylogenetic inference under mixed models. *Bioinformatics* 19: 1572–1574.
48. Librado P, Rozas J (2009) DnaSP v5: a software for comprehensive analysis of DNA polymorphism data. *Bioinformatics* 25: 1451–1452.
49. Nei M, Li WH (1979) Mathematical model for studying genetic variation in terms of restriction endonucleases. *Proc Natl Acad Sci U S A* 76: 5269–5273.
50. Watterson GA (1975) On the number of segregating sites in genetical models without recombination. *Theor Popul Biol* 7: 256–276.
51. Tajima F (1989) Statistical method for testing the neutral mutation hypothesis by DNA polymorphism. *Genetics* 123: 585–595.
52. Brookfield JF (1986) A model for DNA sequence evolution within transposable element families. *Genetics* 112: 393–407.
53. Maside X, Bartolome C, Charlesworth B (2003) Inferences on the evolutionary history of the S-element family of *Drosophila melanogaster*. *Mol Biol Evol* 20: 1183–1187.
54. Sanchez-Gracia A, Maside X, Charlesworth B (2005) High rate of horizontal transfer of transposable elements in *Drosophila*. *Trends Genet* 21: 200–203.
55. Hudson RR, Kaplan NL (1985) Statistical properties of the number of recombination events in the history of a sample of DNA sequences. *Genetics* 111: 147–164.
56. Galtier N, Gouy M, Gautier C (1996) SEAVIEW and PHYLO_WIN: two graphic tools for sequence alignment and molecular phylogeny. *Comput Appl Biosci* 12: 543–548.
57. Jordan IK, McDonald JF (1999) Comparative genomics and evolutionary dynamics of *Saccharomyces cerevisiae* Ty elements. *Genetica* 107: 3–13.
58. Cameron JR, Loh EY, Davis RW (1979) Evidence for transposition of dispersed repetitive DNA families in yeast. *Cell* 16: 739–751.
59. Curcio MJ, Sanders NJ, Garfinkel DJ (1988) Transpositional competence and transcription of endogenous Ty elements in *Saccharomyces cerevisiae*: implications for regulation of transposition. *Mol Cell Biol* 8: 3571–3581.
60. Kupiec M, Petes TD (1988) Meiotic recombination between repeated transposable elements in *Saccharomyces cerevisiae*. *Mol Cell Biol* 8: 2942–2954.
61. Zou S, Wright DA, Voytas DF (1995) The *Saccharomyces* Ty5 retrotransposon family is associated with origins of DNA replication at the telomeres and the silent mating locus HMR. *Proc Natl Acad Sci U S A* 92: 920–924.
62. Naumov GI, Naumova ES, Lantto RA, Louis EJ, Korhola M (1992) Genetic homology between *Saccharomyces cerevisiae* and its sibling species *S. paradoxus* and *S. bayanus*: electrophoretic karyotypes. *Yeast* 8: 599–612.
63. Fink GR, Boeke JD, Garfinkel DJ (1986) The mechanism and consequences of retrotransposition. *Trends in Genetics* 2: 118–123.
64. Jordan IK, McDonald JF (1998) Interelement selection in the regulatory region of the copia retrotransposon. *J Mol Evol* 47: 670–676.
65. Bergman CM, Quesneville H (2007) Discovering and detecting transposable elements in genome sequences. *Brief Bioinform* 8: 382–392.
66. Kellis M, Patterson N, Endrizzi M, Birren B, Lander ES (2003) Sequencing and comparison of yeast species to identify genes and regulatory elements. *Nature* 423: 241–254.
67. Cliften P, Sudarsanam P, Desikan A, Fulton L, Fulton B, et al. (2003) Finding functional features in *Saccharomyces* genomes by phylogenetic footprinting. *Science* 301: 71–76.
68. Dymond JS, Richardson SM, Coombes CE, Babatz T, Muller H, et al. (2011) Synthetic chromosome arms function in yeast and generate phenotypic diversity by design. *Nature* 477: 471–476.
69. Sipiczki M (2008) Interspecies hybridization and recombination in *Saccharomyces* wine yeasts. *FEMS Yeast Res* 8: 996–1007.
70. Marinoni G, Manuel M, Petersen RF, Hvidtfeldt J, Sulo P, et al. (1999) Horizontal transfer of genetic material among *Saccharomyces* yeasts. *J Bacteriol* 181: 6488–6496.
71. Sebastiani F, Barberio C, Casalone E, Cavaliere D, Polsinelli M (2002) Crosses between *Saccharomyces cerevisiae* and *Saccharomyces bayanus* generate fertile hybrids. *Res Microbiol* 153: 53–58.
72. Greig D, Louis EJ, Borts RH, Travisano M (2002) Hybrid speciation in experimental populations of yeast. *Science* 298: 1773–1775.
73. Liti G, Barton DB, Louis EJ (2006) Sequence diversity, reproductive isolation and species concepts in *Saccharomyces*. *Genetics* 174: 839–850.
74. Wei W, McCusker JH, Hyman RW, Jones T, Ning Y, et al. (2007) Genome sequencing and comparative analysis of *Saccharomyces cerevisiae* strain YJM789. *Proc Natl Acad Sci U S A* 104: 12825–12830.
75. Doniger SW, Kim HS, Swain D, Corcuera D, Williams M, et al. (2008) A catalog of neutral and deleterious polymorphism in yeast. *PLoS Genet* 4: e1000183.
76. Esberg A, Muller LA, McCusker JH (2011) Genomic structure of and genome-wide recombination in the *Saccharomyces cerevisiae* S288C progenitor isolate EM93. *PLoS One* 6: e25211.
77. Bensasson D, Zarowiecki M, Burt A, Koufopanou V (2008) Rapid evolution of yeast centromeres in the absence of drive. *Genetics* 178: 2161–2167.
78. Bensasson D (2011) Evidence for a high mutation rate at rapidly evolving yeast centromeres. *BMC Evol Biol* 11: 211.
79. Boeke JD, Sandmeyer SB (1991) Yeast transposable elements. In: Broach JR, Jones EW, Pringle J, editors. *The Molecular and Cellular Biology of the Yeast Saccharomyces cerevisiae*. Cold Spring Harbor, N.Y.: Cold Spring Harbor Press. 193–261.
80. Servant G, Penetier C, Lesage P (2008) Remodeling yeast gene transcription by activating the Ty1 long terminal repeat retrotransposon under severe adenine deficiency. *Mol Cell Biol* 28: 5543–5554.
81. Knight SA, Labbe S, Kwon LF, Kosman DJ, Thiele DJ (1996) A widespread transposable element masks expression of a yeast copper transport gene. *Genes Dev* 10: 1917–1929.
82. Gaisne M, Becam AM, Verdier J, Herbert CJ (1999) A ‘natural’ mutation in *Saccharomyces cerevisiae* strains derived from S288c affects the complex regulatory gene HAP1 (CYP1). *Curr Genet* 36: 195–200.
83. Jordan IK, McDonald JF (1999) The role of interelement selection in *Saccharomyces cerevisiae* Ty element evolution. *J Mol Evol* 49: 352–357.
84. Bergman CM, Bensasson D (2007) Recent LTR retrotransposon insertion contrasts with waves of non-LTR insertion since speciation in *Drosophila melanogaster*. *Proc Natl Acad Sci U S A* 104: 11340–11345.