



University of HUDDERSFIELD

University of Huddersfield Repository

McDowell, James

An investigation into the social and educational affordances of computer mediated communications experienced by students with Asperger's Syndrome participating in group work

Original Citation

McDowell, James (2010) An investigation into the social and educational affordances of computer mediated communications experienced by students with Asperger's Syndrome participating in group work. In: SOLSTICE Technology Enhanced Learning Conference, 3rd June 2010, Edge Hill University, London. (Unpublished)

This version is available at <http://eprints.hud.ac.uk/id/eprint/10804/>

The University Repository is a digital collection of the research output of the University, available on Open Access. Copyright and Moral Rights for the items on this site are retained by the individual author and/or other copyright owners. Users may access full items free of charge; copies of full text items generally can be reproduced, displayed or performed and given to third parties in any format or medium for personal research or study, educational or not-for-profit purposes without prior permission or charge, provided:

- The authors, title and full bibliographic details is credited in any copy;
- A hyperlink and/or URL is included for the original metadata page; and
- The content is not changed in any way.

For more information, including our policy and submission procedure, please contact the Repository Team at: E.mailbox@hud.ac.uk.

<http://eprints.hud.ac.uk/>

SOLSTICE

Conference 2010



Edge Hill University

An investigation into the social and educational affordances of computer mediated communications experienced by students with Asperger's Syndrome participating in group work

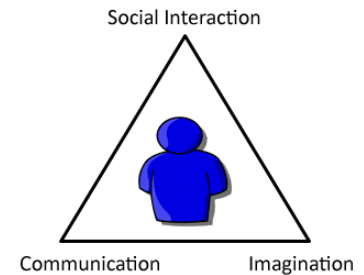
James McDowell, University of Huddersfield



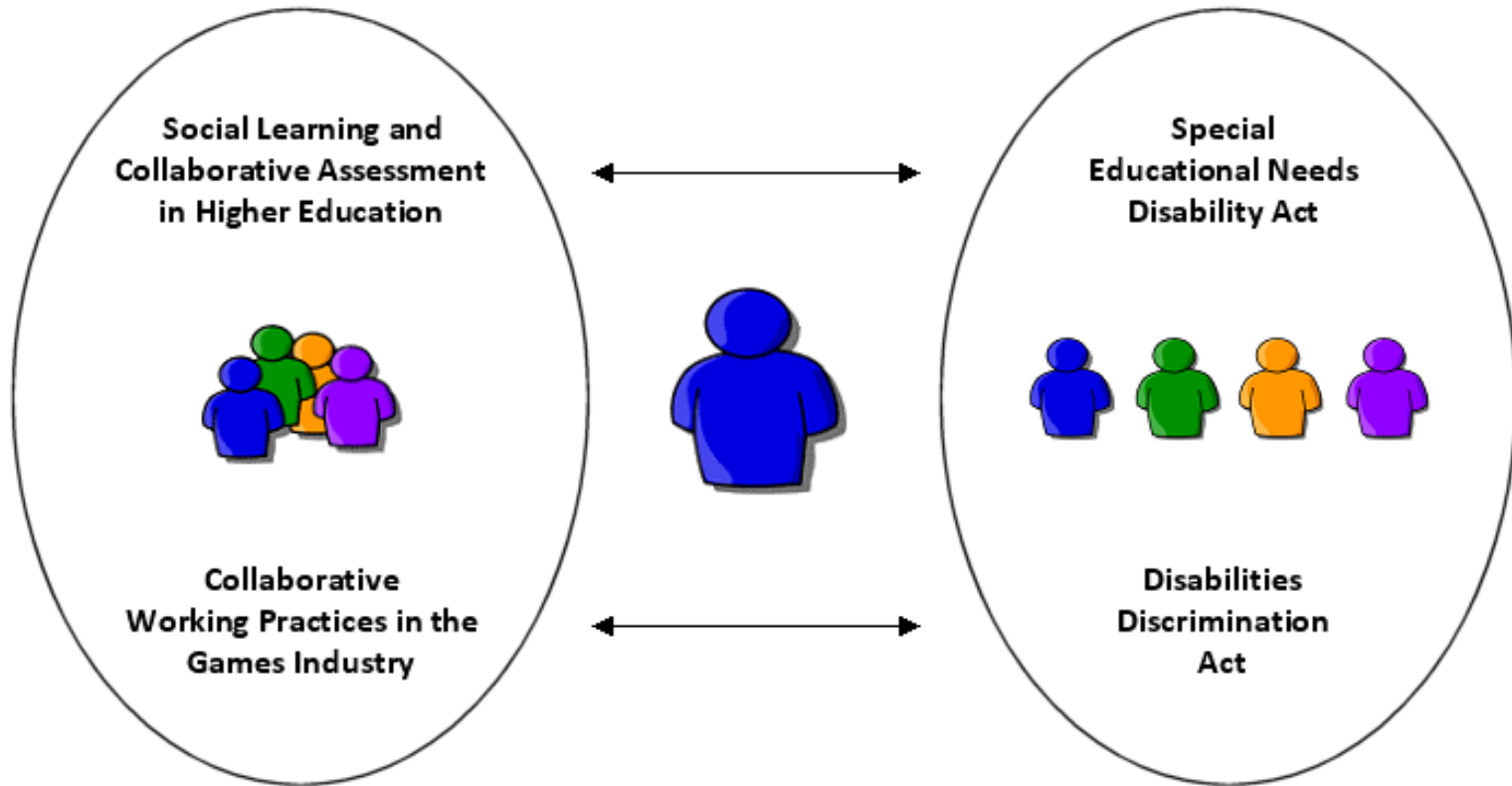
Asperger's Syndrome ...



- Located in the spectrum of autistic disorders
- Characterised by a “triad of impairments”:
 - social interaction, communication, imagination
 - (Wing & Gould, 1979; Attwood, 2003)
- IQ usually within the normal or above normal range
 - (Klin & Volkmar, 2000)
- A pervasive developmental disorder covered by:
 - Disabilities Discrimination Act (1995), and
 - Special Educational Needs and Disability Act (2001)



An inherent tension ...



Note: c.5-10% of our computer games students are diagnosed with Asperger's Syndrome

Introducing 'Alex' ...



- A male undergraduate, c. 20 years old, diagnosed with Asperger's Syndrome
- Observable anxiety in studio situations
- Always sat in the rear corner seat in the studio
- Difficulties in 1st year, nearly dropped out
- Supported by a Disability Support worker
- In 2nd year of the course developing a game in a self-selecting team with 3 neurotypical students

A problem and a solution ...



The Course: FdSc Computer Games Technology

- Traditional documentation a weak area
- Needed a solution for the whole class
 - Blogging tool and online collaborative working facility



➔ e-portfolio system


- Popularity of social networking in U25s



➔ Mahara – a free e-portfolio system with SN

The e-portfolio system ...



 **mahara** Open Source ePortfolios
[mah-hah-rah,verb]: to think, thinking, thought

Search Users


[Home](#) [Profile](#) [My Portfolio](#) [Groups](#) [Settings](#) [Site Administration](#) [Logout](#)

[Edit profile page](#) [View profile page](#) [Edit Profile](#) [Profile Icons](#) [My Resumé](#) [My Goals](#) [My Skills](#)

JMAX

About Me

I work at the University on a half-time basis while I'm studying for my PhD at Lancaster University, so will be in on the days when I'm teaching the course, i.e. Tuesdays and Fridays. To contact me outside these two days just email me, 'cos I'll be collecting and responding to email seven days a week ... 😊



If you use Skype you could also look for my Skype ID: james.mcdowell-huddersfield, but don't expect to find me on FaceBook, 'cos I don't go there! 😊

- **Email Address:** James.McDowell@hud.ac.uk
- **First Name:** James
- **Last Name:** McDowell
- **Skype Username:** james.mcdowell-huddersfield
- **Occupation:** Senior Lecturer in Digital Media
- **Official Website Address:** <http://www2.hud.ac.uk/st...staffcv.php?staffid=634>
- **Business Phone:** +44 (0) 1484 473700

My Groups

Media Production Studio 1 - Admin
This is the whole module group for the Queensgate

My Views

JMAX Blog Area ...
So this where you'll get to see my most recent blog posts ... I'll have to work on this area a bi...
Artefacts: [JMAX Journal](#)

Gameplay Vids: Counter-Strike

Week 2 Development Work
This is the development work completed in Week 2 ...
Artefacts: [Week2_Editor.jpg](#)

Week 3 Development Work
This is the Week 3 Development Work ...
Artefacts: [Week3_Editor1.jpg](#), [Week3_Editor2.jpg](#), [Week3_Editor3.jpg](#), [Week3_Editor4.jpg](#), [Week3_GamePlay.jpg](#), [Week3_InGame.jpg](#)

Week 4 Development Work
This is the Week 4 Development Work ...
Artefacts: [Week4_Editor1.jpg](#), [Week4_Editor2.jpg](#), [Week4_Editor3.jpg](#), [Week4_Editor4.jpg](#), [Week4_InGameDoorClosing.jpg](#), [Week4_InGameTeleporter.jpg](#)

Week 4 Supplemental

Winners Wear Red?!

In the eighteenth and nineteenth centuries soldiers apparently wore red to scare their enemies, but then as warfare and weaponry developed people realised that this kinda made them easy targets, and the style and colour of military uniforms changed as it was believed that wearing camouflage increased your chances of survival - sounds fair enough, right?!

Well apparently wearing red in UT2004 makes you more likely to be on the winning team, at least according to some research done at a Uni in Denmark:
<http://uk.gamespot.com/news/6234741.html>

I wondered whether we could do some research of our own to test out their theory, but I dunno about playing over 1300 games on CTF-Face - at even just the standard 15 minutes a game before extra time kicks in if it's a draw, that's almost 350 hours of gameplay per person ... which is about as much time as you're supposed to spend on this module in the entire year!

Posted by JMAX on 25 October 2009, 11:44 PM

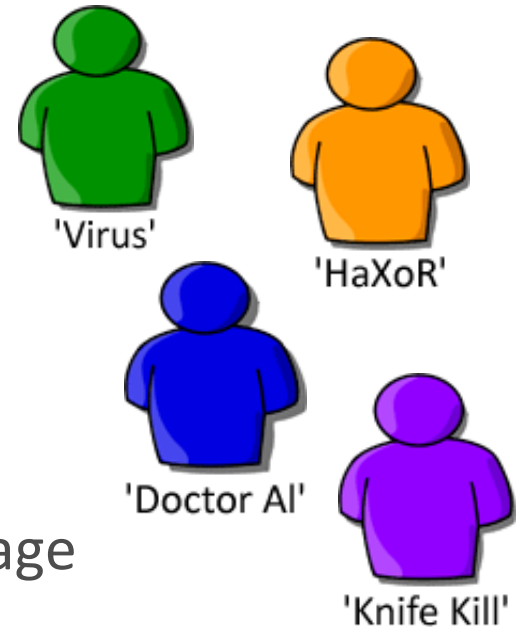
My Friends (16 of 55)

What happened first ...



- All students asked to create their profile within the first two weeks of term ...

- Within two hours, all students had:
 - created a profile
 - selected a nickname
 - uploaded a photo or other identifier image



- ... and some had created special interest groups

What happened next ...



- Alex created his group's discussion forum in Mahara, initiating the opening thread ...



'Doctor AI'

“I guess we should probably pitch ideas and things here?”

- ... and then uploaded concept artwork, both asking his peers for feedback and offering it ...
- Disabilities support staff suggested this was unusual and worthy of further research ...

Conducting a case study ...



- This led me to conduct a qualitative case study as part of my PhD work, incorporating ...
 - Literature review
 - Regular referrals to ‘expert witnesses’
 - Observation of in-studio behaviour
 - Observation of online activity in Mahara
 - Email interviews

Initial analysis of the data ...



- A comparative analysis of the email interview data identified a pattern of high frequency usage of collective-inclusive phraseology by Alex:

*“It's helped **us** to share files more frequently and easily than **we** could have otherwise done; without it, **we'd** probably have to send large emails or pass around pen drives all the time to keep **everyone** up to date, whereas with Mahara **we** can get the files to **each other** and update them a lot easier.” (my emphasis)*

- ... a pattern not evident in the neurotypical group:

“It has had a fairly significant effect. Having to blog every week both refreshes the memory of what has been previously written and makes me think ‘What have I done this week and what will I do next week?’” (Neurotypical Participant 1)

The findings of the case study ...



Six key predictions were identified and tested:

<i>Predictions</i>	<i>Source of Evidence</i>	<i>Pattern-Match or Correlation of Sources</i>
P1. Alex will be unable to participate meaningfully in group work	Literature Review, Expert Witnesses, F2F Observation, Observation of Online Activity, Email Interviews	Negative – according to literature and expert witnesses, Alex should have been unable to cope with group work, however observations and email interviews contradict this.
P2. Alex will experience difficulties dealing with social cues in F2F group situations	Literature Review, Expert Witnesses, F2F Observation	Positive – according to literature and expert witnesses, Alex should experience difficulty in dealing with social cues, and observations of Alex in F2F situations confirmed this.
P3. Alex's written word will be more eloquently expressed than spoken word	Literature Review, Expert Witnesses, F2F Observation, Observation of Online Activity, Email Interviews	Positive – all sources confirm that Alex demonstrates greater eloquence in written communications than in spoken and F2F situations.

... continues overleaf ...

The findings of the case study ...



Predictions	Source of Evidence	Pattern-Match or Correlation of Sources
P4. Alex will display anxiety and nervousness in F2F group situations	Literature Review, Expert Witnesses, F2F Observation	Neutral – Alex initially displayed high levels of nervous behaviour in F2F situations, as predicted by the literature and the expert witnesses, however later F2F observations suggested improvement in this area, with signs of diminishing anxiety and increasing confidence in participation.
P5. Alex will not take the initiative in group work	Literature Review, Expert Witnesses, F2F Observation, Observation of Online Activity, Email Interviews	Negative – according to the literature and expert witnesses, Alex should not take a lead in F2F group work, however online and email sources indicate that the student has done so in non-F2F contexts, initiating new discussion threads and posting ideas for consideration by other group members.
P6. Alex will not engage in the process of offering and requesting feedback from other group members	Expert Witnesses, F2F Observation, Observation of Online Activity	Negative – expert witness evidence suggests feedback is particularly difficult for learners with AS, however F2F observations indicate some success in overcoming this, and online observations highlight pro-activity in both offering feedback and requesting it.

Limitations of the case study ...



- A single-case case study ...
 - Unique factors, e.g. Alex, the group dynamic ...
- Purely qualitative, self-reporting ...
- Issues of generalisability ...
- But, could the case constitute a 'Black Swan'?



Final observations ...



- Social affordances and outcomes
 - By the end of Semester 2, Alex was observed engaging in conversation with peers three rows of PCs away ...
 - His confidence and self-esteem are clearly boosted ...
 - He is much more closely integrated with peers ...
 - There is a real possibility for Alex to make a successful transition from study to work in the games industry

Final observations ...



- Educational affordances and outcomes
 - Alex was afforded the opportunity to successfully participate in a collaborative group work activity ...
 - He received an A grade for the module ...
 - He has now completed his course of study and will be progressing to the award of the qualification ...
 - He has the opportunity to proceed to the top-up course which leads to the award of the full BA(Hons)

Further research ...

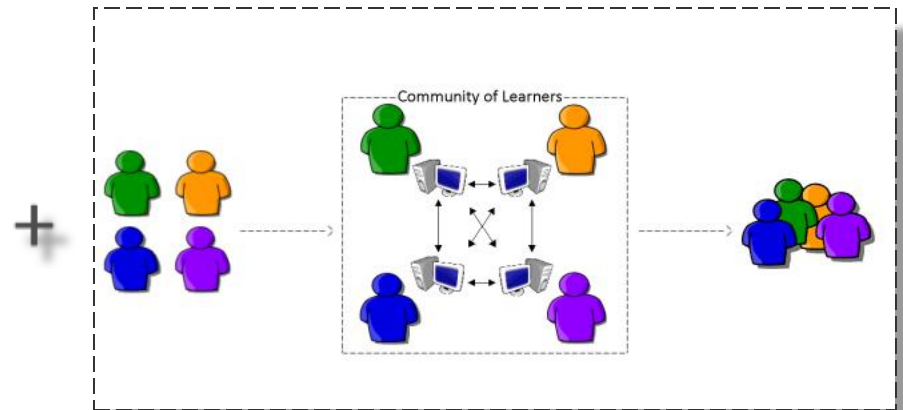
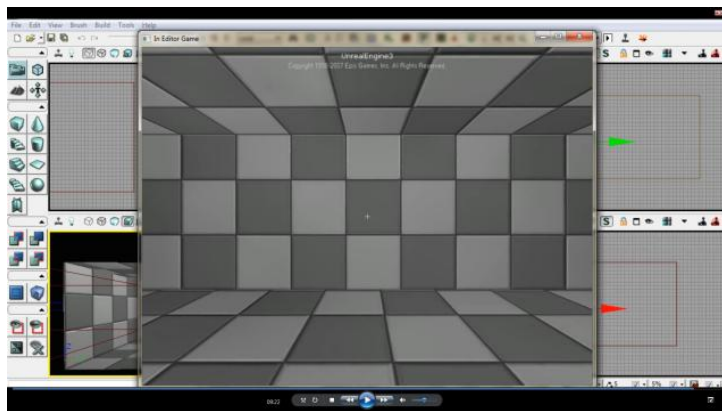


- PhD at Lancaster University
 - Expanding the case-study to investigate the potential of collaborative games and simulations ...
 - Using mixed methods, combining:
 - Qualitative, self-reporting via email interviews and observations of online and offline activity while working in collaborative situations ...
 - Quantitative study investigating measurable improvements of academic achievement, and career development within the workplace ...

An application in progress ...



- UoHTube Project
 - Step-by-step game development video tutorials ...
 - Development of an inclusive online ‘learning community’, where students work together, sharing best practice and creating learning materials ...





James McDowell

School of Computing and Engineering
University of Huddersfield

Email: j.b.mcdowell@hud.ac.uk