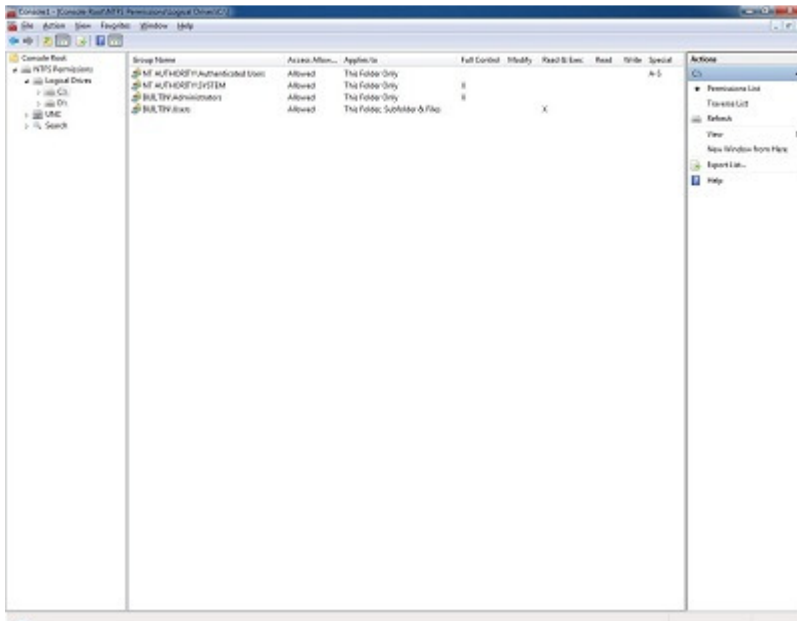


Documentation

Jump to : [Permissions View](#) - [Traversal View](#) - [Search View](#) - [Special Permissions Key](#) - [Known problems](#)

Permissions View



Description

The Permissions View simply shows every Access Control Entry present within the Access Control List for the specified local or remote directory.

This view shows the group domain\name, if access is allowed, the propagation and the access level for each permission entry.

Note: The special permission granularity is represented in a single or double character format.

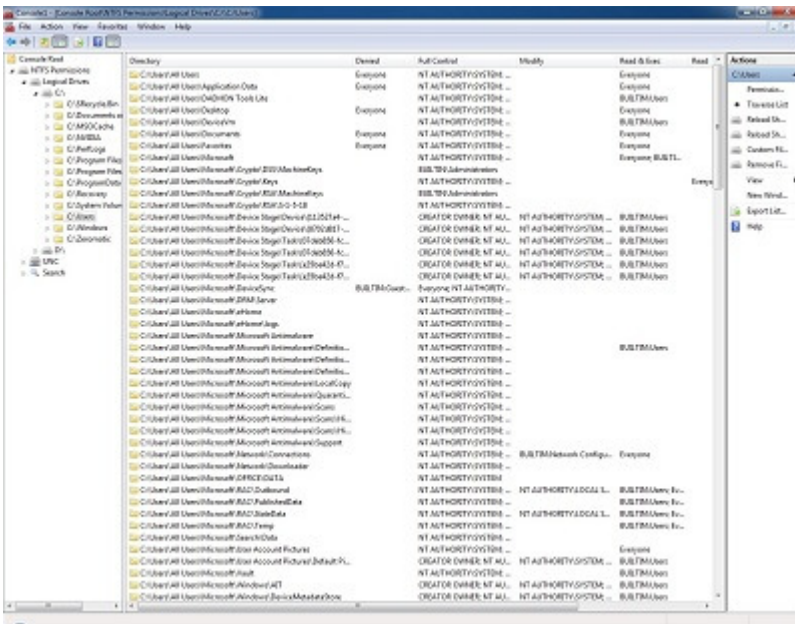
Functionality

Right Clicking on any of the permission entries will display the following options

- Show Selected - Displays the full granularity of the permission
- Search Tree - Adds a search node to recursively searches from the current **directory** showing the permission that the selected group holds on each directory
- Search Drive - Adds a search node to recursively searches from the current **base directory** showing the permission that the selected group holds on each directory
- Custom Search - Adds a search node to recursively searches from **any specified local or remote directory** showing the permission that the selected group holds on each directory
- Members - Shows the Members of the selected group
- Members Of - Shows the groups that the selected group is a member of

Note: After a Search has been selected a new node will appear under the 'Search' Node within the left pane. To start the search process you must go and select the node.

Traversal View



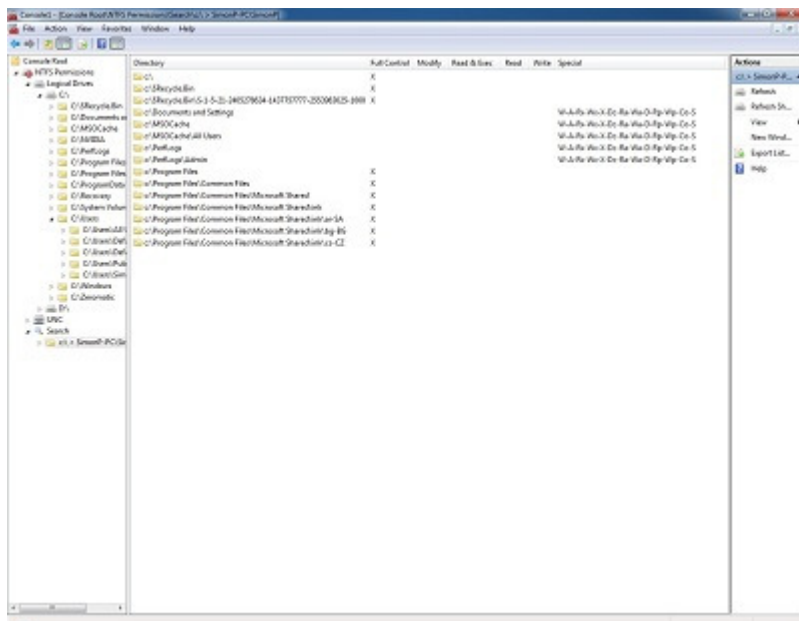
Description

The Traversal View allows for a recursive search from any specified local or remote directory which will display all the permissions present on any directory that differs from its parent. This view provides for the same permission classification as the Permission View.

Functionality

- Reload Showing Only Different - Restarts the traversal process showing only directories with permissions that differ from their parent
- Reload Showing All Directories - Restarts the traversal process showing all directories regardless of whether their permissions are the same as the directory that they reside within
- Custom Filter - Will allow the user to select all the groups that they wish to filter out
- Remove Filter - This will remove any custom filter that is in place

Search View



Description

This view shows all the directories that the specified group has permission on as well as showing the level of access.

By default this view will only show directories that have permissions set differently to their parent. This process also takes into consideration both the local and domain based groups that the user is a member of. This means that the level of the permission that is displayed within this view is the effective permission that the specified group/user holds on the location.

Functionality

- Refresh showing all directories - Restarts the search process showing all directories regardless of whether their permissions are the same as the directory that they reside within

Special Permissions Key

| Attribute | Character Representation |
|--------------------------------|--------------------------|
| Traverse folder / execute file | X |
| List folder / read data | R |
| Read attributes | Ra |
| Read extended attributes | Rx |
| Create file / write file | W |
| Create folders / append data | A |
| Write attributes | Wa |
| Write extended attributes | Wx |
| Delete subfolders and files | Dc |
| Delete | D |
| Read permissions | Rp |
| Change permissions | Cp |
| Take ownership | Co |

Synchronize

S

Known Problems

- Performing the 'Members Of' function can sometime suffer from a slowness condition on machines that are not attaches to a domain. This slowness condition can also occur within the search features.
- Exporting to a CSV is not advised because users can use commas within directory paths - This will break the formatting.
- The use of environment variables within directory paths will not work