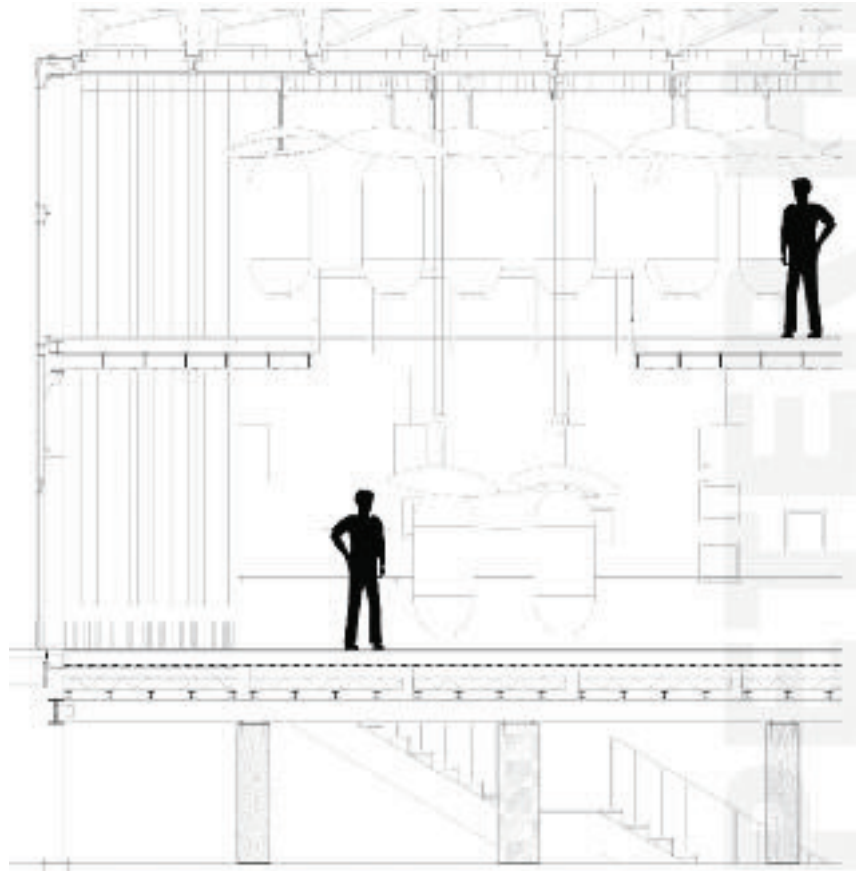


---

PETER HINCHCLIFFE

---





The site for this building sits on an axis of the more than two thousand year old city of Kunming in China, between an overcrowded pedestrian area and an underused large scale sunken square that was surrounded by some derelict 2-3 story buildings. The design solution not only investigates the ways that newly created spaces intervene with the existing space at various levels, but also creates new open public areas that support the access to existing small businesses at different levels, as an alternative to the adjacent large shopping malls. The design process explores the programme of information dissemination through a series of dynamic and sculptural components which are integral in defining the spatial choreography of the cultural centre.

