



University of **HUDDERSFIELD**

University of Huddersfield Repository

Lee, Jenn

Co-Creation: Consumer as producer

Original Citation

Lee, Jenn (2012) Co-Creation: Consumer as producer. In: Creative Works: Ideas Pool Information Event – Co-Creation: Consumer as Producer, 20th November 2012, London, UK. (Unpublished)

This version is available at <http://eprints.hud.ac.uk/id/eprint/25540/>

The University Repository is a digital collection of the research output of the University, available on Open Access. Copyright and Moral Rights for the items on this site are retained by the individual author and/or other copyright owners. Users may access full items free of charge; copies of full text items generally can be reproduced, displayed or performed and given to third parties in any format or medium for personal research or study, educational or not-for-profit purposes without prior permission or charge, provided:

- The authors, title and full bibliographic details is credited in any copy;
- A hyperlink and/or URL is included for the original metadata page; and
- The content is not changed in any way.

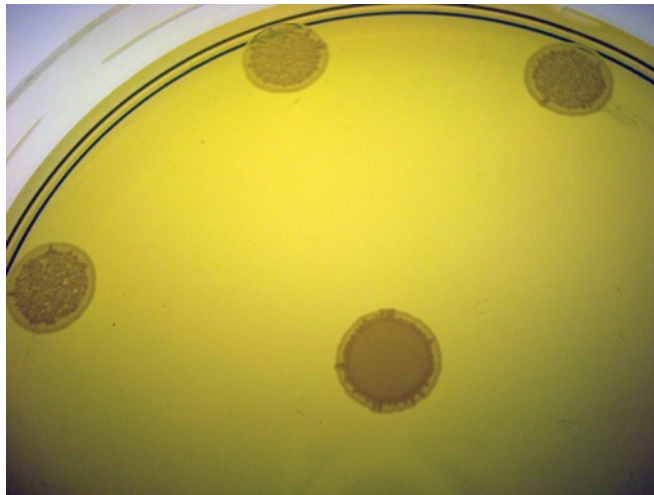
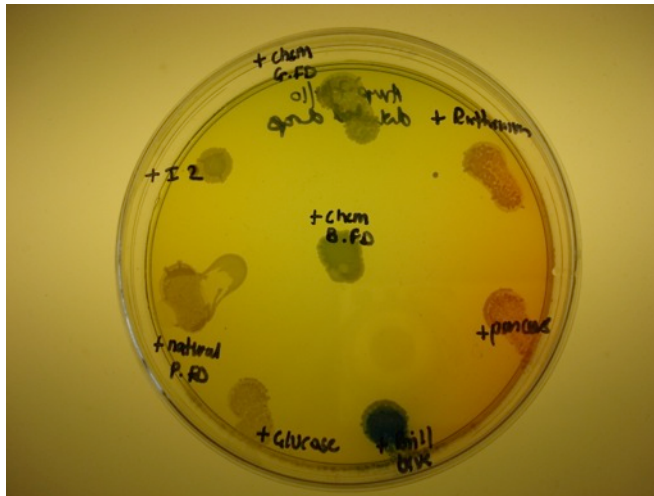
For more information, including our policy and submission procedure, please contact the Repository Team at: E.mailbox@hud.ac.uk.

<http://eprints.hud.ac.uk/>

Co-Creation: Consumer as Producer

Jenny Lee
www.jennylee.org.uk
www.posttextiles.com
jenny@posttextiles.com

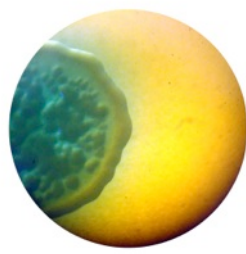
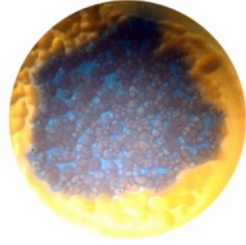
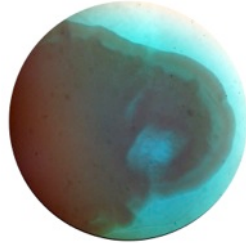
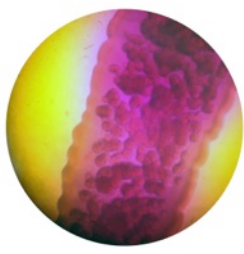
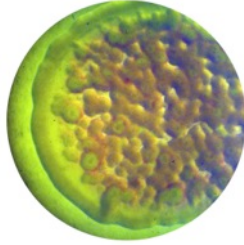
Co-Design as a Methodology for Creativity & Innovation



Microsoft Service Meets Social Human Connectivity

New technologies inevitably influence how we connect and interact. Current trends suggest we are moving towards a more human-centred, collaborative age in which technology acts as a tool for delivering social collaboration and networking capabilities.

This project aims to form an exploration of human interactions and how we can utilise, science and the inherent codes within textiles as a interface to enhance human connectivity.



Patterns of Connections | Bacteria Experiments



Patterns of Connections | Bio-lumi

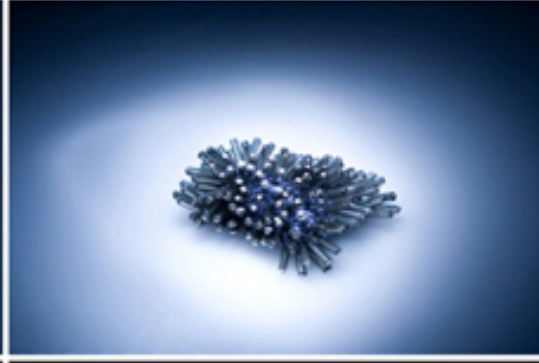
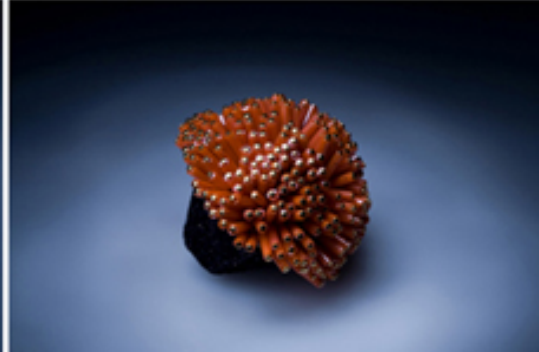
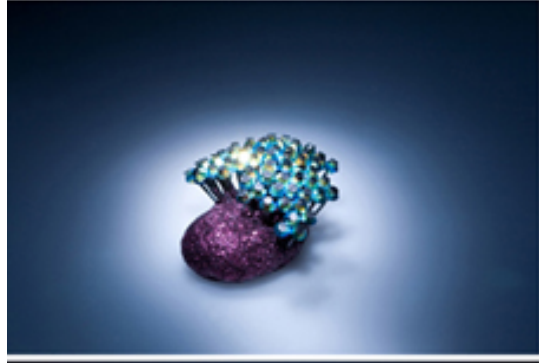


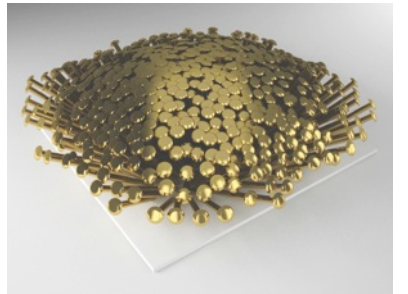
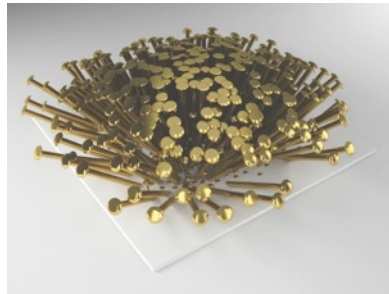
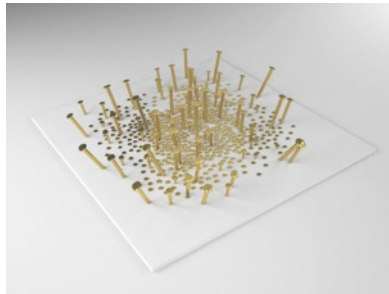
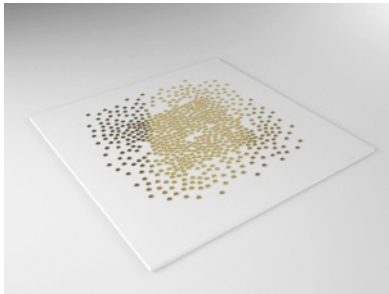
Immateriality | The Future Human

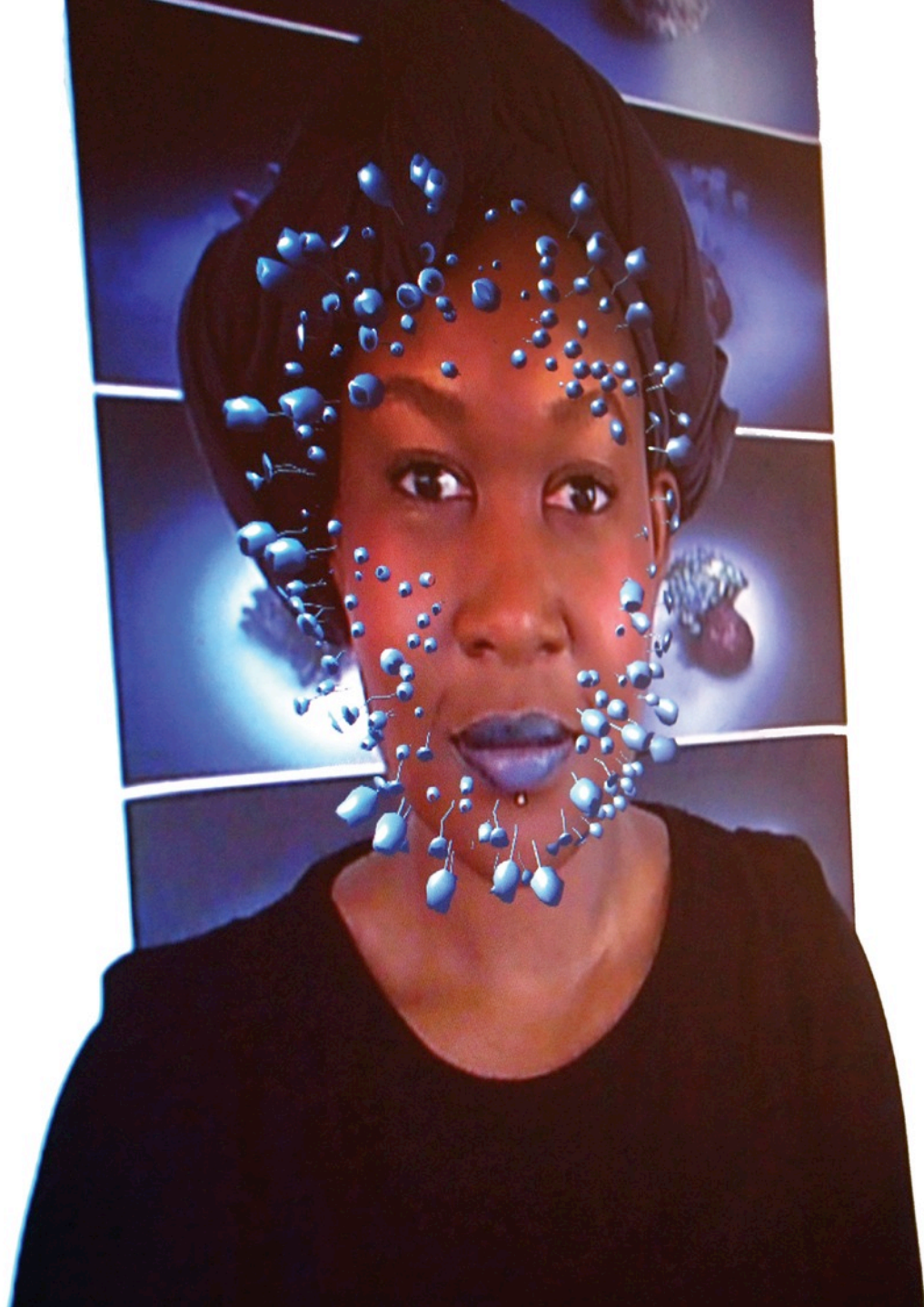
The aim of this project is to engage the public to question the social and ethical implications that science and technology will have on society and the self. To seriously consider how we choose to utilise this in the future.

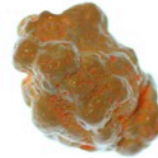
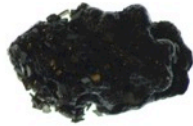
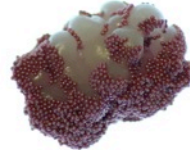
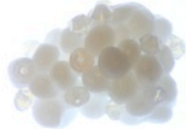
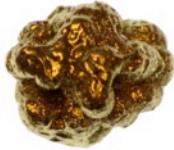


The Digital Couture Collection | Digital Skins





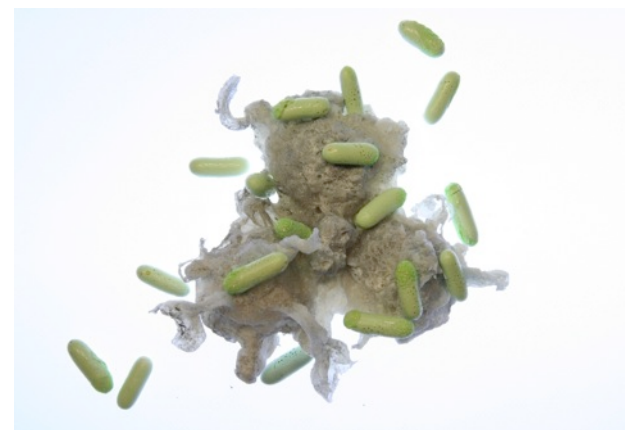
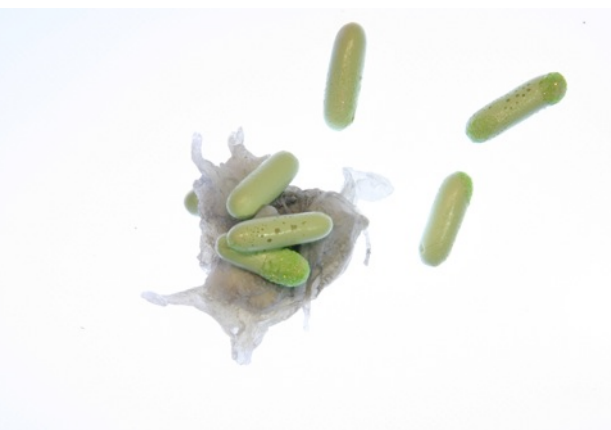




Quanticare | IGem

International Genetically Engineered Machine (IGEM) Foundation fosters scientific research and education through collaborative partnerships between scientists, designers and students.

Quanticare is a project developed in partnership with designers Jenny Lee, Amy Congdon & Ann-Kristin Abel and the 2012 NRP-UEA Igem team, with the aim of exploring the ethical implications of synthetic biology.





What if we designed with plants in mind?

Botanical Fabrications

Inspired by the Swiss Declaration of Plant Rights, Botanica has taken serious considerations of sustainable production methods that are not only less harmful to the environment but also places value and importance to how we are and support plant lifestyle.



Matter | Future Luxury

A research driven project that will broadly investigate into the historical, social and future context of luxury, building an understanding of consumer behaviours past and present and predicting how certain drivers is and will be shaping our future retail environments.

What is the future of Craftsmanship?

POSTextiles



www.postextiles.com
info@postextiles.com
press@postextiles.com

Cloth

Fabric

A Material Exploration

Interiors UK | Birmingham
22.01.2012 - 25.01.2012
with Designersblock

*Ann-Kristin Abel
Natsai Chieza
Amy Congdon
Jenny Lee
Laura Martinez
Marie Rouillon
Miriam Ribul*