



# University of HUDDERSFIELD

## University of Huddersfield Repository

Di Laura, Anna, Whittaker, Robert, Hothi, Harry, Meswania, Jay, Henckel, Johann, de Villiers, Danielle, Kwon, Young-Min, Racasan, Radu, Bills, Paul J., Blunn, Gordon, Skinner, John and Hart, A. J.

Understanding Why Dual-Taper Hips Fail

### Original Citation

Di Laura, Anna, Whittaker, Robert, Hothi, Harry, Meswania, Jay, Henckel, Johann, de Villiers, Danielle, Kwon, Young-Min, Racasan, Radu, Bills, Paul J., Blunn, Gordon, Skinner, John and Hart, A. J. (2016) Understanding Why Dual-Taper Hips Fail. In: American Academy of Orthopaedic Surgeons Annual Meeting, 1-5 March 2016, Orlando, USA.

This version is available at <http://eprints.hud.ac.uk/id/eprint/27280/>

The University Repository is a digital collection of the research output of the University, available on Open Access. Copyright and Moral Rights for the items on this site are retained by the individual author and/or other copyright owners. Users may access full items free of charge; copies of full text items generally can be reproduced, displayed or performed and given to third parties in any format or medium for personal research or study, educational or not-for-profit purposes without prior permission or charge, provided:

- The authors, title and full bibliographic details is credited in any copy;
- A hyperlink and/or URL is included for the original metadata page; and
- The content is not changed in any way.

For more information, including our policy and submission procedure, please contact the Repository Team at: [E.mailbox@hud.ac.uk](mailto:E.mailbox@hud.ac.uk).

<http://eprints.hud.ac.uk/>



SE 07

# Understanding Why Dual-Taper Hips Fail

Anna Di Laura<sup>1</sup>, Robert Whittaker<sup>1</sup>, Harry Hothi<sup>1</sup>, Jay Meswania<sup>1</sup>, Johann Henckel<sup>1</sup>, Danielle de Villiers<sup>1</sup>, Young-Min Kwon<sup>2</sup>, Radu Racasan<sup>3</sup>, Paul Bills<sup>3</sup>, Gordon Blunn<sup>1</sup>, John Skinner<sup>1</sup>, Alister Hart<sup>1</sup>

Consulting/Royalty payment has been received directly related to products discussed

<sup>1</sup>Institute of Orthopaedics and Musculoskeletal Science, University College London, UK

<sup>2</sup>Massachusetts General Hospital/Harvard Medical School, Boston, USA

<sup>3</sup>Centre for Precision Technologies, University of Huddersfield, Huddersfield, UK

## Dual-taper systems



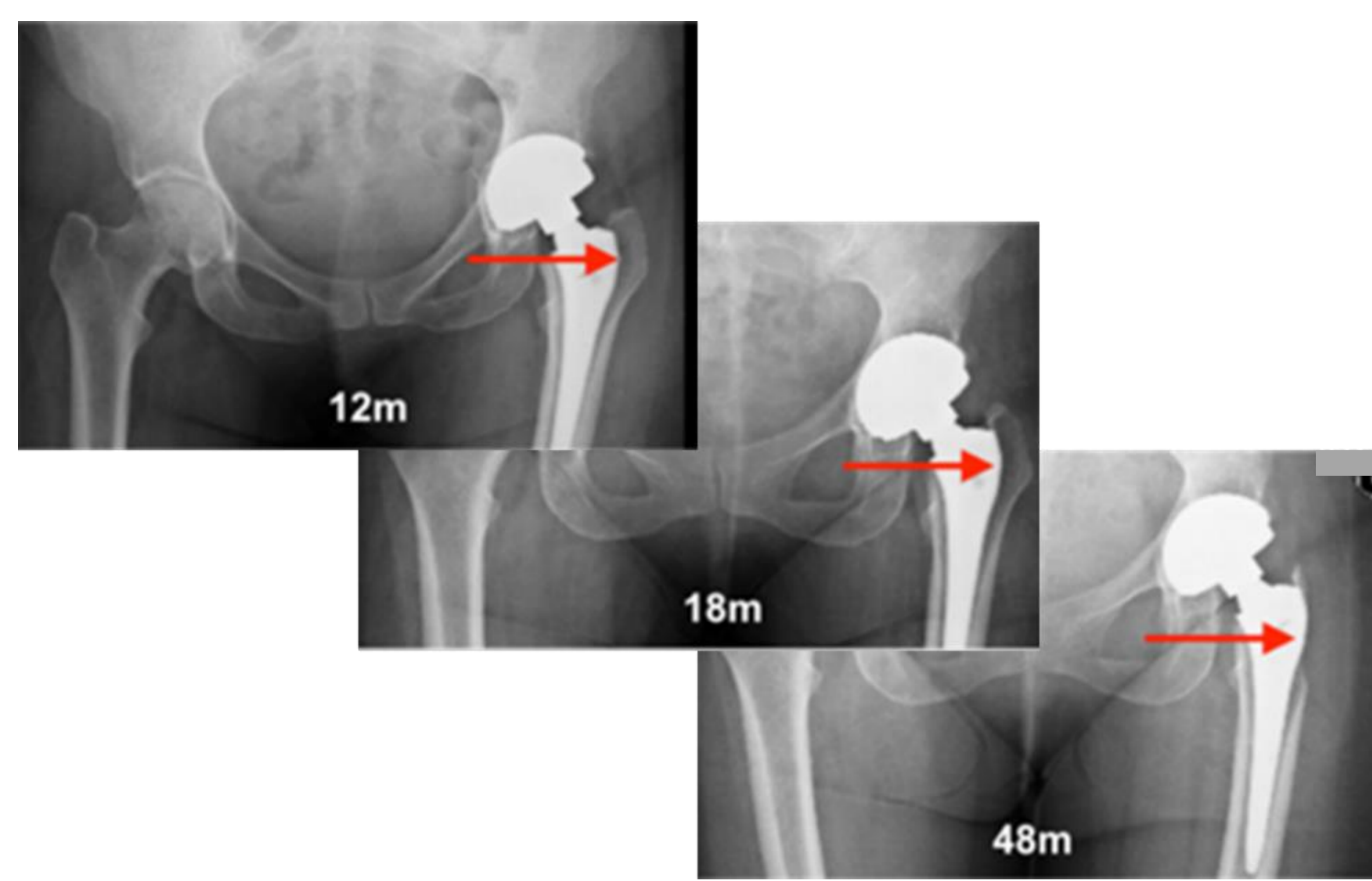
**Advantages:** biomechanical, mixing of materials, facilitation of revision arthroplasty [1];

**Disadvantages:** mechanical failure [2], metal ion release [3], corrosion at the modular interface [4], bony erosion [5].



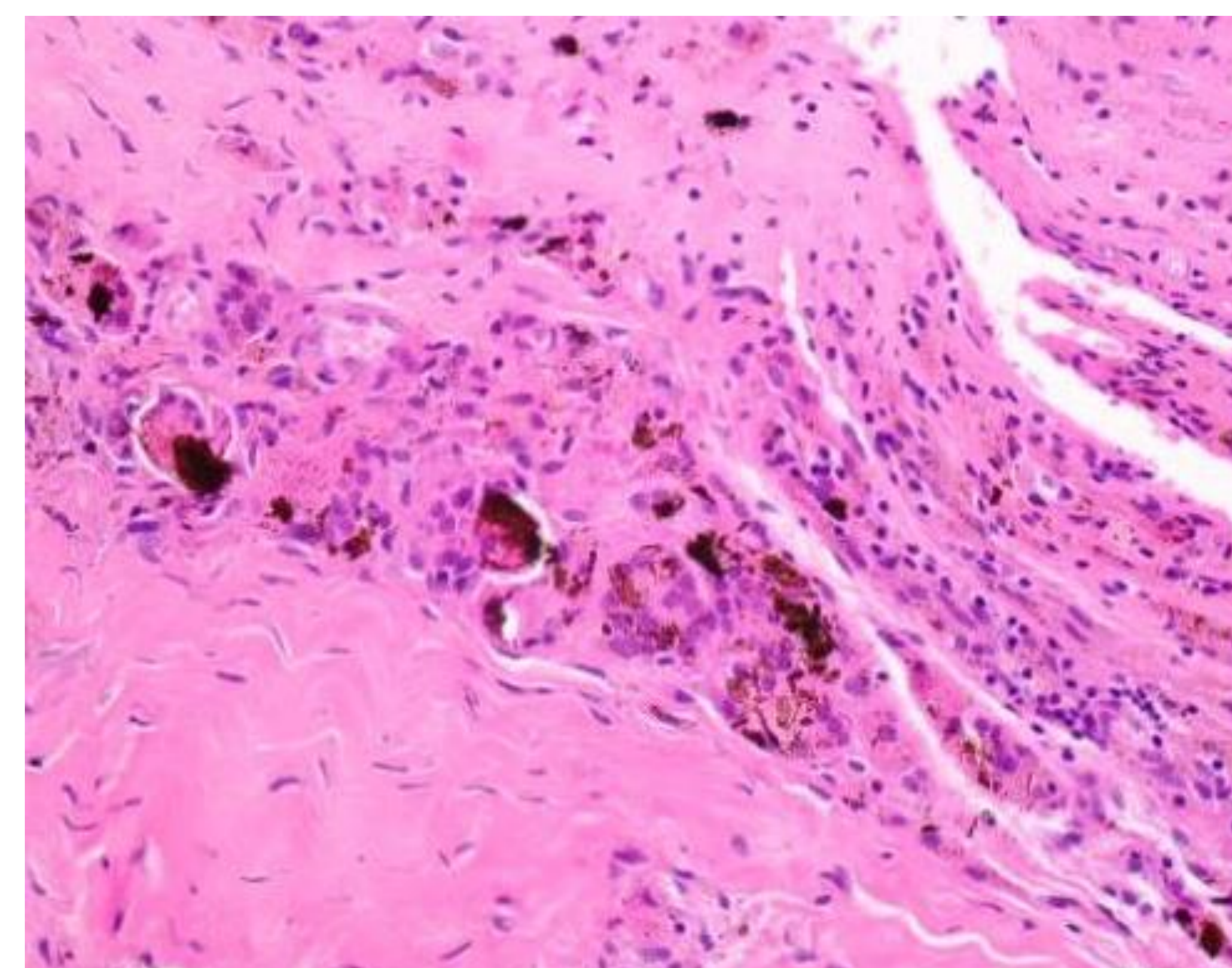
# Our Study

We prospectively recruited 100 patients with failed dual taper hips, collecting pre, intra and post op data to determine the clinical category of failure. Pre-revision blood metal ion levels were measured using ICPMS and, in a proportion of patients, CT was used for component position analysis and MRI was used for soft tissue analysis.



Progressive erosion of the greater trochanter (red arrows) on plain radiographs at 12, 18 and 48 months after implantation.

Histology of a specimen from the synovial bursa, greater trochanter reveals the presence of metal particles in giant cells and macrophages.

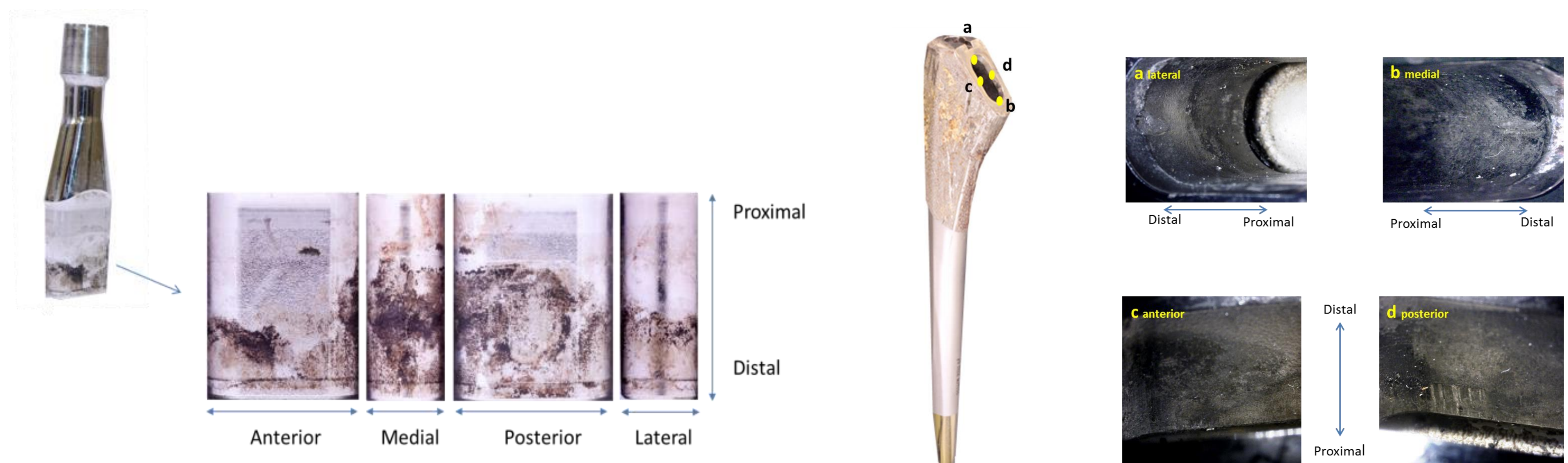


MARS MRI showing pseudotumor formation.

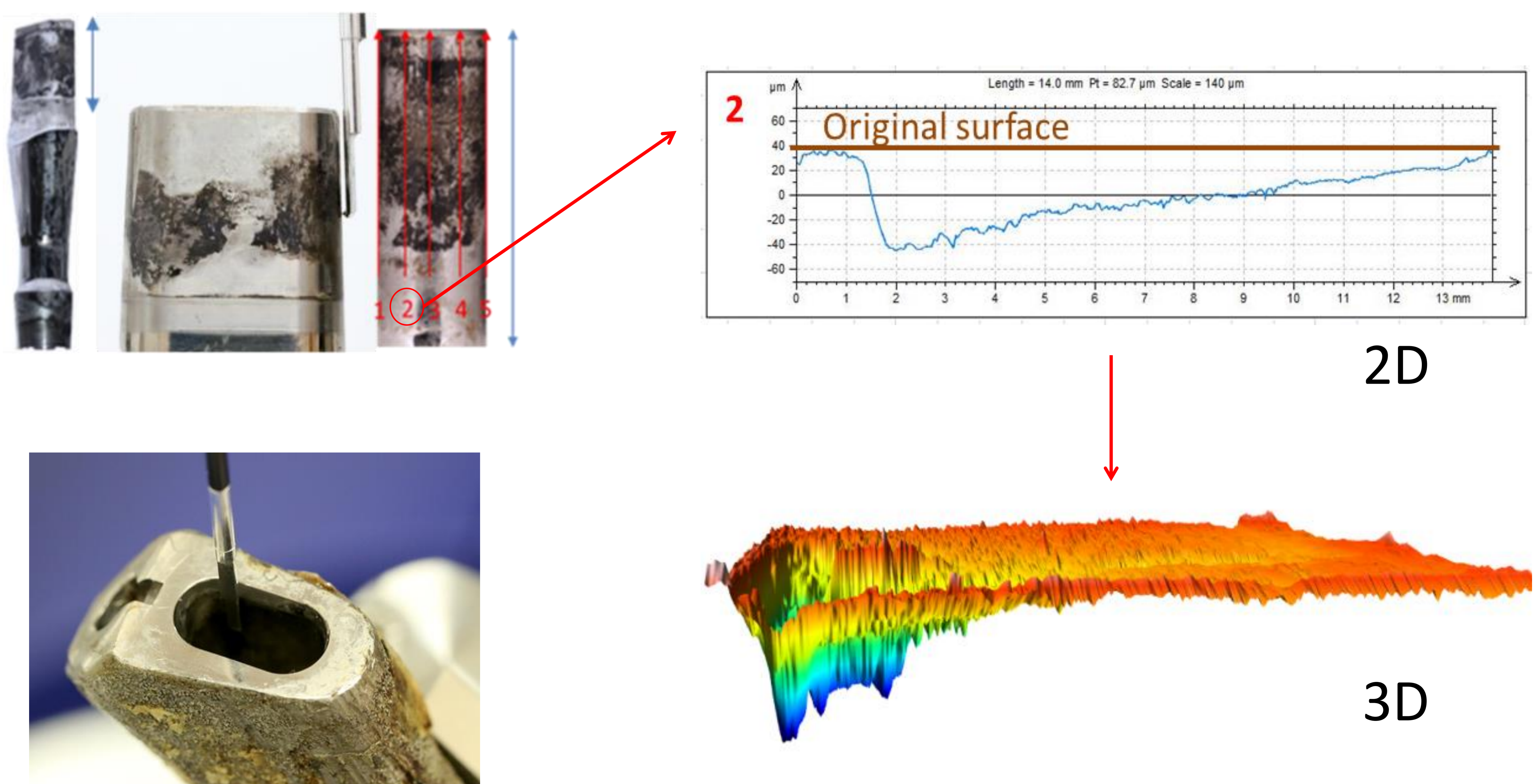


# Our Methods

Macroscopic inspection and light microscopy was performed to assess the severity of surface damage of each stem (both male and female parts) using a previously published scoring method [6].



A measurement method, using a roundness measuring machine was developed to quantify the severity of the damage on round ends of the tapers. With this method five longitudinal traces were taken on each round section of the taper surface to compute the relative depth of damage.

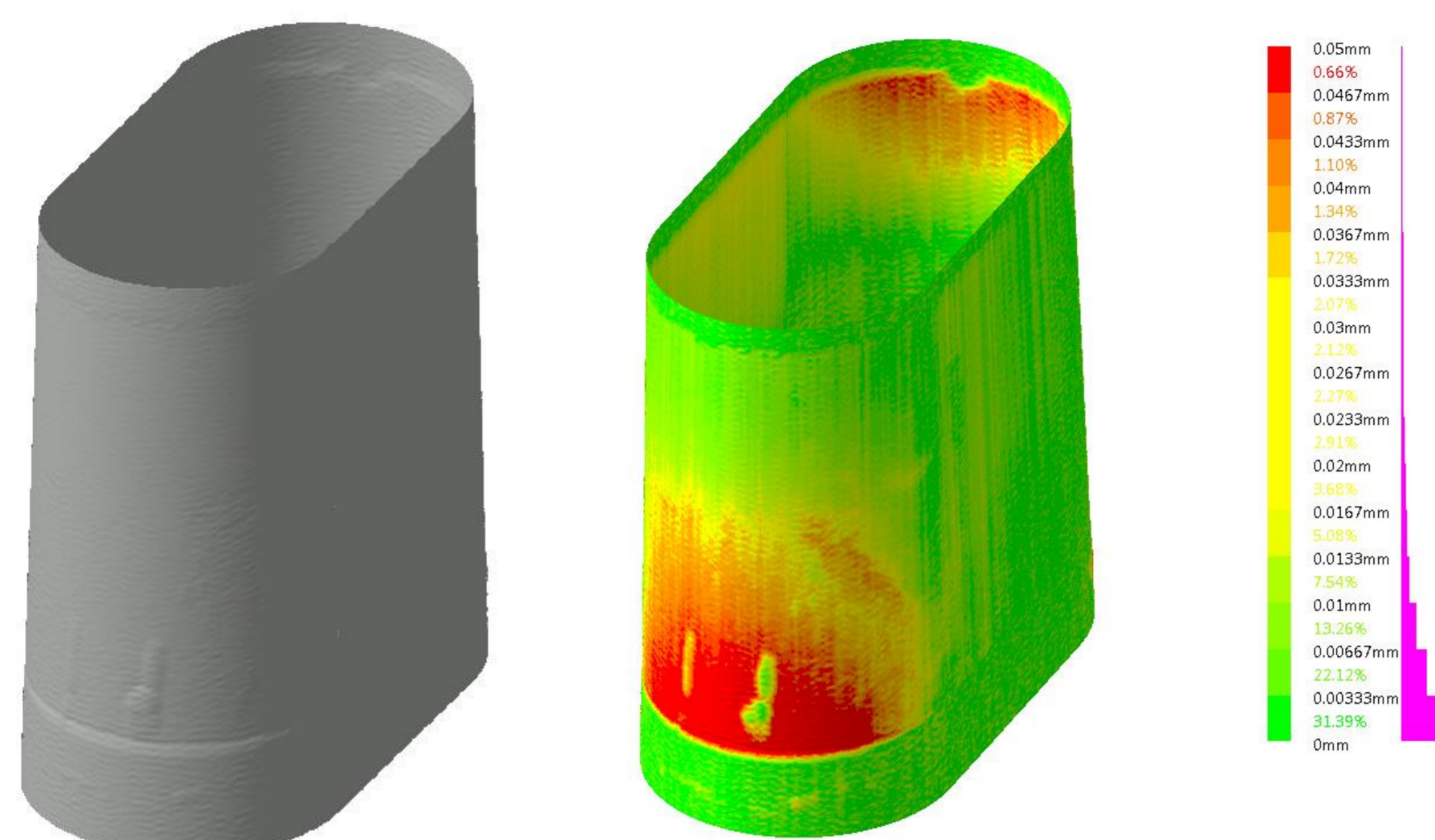


These traces were normalised relative to unaffected surface of the taper and a sectional wear area was computed. Average area of these five traces provided a measure of surface damage for comparative purposes. The result obtained was normalised with time in situ.

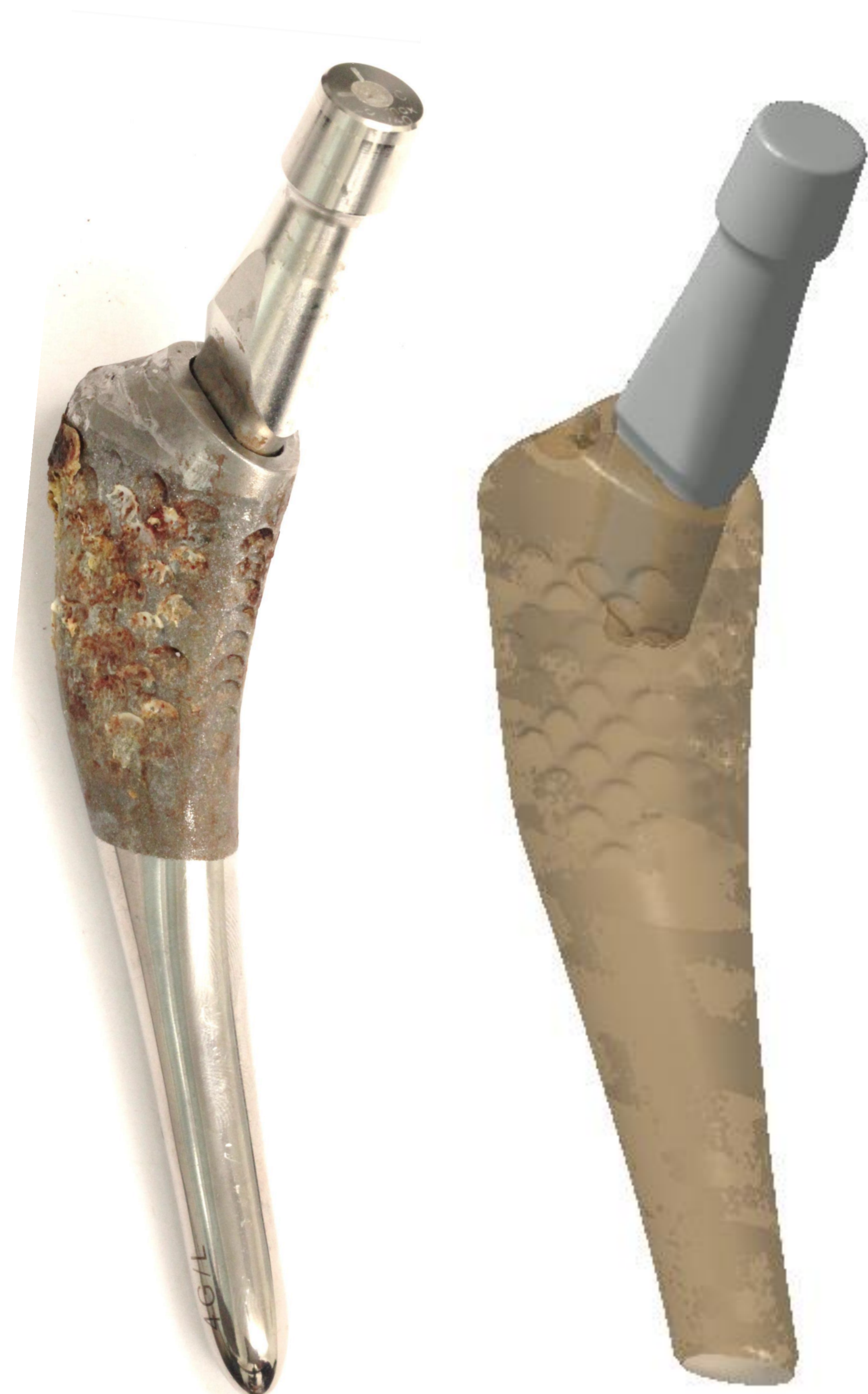


# Multi Scale Metrology Approach

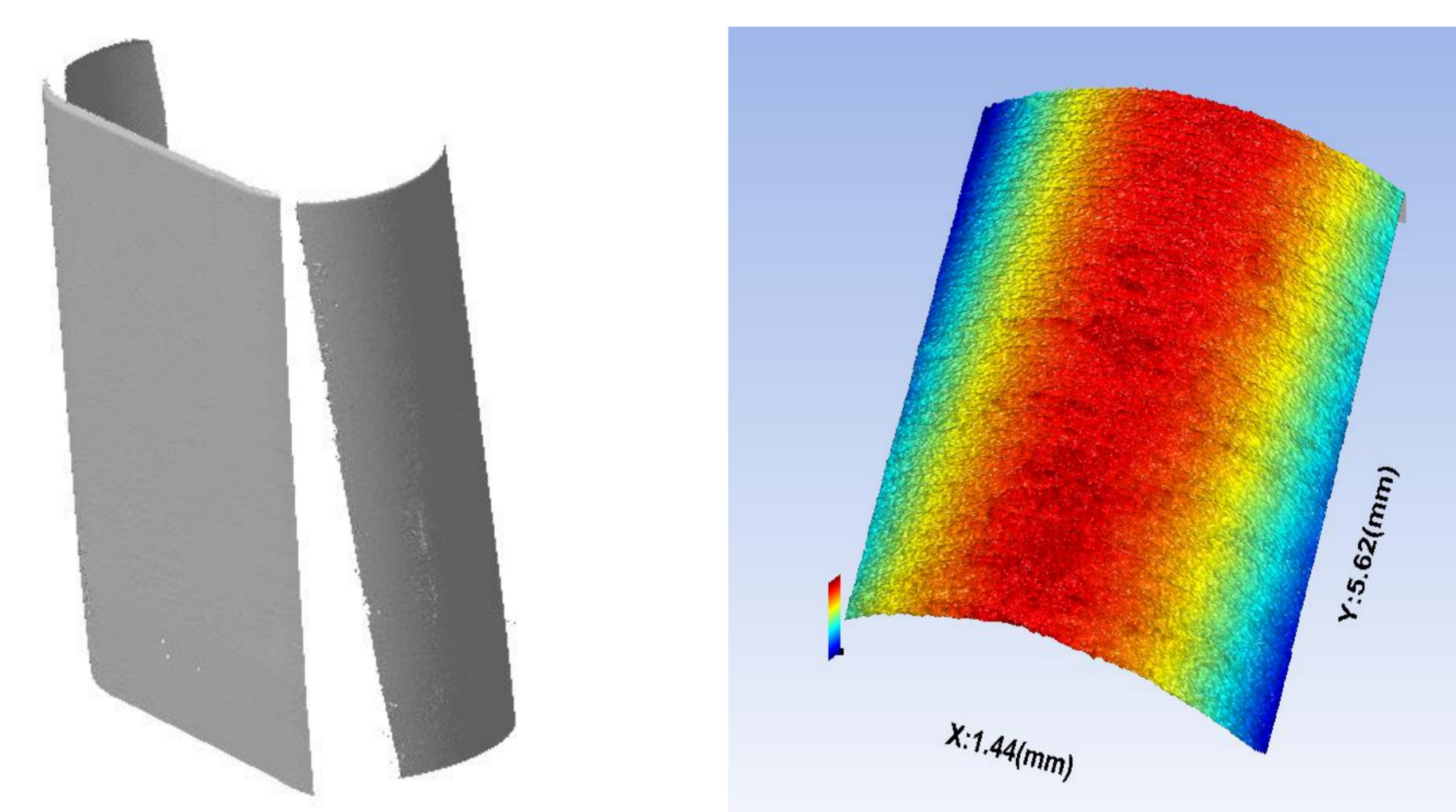
## Coordinate Measuring Machine



- 400 vertical scans at 0.05mm point spacing
- Reconstruction of original geometry based on iterative best fit algorithm and unworn sections
- Resolution enables estimation of overall material loss volume and linear penetration



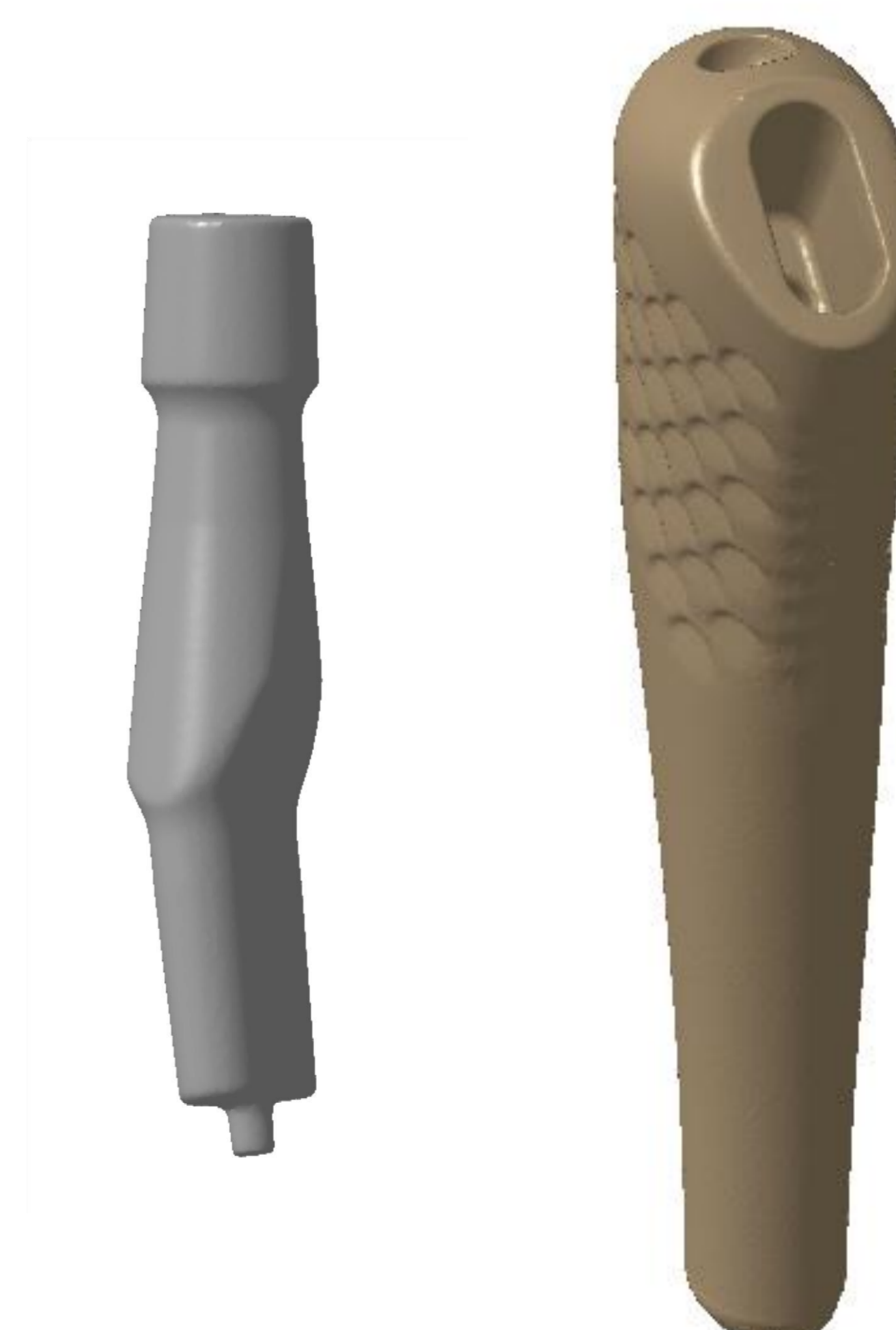
## Optical measurements



- Form, roughness measurements based on infinite focus variation
- Estimation of local material loss volume/linear penetration
- Ability to compute 2D/areal surface parameters to investigate changes in surface texture

## Computer Tomography - Industrial microCT

- 1500 slices to provide reconstruction of 3D model
- Reconstruct the virtual assembly between components
- Provides framework for data fusion of multi scale data from CMM and optical measurements

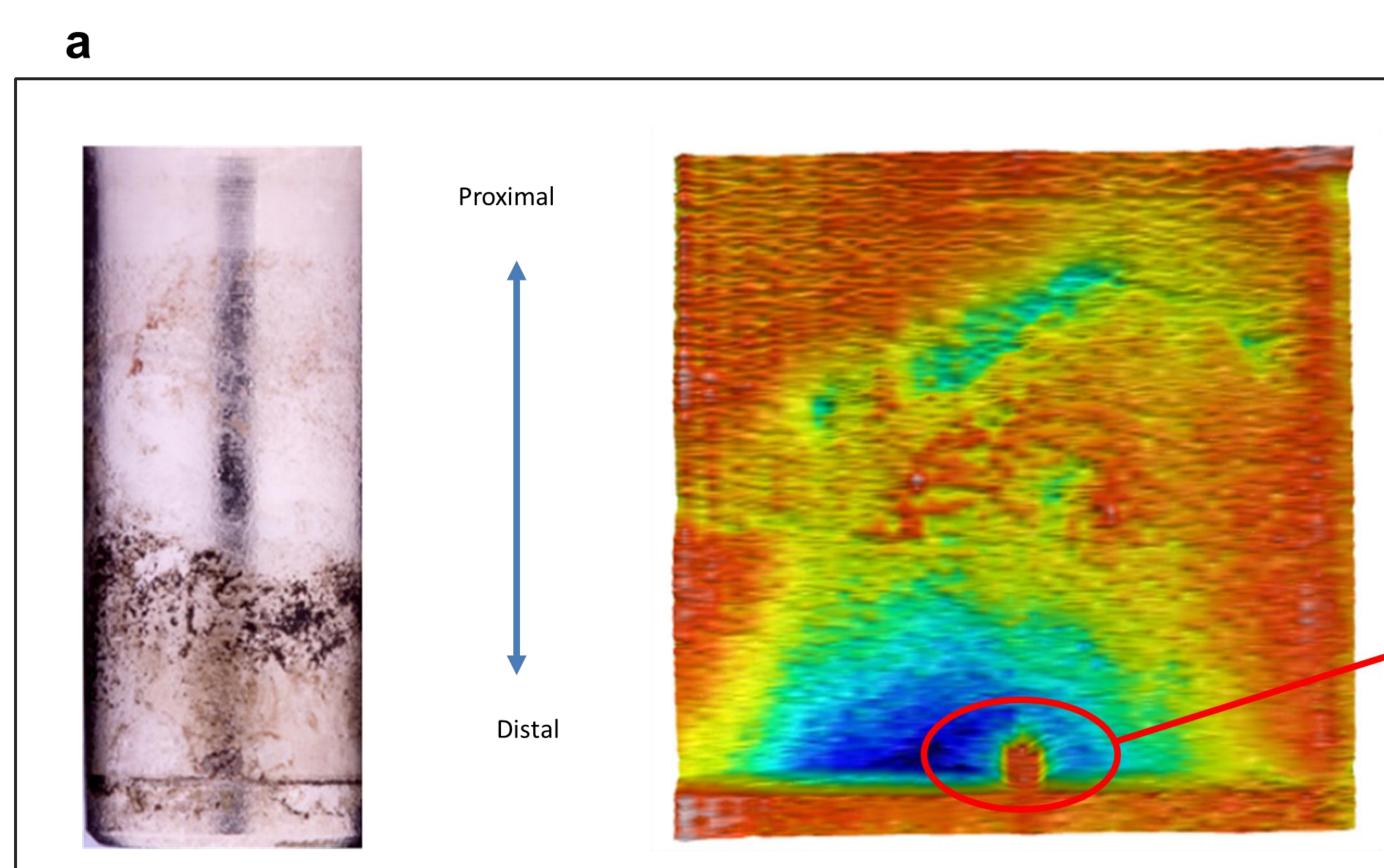




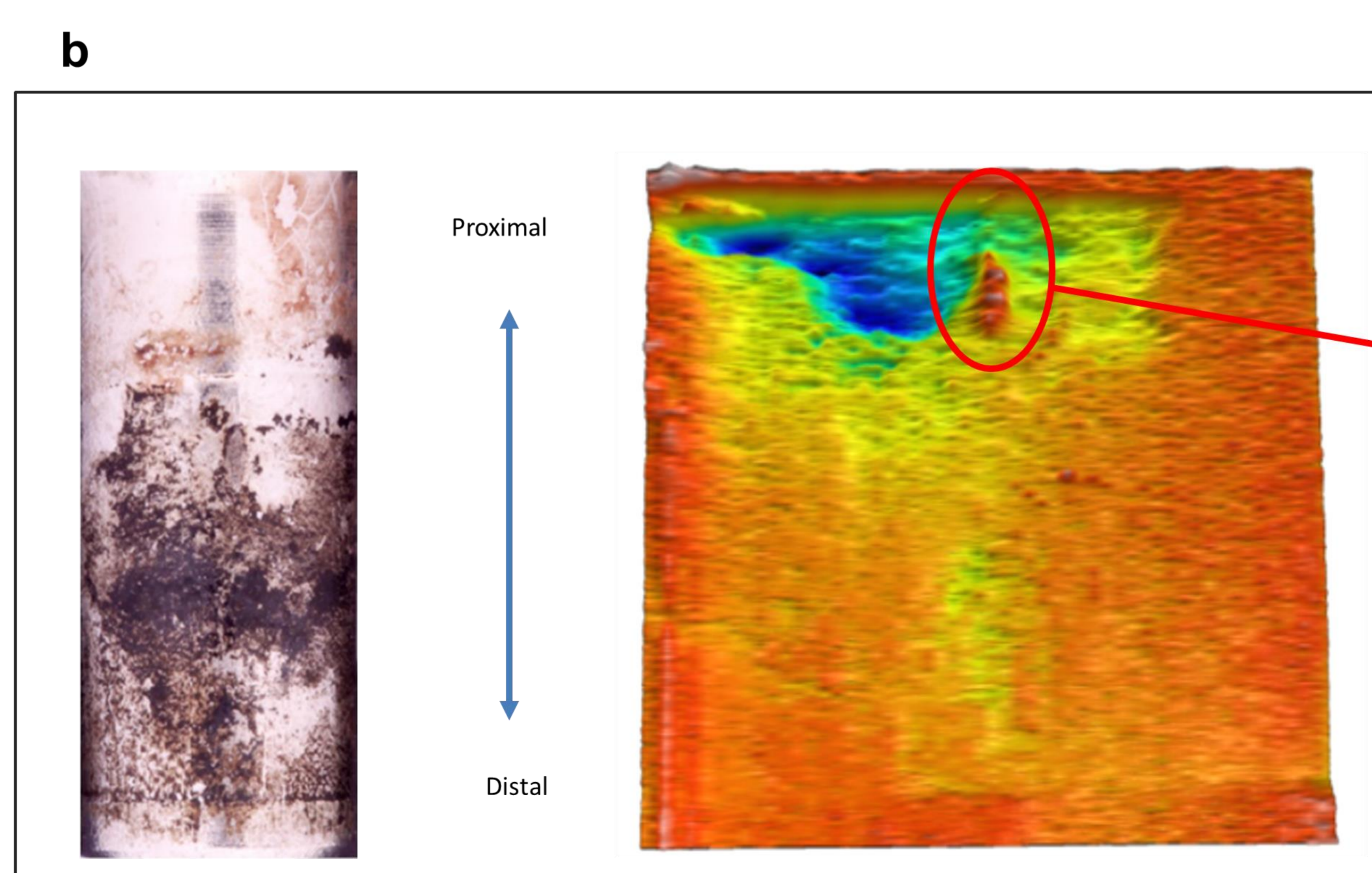
# What we See on the Neck



Deepest areas of damage were found on the inferior proximal and superior distal part of the neck, compatible with bending. Scanning Electron Microscopy with Energy Dispersive Spectroscopy revealed that the surface deposit was chromium orthophosphates indicative of corrosion processes and presence of metal transfer from the stem to the neck.



3-Dimensional map of the lateral round surface of the neck. Deepest area of damage in blue.



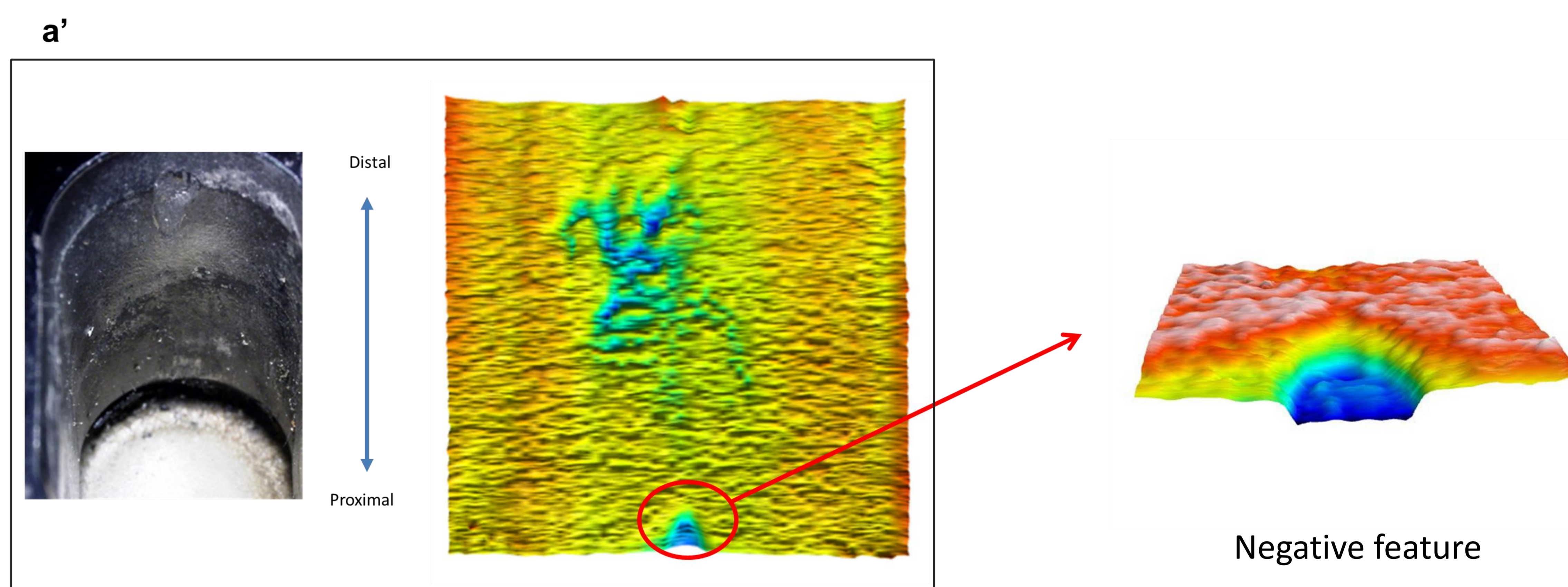
3-Dimensional map of the medial round surface of the neck. Deepest area of damage in blue.



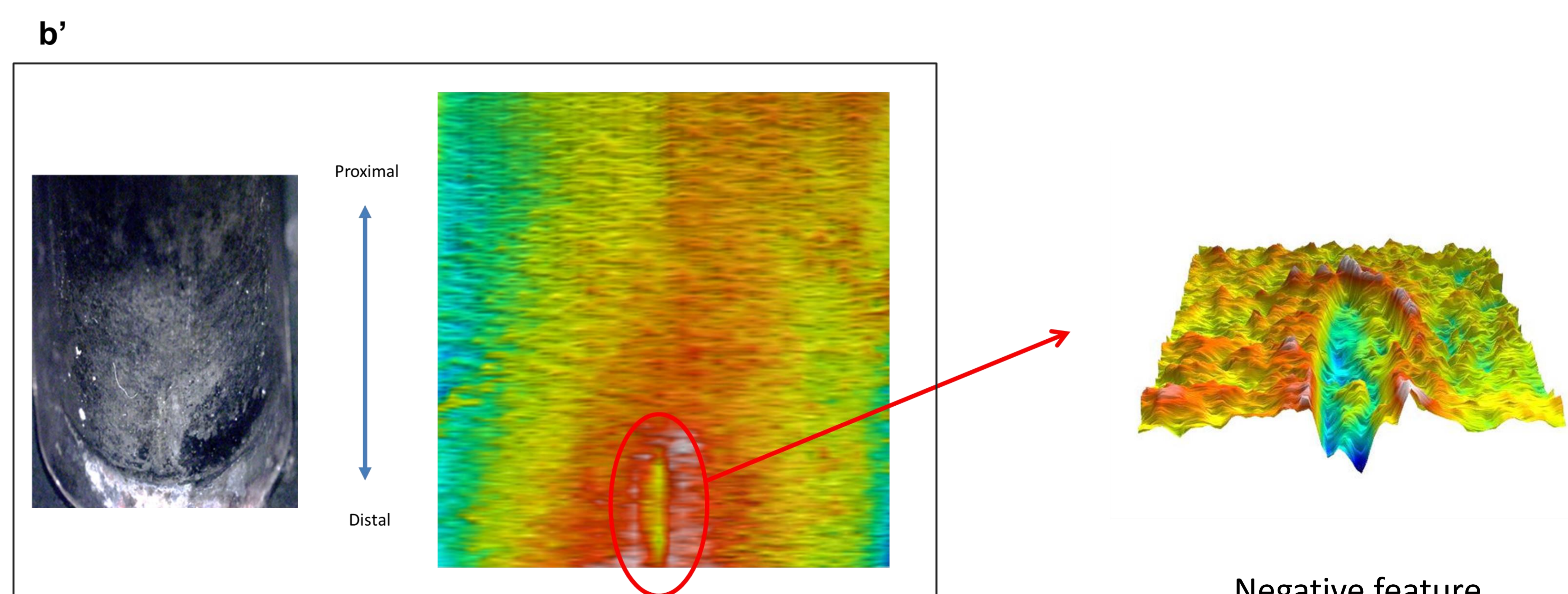
# What we See on the Stem



The symmetry of the patterns found on stem bore tapers confirms micromotion between the parts with subsequent material loss due to a cantilever bending effect which is sufficient to cause adverse tissue reactions.



3-Dimensional map of the lateral round surface of the of the stem bore taper. Deepest area of damage in blue.



3-Dimensional map of the medial round surface of the of the stem bore taper. Deepest area of damage in blue.



# Influencing Factors

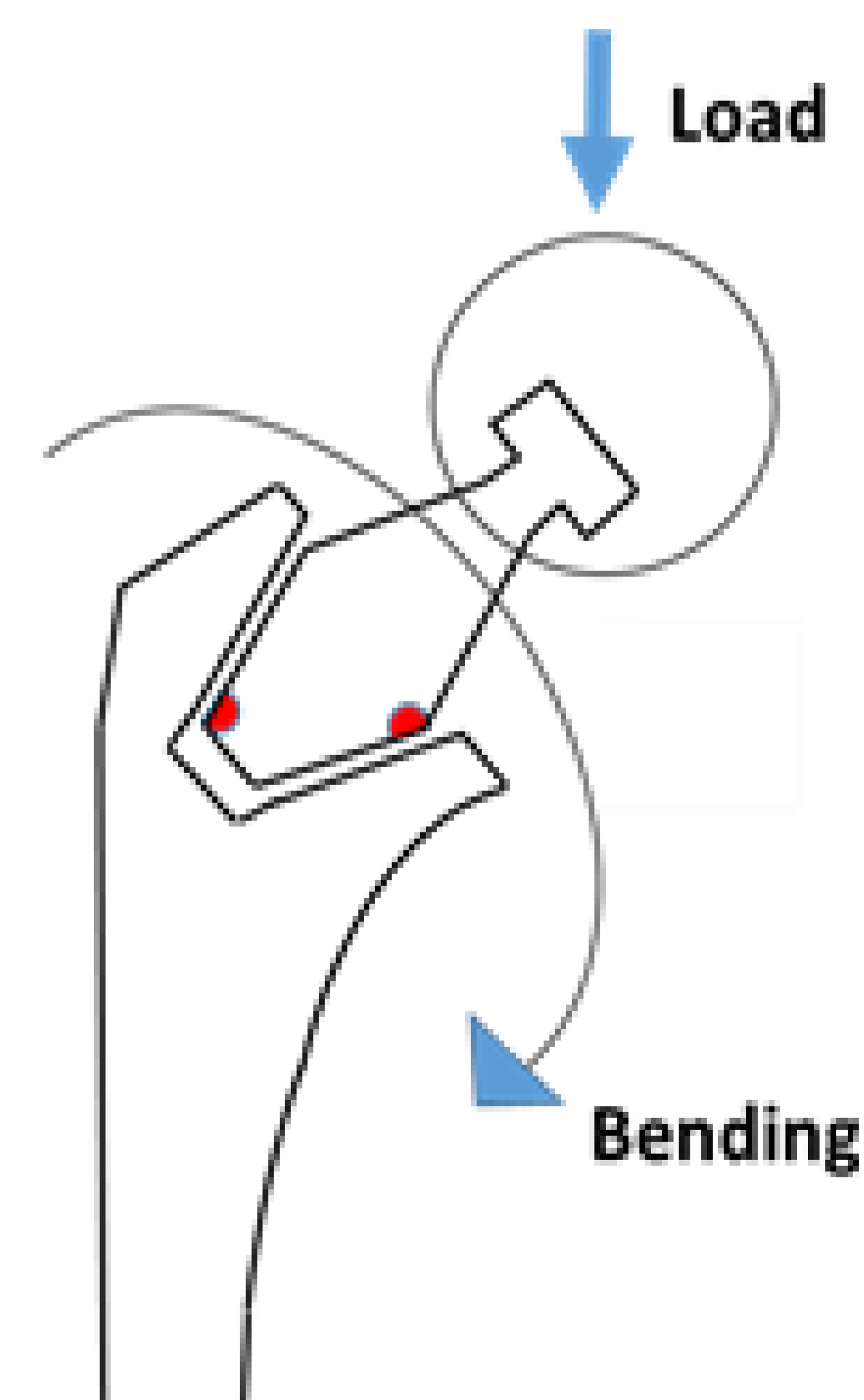
## Surgical

Surgeons should avoid long varus necks if opting for a dual-taper implant.



The mismatch of materials at the junction seems to avoid catastrophic breakage of the necks as reported with Ti-Ti junctions [7], however we see corrosion at the neck-stem junction in all the designs having CoCr necks and Ti stems.

## Implant



## Patient

The severity of surface damage appears to be associated with increasing patient BMI.

***The amount of damage seen on the taper associated with the stem, was severe in almost all cases examined.***

## References

1. Krishnan H, Krishnan SP, Blunn G, Skinner JA, Hart AJ. Modular neck femoral stems. Bone & Joint Journal. 2013 Aug 1;95(8):1011-21.2.
2. Wright G, Sporer S, Urban R, Jacobs J. Fracture of a modular femoral neck after total hip arthroplasty. The Journal of Bone & Joint Surgery. 2010 Jun 1;92(6):1518-21.
3. Nawabi DH, Do HT, Ruel A, Lurie B, Elpers ME, Wright T, Potter HG, Westrich GH. Comprehensive Analysis of a Recalled Modular Total Hip System and Recommendations for Management. J Bone Joint Surg Am. 2016 Jan 6;98(1):40-7.
4. Walsh CP, Hubbard JC, Nessler JP, Markel DC. Revision of Recalled Modular Neck Rejuvenate and ABG Femoral Implants. The Journal of arthroplasty. 2015 May 31;30(5):822-6.
5. De Martino I, Assini JB, Elpers ME, Wright TM, Westrich GH. Corrosion and Fretting of a Modular Hip System: A Retrieval Analysis of 60 Rejuvenate Stems. The Journal of arthroplasty. 2015 Aug 31;30(8):1470-5.
6. Goldberg JR, Gilbert JL, Jacobs JJ, Bauer TW, Paprosky W, Leurgans S. A multicenter retrieval study of the taper interfaces of modular hip prostheses. Clinical orthopaedics and related research. 2002 Aug 1;401:149-61.
7. Ellman MB, Levine BR. Fracture of the modular femoral neck component in total hip arthroplasty. The Journal of arthroplasty. 2013 Jan 31;28(1):196-e1.