



University of HUDDERSFIELD

University of Huddersfield Repository

Barber, Claire

'One to Twenty' at Make, Create, Cultivate symposium

Original Citation

Barber, Claire (2014) 'One to Twenty' at Make, Create, Cultivate symposium. In: Make, Create and Cultivate, 12th July 2014, Somerset College, UK. (Unpublished)

This version is available at <http://eprints.hud.ac.uk/id/eprint/23662/>

The University Repository is a digital collection of the research output of the University, available on Open Access. Copyright and Moral Rights for the items on this site are retained by the individual author and/or other copyright owners. Users may access full items free of charge; copies of full text items generally can be reproduced, displayed or performed and given to third parties in any format or medium for personal research or study, educational or not-for-profit purposes without prior permission or charge, provided:

- The authors, title and full bibliographic details is credited in any copy;
- A hyperlink and/or URL is included for the original metadata page; and
- The content is not changed in any way.

For more information, including our policy and submission procedure, please contact the Repository Team at: E.mailbox@hud.ac.uk.

<http://eprints.hud.ac.uk/>

One to Twenty

Claire Barber and Steve Swindells



Reflections on a pair of gloves



Cont.

2001. 157. 62. 1/2	white gloves	move to B
2001. 157. 68. 1/2	"	move to box
2001. 157. 66. 1/2	"	move to B
2006. 51. 1/2	"	move to box
2006. 277. 1/2	"	"
1996. 49. 1/2	"	"

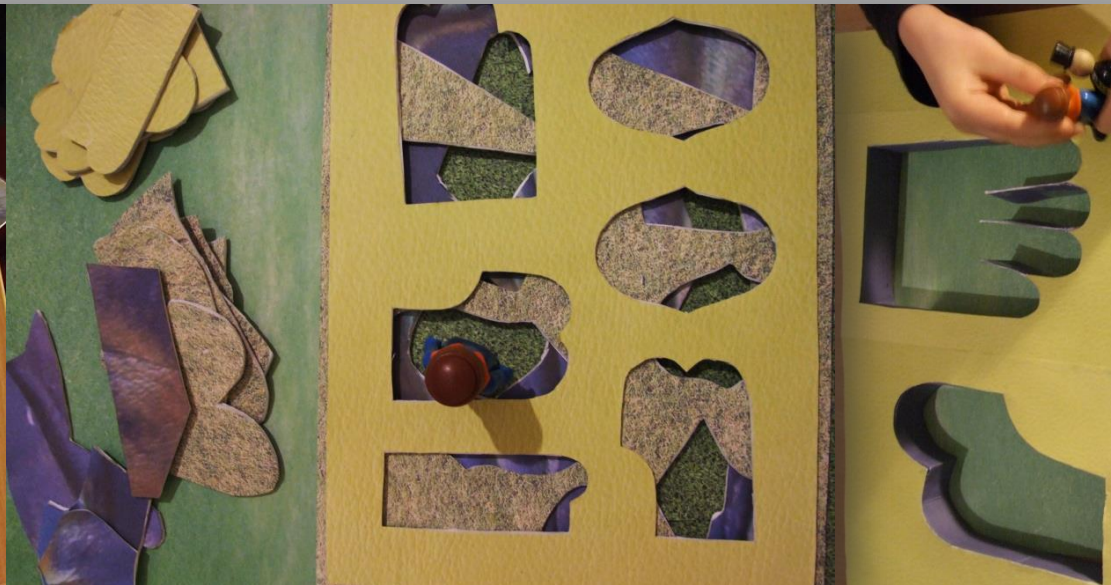
Crafting Collaboration



Collaboration: Southcombe Brothers



Collaboration: Local business



Collaboration: Yeovil Glove Archive



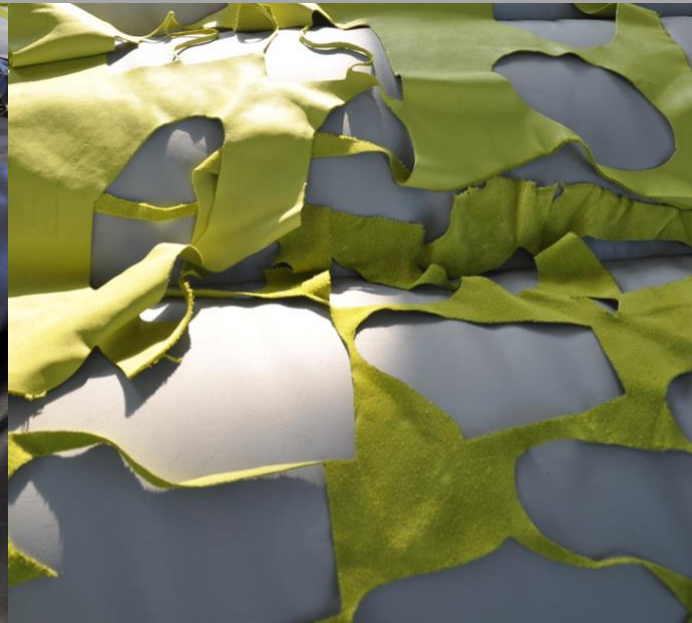
Archival Interventions



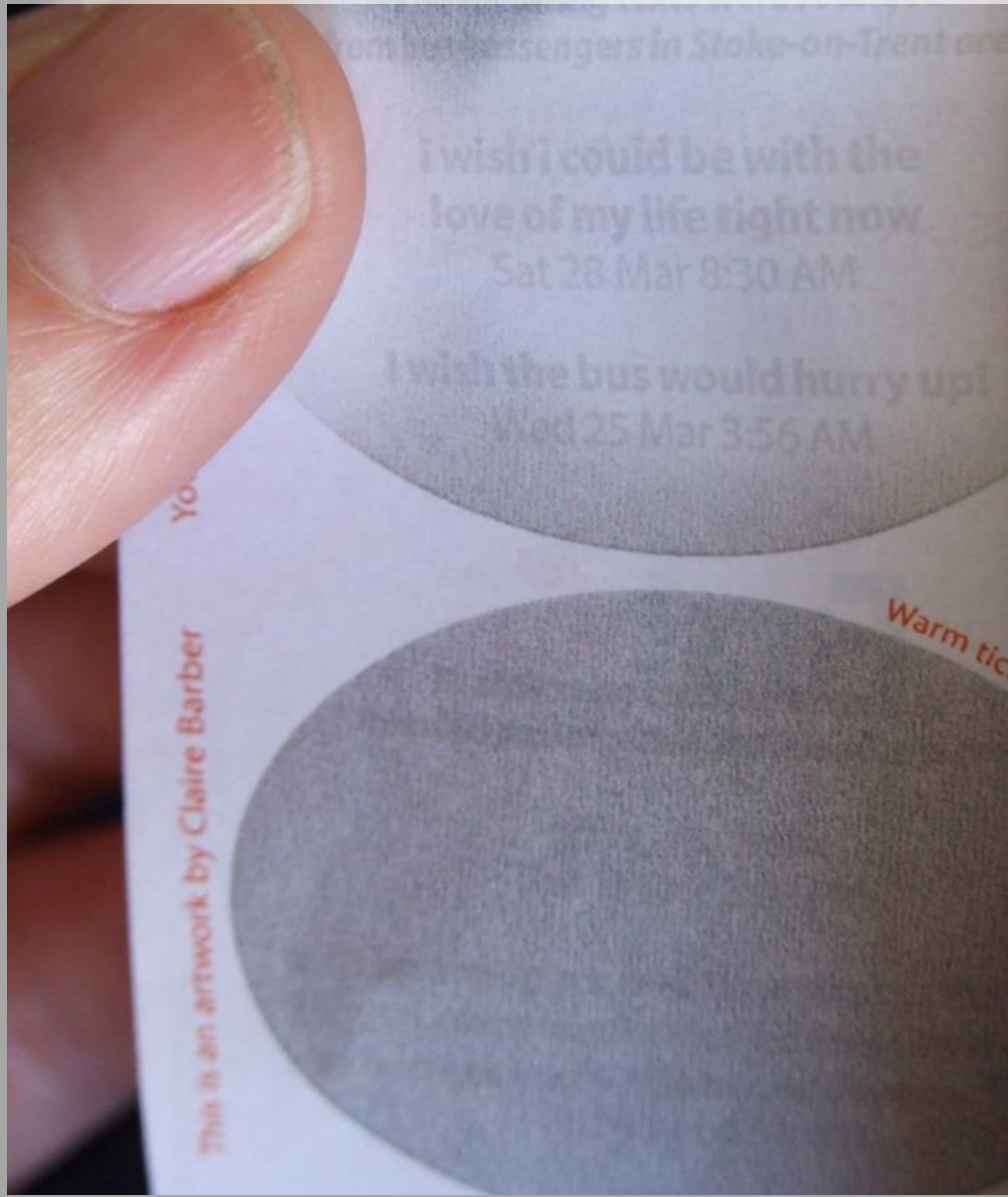
Archival Interventions



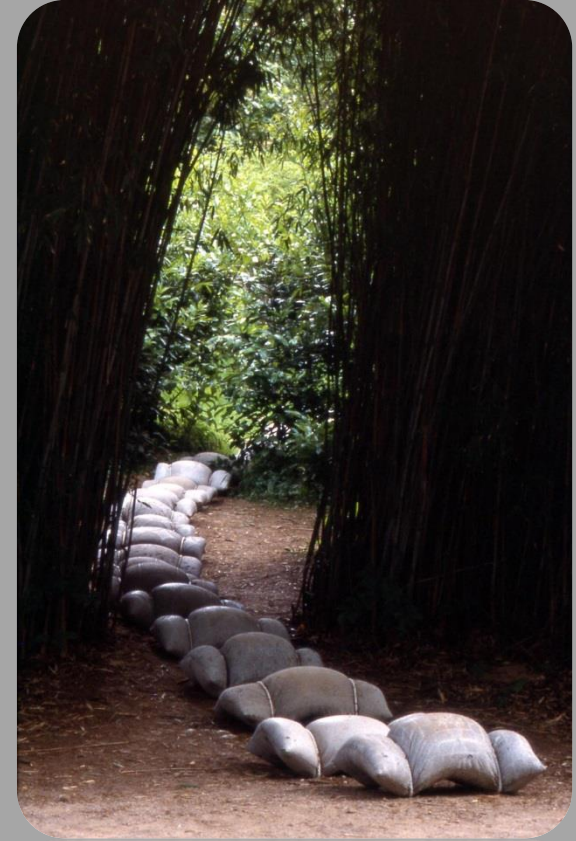
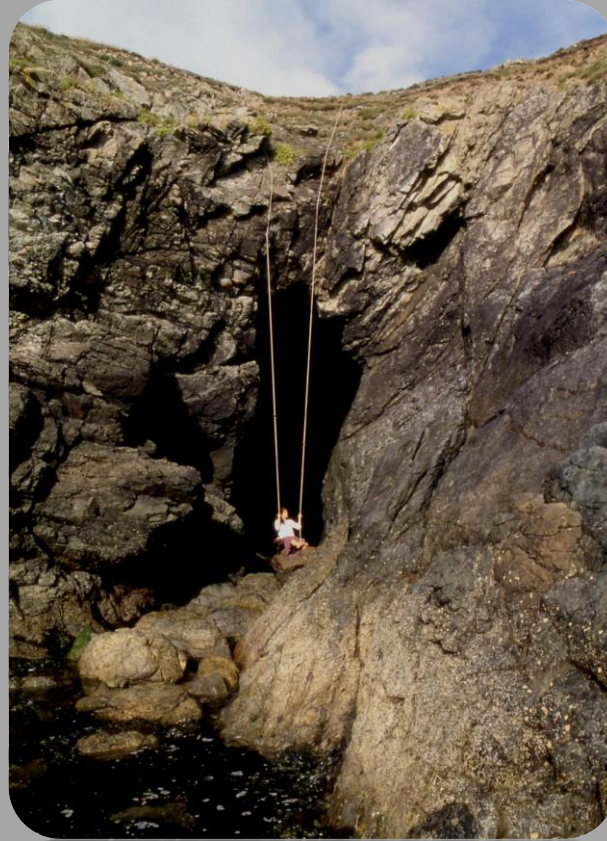
Flexible possibilities of a Firemaster glove



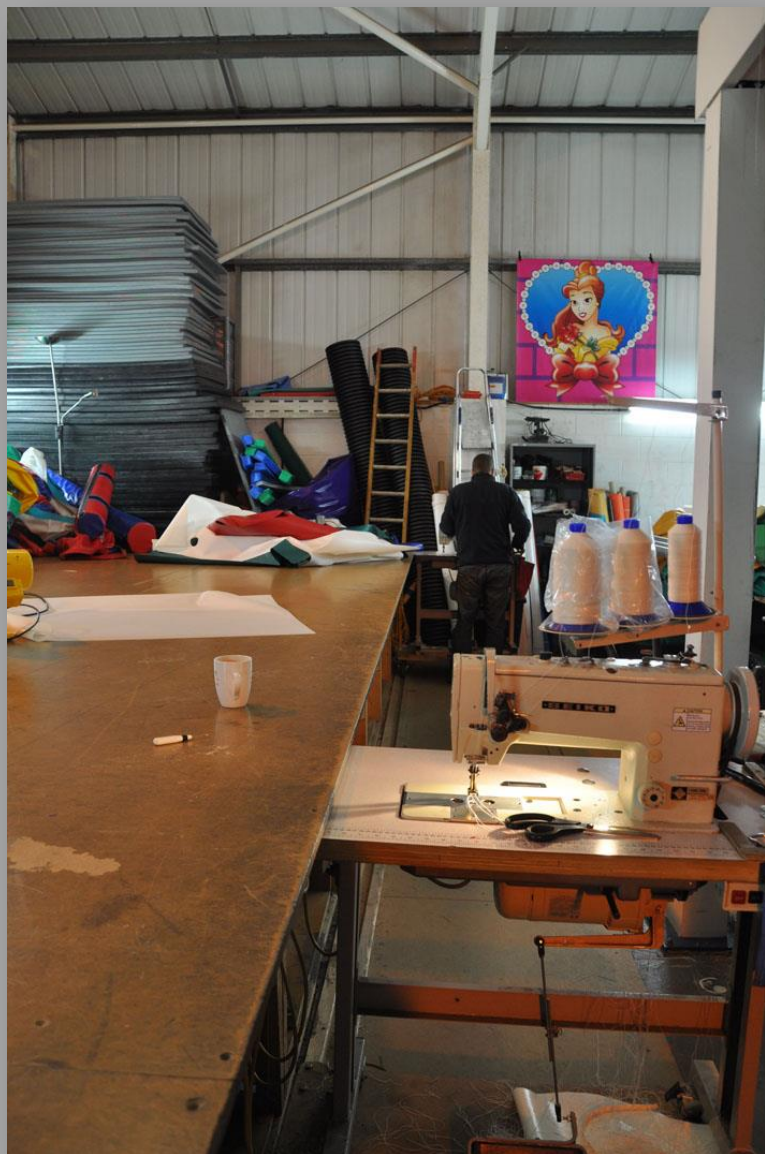
Reflections on Touch



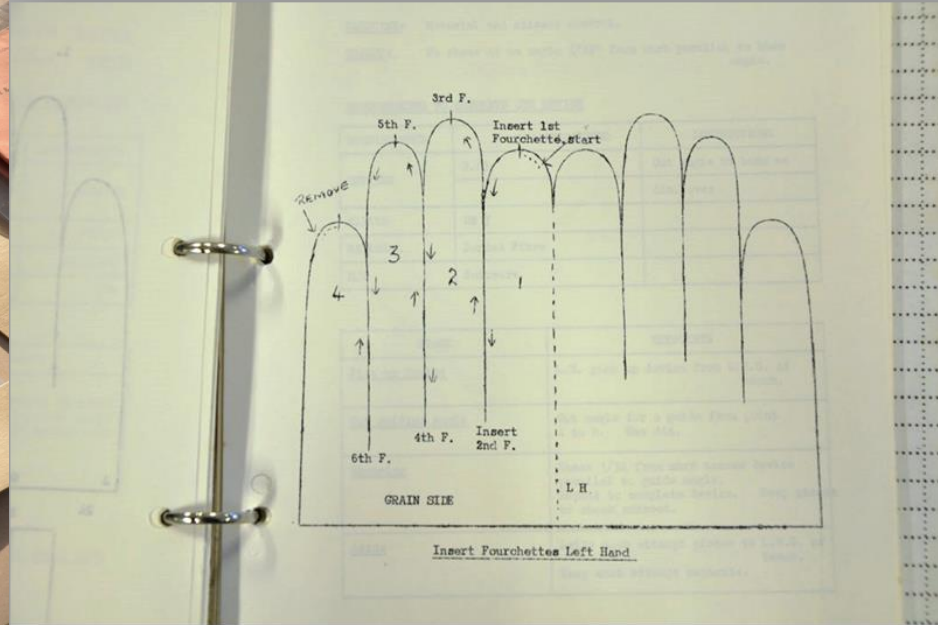
Reflections on Stepping Lightly



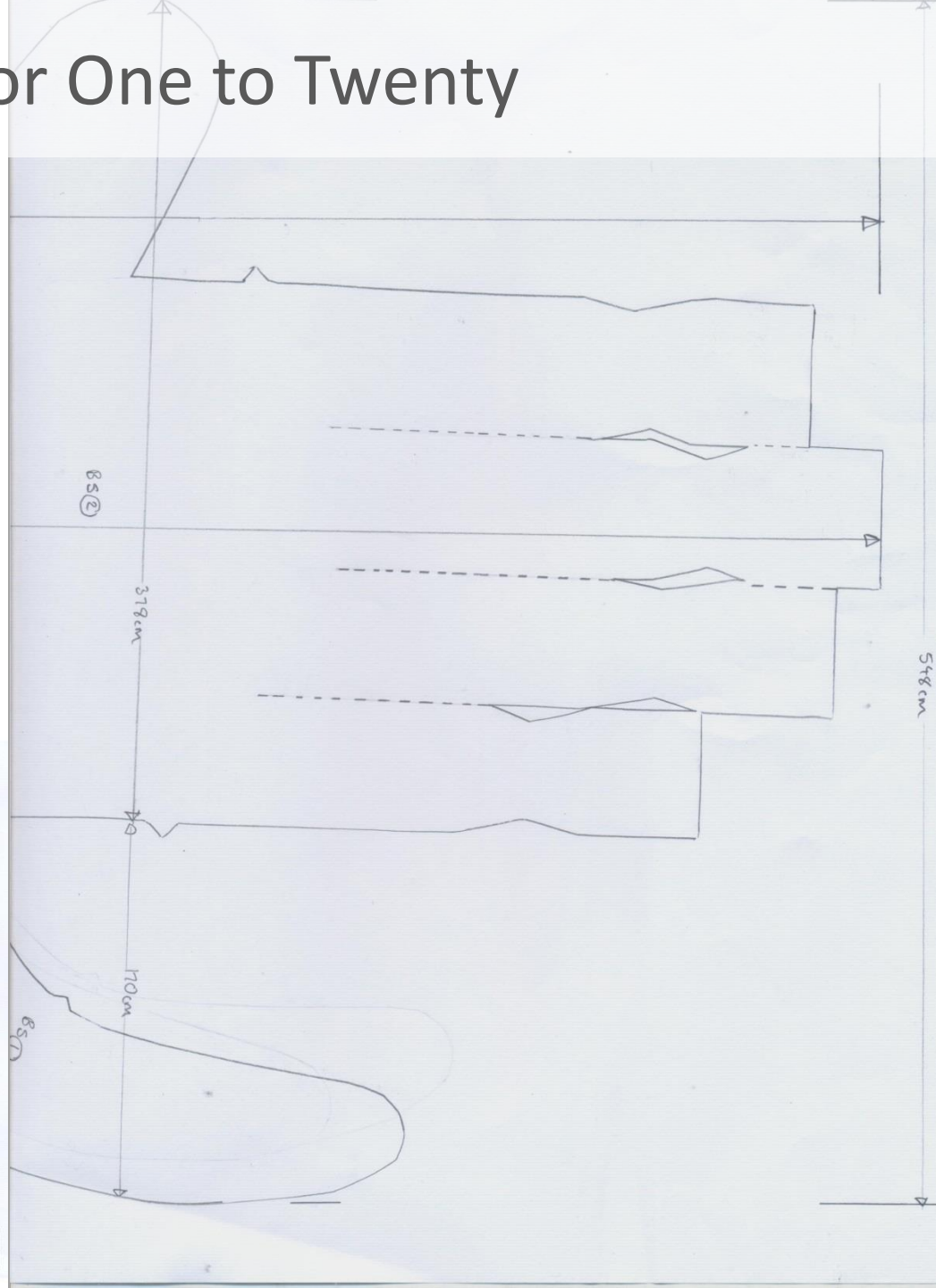
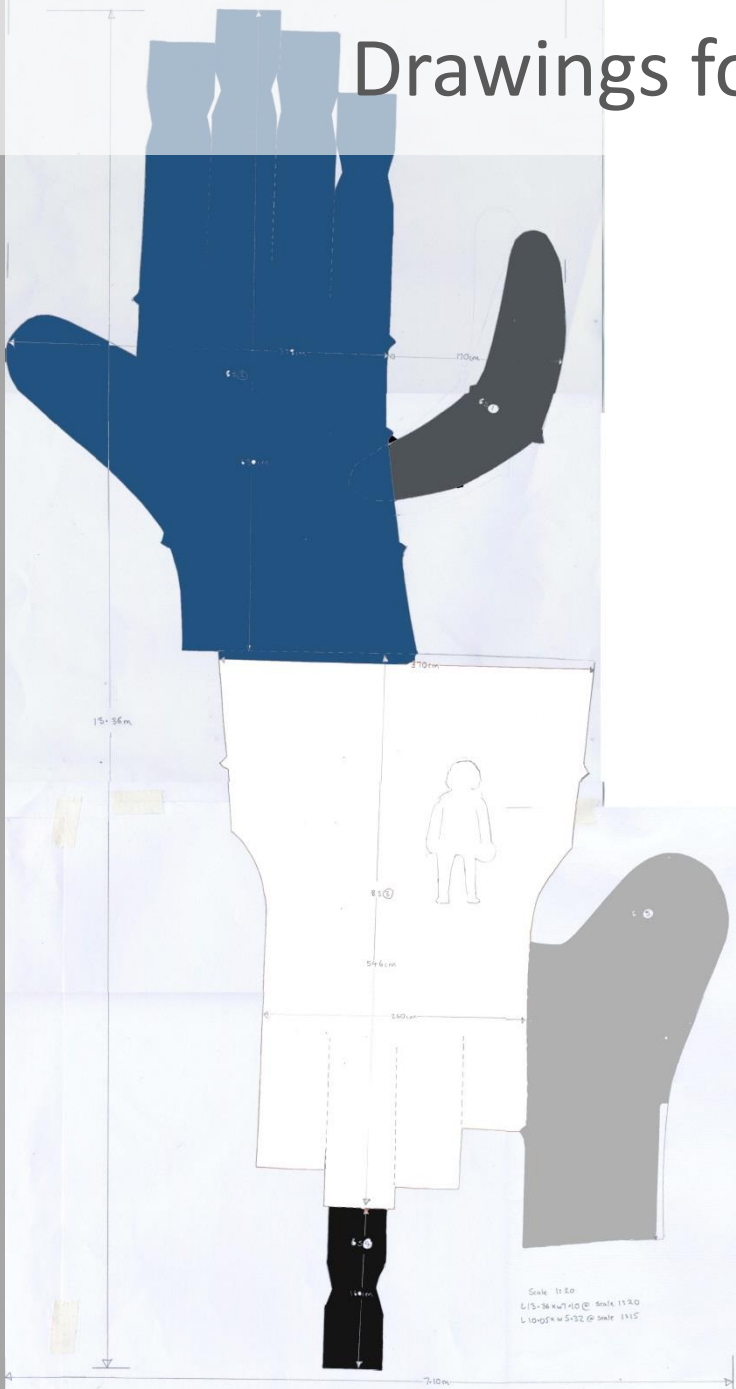
Two businesses working with traditional craft skills



Technical drawings from the Yeovil Glove Archive



Drawings for One to Twenty



One to Twenty



One to Twenty



Collaboration: Heritage and Industry



Acknowledgements

- Somerset Art Works (SAW)
- Yeovil Glove Archive
- Southcombe Brothers Ltd
- KLC Castles
- Pittards plc
- The Glove Factory
- Independent curator - Karen Gaskill

With particular thanks to Zoe Li for all her efforts, encouragement and assistance in making our project possible

