



# University of HUDDERSFIELD

## University of Huddersfield Repository

Newman, Christopher D, Sturdy, Paula, Wilson, David and Thorne, Richard

Identifying Enterprise Opportunities: A Case Study. FormWatch: Web Analytics & Business Intelligence.

### Original Citation

Newman, Christopher D, Sturdy, Paula, Wilson, David and Thorne, Richard (2010) Identifying Enterprise Opportunities: A Case Study. FormWatch: Web Analytics & Business Intelligence. In: Teaching and Learning Conference 2010: Connect 2. Teaching, Learning, Research, Enterprise, 13 September 2010, University of Huddersfield.

This version is available at <http://eprints.hud.ac.uk/id/eprint/10150/>

The University Repository is a digital collection of the research output of the University, available on Open Access. Copyright and Moral Rights for the items on this site are retained by the individual author and/or other copyright owners. Users may access full items free of charge; copies of full text items generally can be reproduced, displayed or performed and given to third parties in any format or medium for personal research or study, educational or not-for-profit purposes without prior permission or charge, provided:

- The authors, title and full bibliographic details is credited in any copy;
- A hyperlink and/or URL is included for the original metadata page; and
- The content is not changed in any way.

For more information, including our policy and submission procedure, please contact the Repository Team at: [E.mailbox@hud.ac.uk](mailto:E.mailbox@hud.ac.uk).

<http://eprints.hud.ac.uk/>

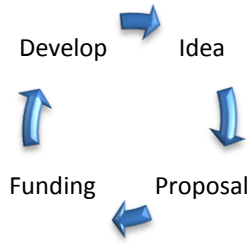
# IDENTIFYING ENTERPRISE OPPORTUNITIES: A CASE STUDY

## FORMWATCH: WEB ANALYTICS & BUSINESS INTELLIGENCE

Christopher Newman, Paula Sturdy, David Wilson & Richard Thorne (graduate)

### INTRODUCTION

Enterprise projects have a natural lifecycle; from idea to development.



Enterprise-aware tutors could identify projects to be placed on a "Commercial Possibility" watch list.

The flow chart depicts such a case: identifying a project and showing how it was developed.

### THE FORMWATCH PROJECT

This application automatically monitors and records how online forms are used.

It produces statistics about the user's behaviour whilst

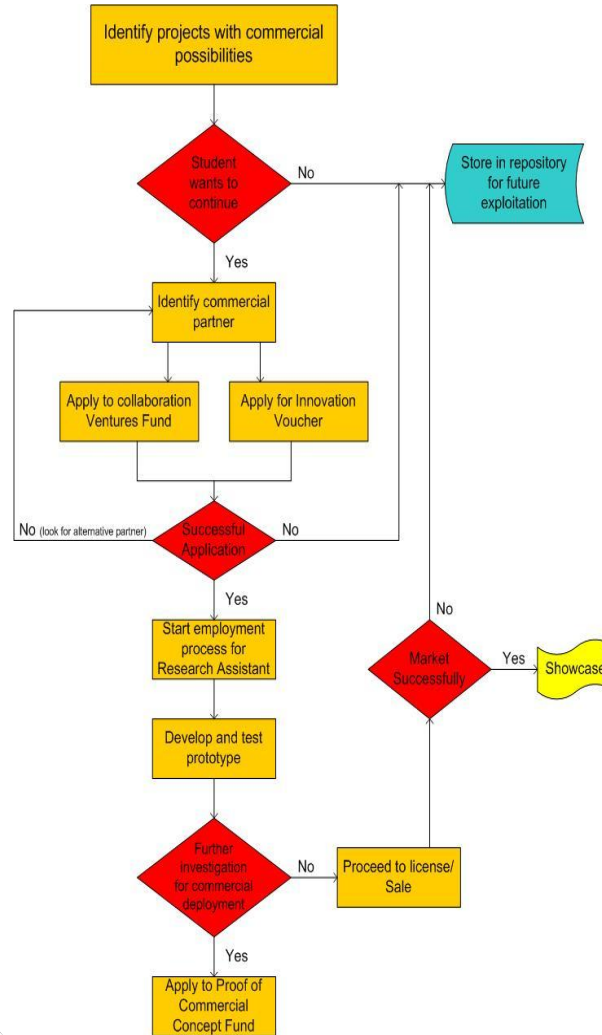
completing the form.

These can provide valuable

intelligence

on how visitors interact with such a form.

The website owner can then change the form to help understanding and even improve user interactivity.



### RESULTS SO FAR

- Development of prototype software to beta stage
- Employment of student by ghd, Leeds as a result of the project
- Collaboration with industrial partner
- Set of recommendations devised from the experience that could inform similar ventures
- Management summary report detailing the process inception phase of developing a commercial venture (available on request)



### FUTURE WORK

- Beta testing of the application in alternative commercial settings
- Full analysis of the usage test results
- Initiate the formation of a dedicated software engineering facility
- Identify further funding streams
- Journal publication (Enterprise in Education)
- Initiate a University Enterprise Group - nurture, network and nourish (fund) enterprise-active staff